

SHOWCASE HOME | DAHLIA

Street Address: 5359 SW Pomegranate Way

A/C Sq. Ft.: 4172

Bedrooms: 4

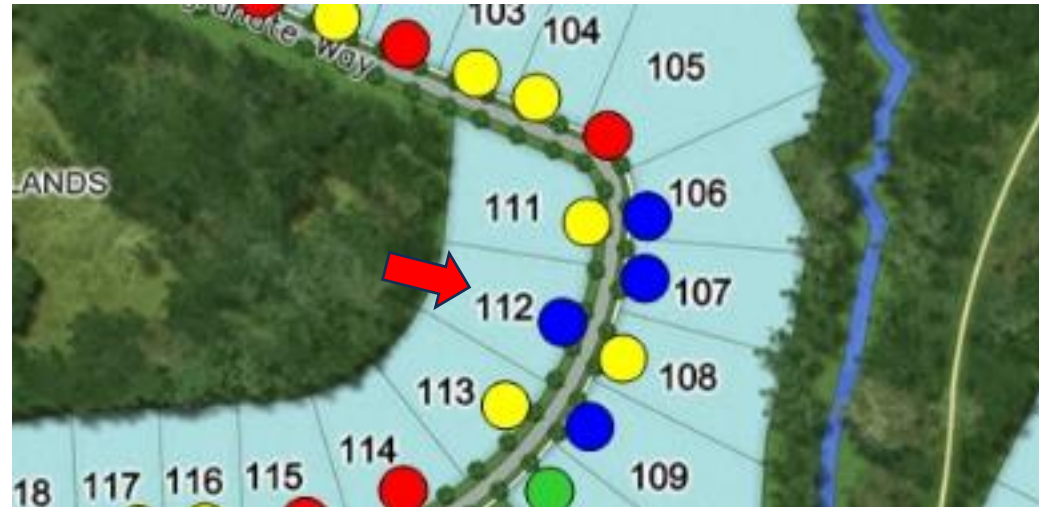
Bathrooms: 4 1/2

Move-In Date: April 2024

CANOPY CREEK



ELEVATION: F



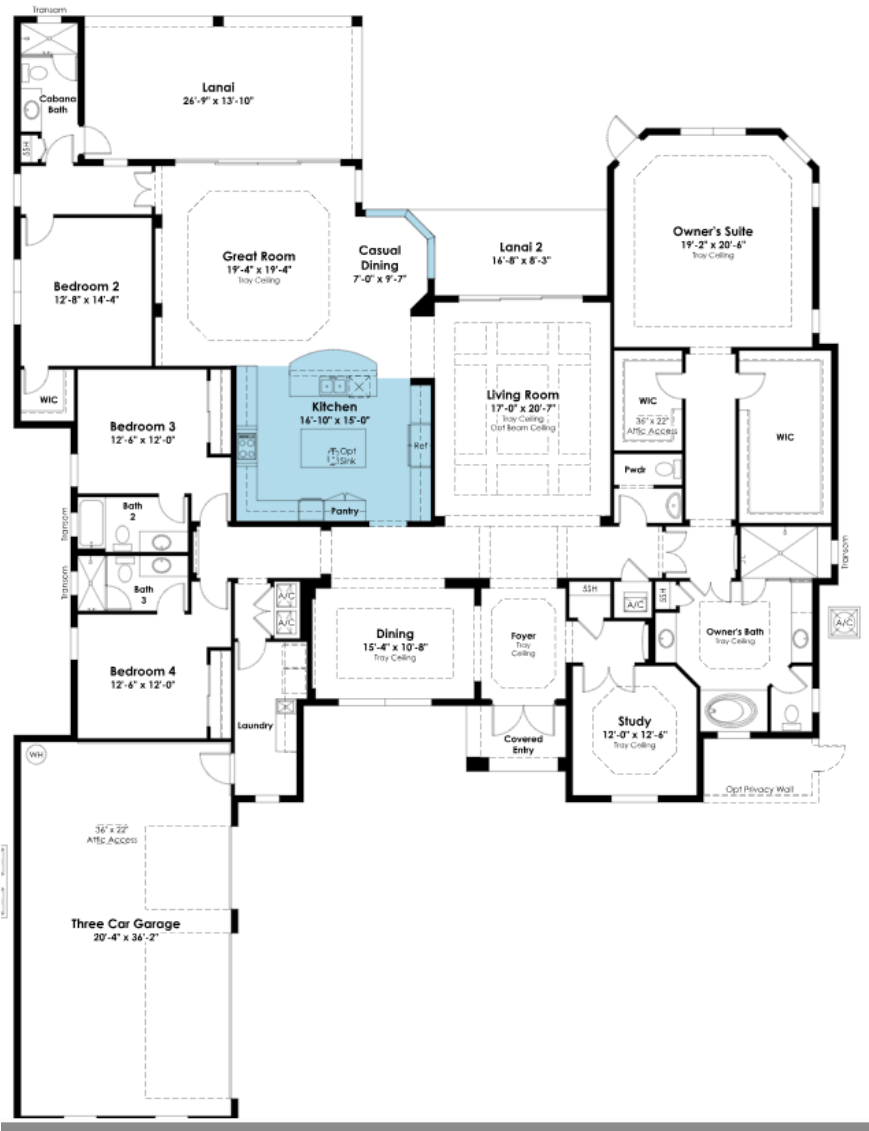
HOMESITE: 112

Canopy Creek | 12345 Main Street, Community Town, FL, 12345



©2022. Prices, homesites, amenities, home designs, square footage and other information subject to errors, changes, omissions, deletions, availability, prior sales and withdrawal at any time without notice. Square footage numbers are approximate and may vary depending on the standard measurement used. Photos and/or drawings of homes may show upgraded landscaping and may not represent the lowest priced homes in the community. All renderings and floorplans in these materials are an artist's conceptual drawings and will vary from the actual plans and homes as built. CGC1509406

KOLTERHOMES®



SHOWCASE HOME FLOORPLAN

THE DAHLIA

Canopy Creek | 12345 Main Street, Community Town, FL, 12345



©2022. Prices, homesites, amenities, home designs, square footage and other information subject to errors, changes, omissions, deletions, availability, prior sales and withdrawal at any time without notice. Square footage numbers are approximate and may vary depending on the standard measurement used. Photos and/or drawings of homes may show upgraded landscaping and may not represent the lowest priced homes in the community. All renderings and floorplans in these materials are an artist's conceptual drawings and will vary from the actual plans and homes as built. CGC1509406

KOLTERHOMES®

SHOWCASE HOME FEATURE HIGHLIGHTS

KITCHEN DETAILS

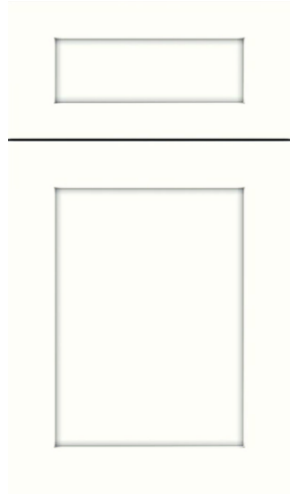
- CABINET CROWN MOLDING
- SECOND TIER CABINETRY
- DOUBLE ISLAND
- 3" ISLAND EDGE
- DOUBLE TRASH PULLOUT
- MONOGRAM BUILT IN APPLIANCES
- CABINET PANEL PACKAGE
- UNDER CABINET LIGHTING
- FARMHOUSE SINK

DESIGNER FEATURES

- GOURMET KITCHEN
- FREE STANDING TUB IN OWNERS
- BUTT GLASS IN CASUAL DINING
- 3 CAR SIDE LOAD GARAGE
- SOLID CORE DOORS
- HARDWOODS THROUGH OUT



SHOWCASE HOME DESIGNER FEATURES | KITCHEN



**PERIMETER CABINETS
SALEM WHITECAP**



**ISLAND CABINETS
SALEM BLACK**



HARDWARE 625-160SBZ



**MOEN STO
GOLD**



**COUNTERTOPS & BACKSPLASH
CAMBRIA IVERNESS FROST**



**TREFFOR
PUMICE OAK**

SHOWCASE HOME DESIGNER FEATURES | OWNERS BATH



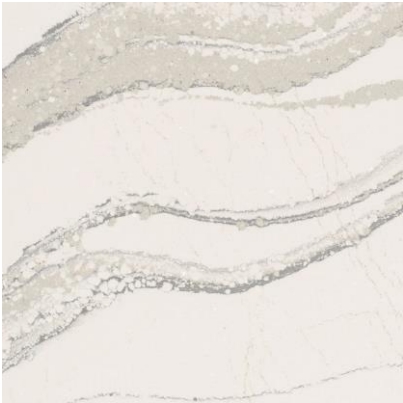
**CABINETS
SALEM STARLESS**



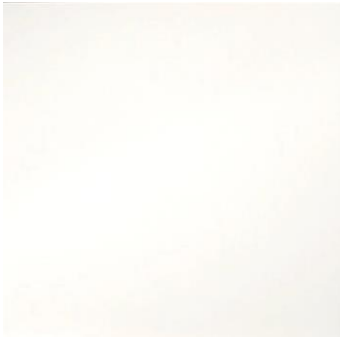
HARDWARE 625-160SN



**MOEN ALIGN
BRUSHED NICKEL**



**COUNTERTOPS
BRITTANICA**



**BATHROOM FLOOR
TIMES SQUARE WHITE
POLISHED 24X24**



**SHOWER WALL
KUDOS PERLA POLISHED 12X24**



**SHOWER FLOOR
WINTER FROST 2X2 MO**

Canopy Creek | 12345 Main Street, Community Town, FL, 12345



©2022. Prices, homesites, amenities, home designs, square footage and other information subject to errors, changes, omissions, deletions, availability, prior sales and withdrawal at any time without notice. Square footage numbers are approximate and may vary depending on the standard measurement used. Photos and/or drawings of homes may show upgraded landscaping and may not represent the lowest priced homes in the community. All renderings and floorplans in these materials are an artist's conceptual drawings and will vary from the actual plans and homes as built. CGC1509406

KOLTERHOMES®

SHOWCASE HOME DESIGNER FEATURES | BATH 2



**CABINETS
TAMARIND WHITE CAP**



HARDWARE 625-160SN



**MOEN ALIGN
BRUSHED NICKEL**



**COUNTERTOPS
CAMBRIA SANDGATE**



**SHOWER WALL & SHOWER FLOOR
CATCH ICE GLOSSY 4X16**



**BATHROOM FLOOR
SERENDRA LUNA
POLISHED 12X24**

SHOWCASE HOME DESIGNER FEATURES | BATH 3



**CABINETS
TAMARIND
DRIZZLE**



HARDWARE 625-160SN



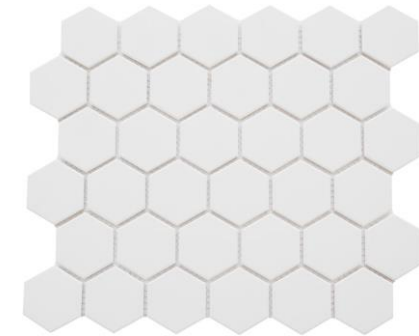
**MOEN ALIGN
BRUSHED NICKEL**



**COUNTERTOPS
SWANBRIDGE**



**SHOWER WALLS & BATHROOM FLOOR
SERENDRA LUNA POLISHED 12X24**



**SHOWER FLOOR
WHITE MATTE 2" HEX**

SHOWCASE HOME DESIGNER FEATURES | CABANA BATH



**CABINETS
TAMARIND WHITE CAP**



HARDWARE 625-160SN



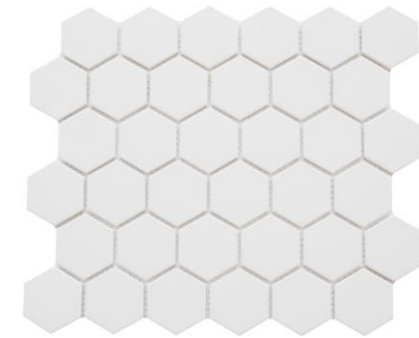
**MOEN ALIGN
BRUSHED NICKEL**



**COUNTERTOPS
SMITHFIELD**



**SHOWER WALLS & BATHROOM FLOOR
SERENDRA LUNA MATTE 12X24**



**SHOWER FLOOR
WHITE MATTE 2" HEX**