

SHOWCASE HOME | WILLOW

CANOPY CREEK

Street Address: 5479 SW Pomegranate Way

A/C Sq. Ft.: 4002

Bedrooms: 3

Bathrooms: 3.5

Move-In Date: may 2024



ELEVATION: A



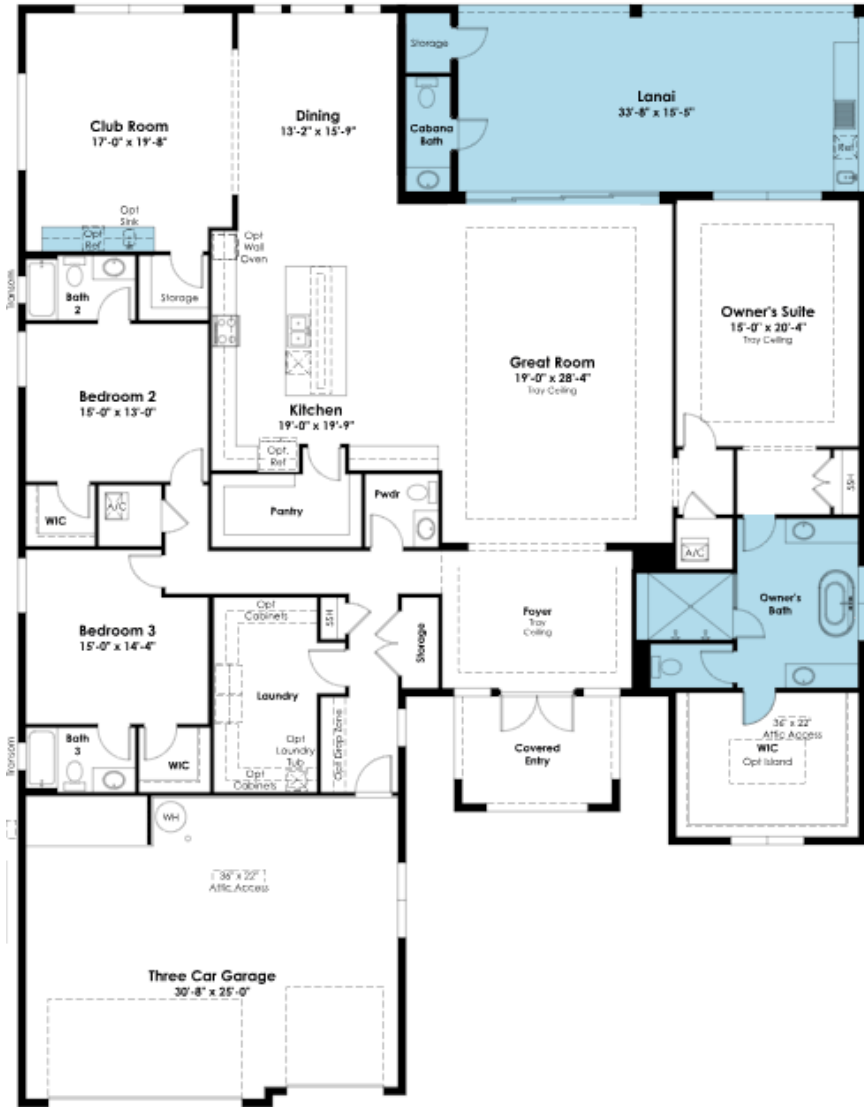
HOMESITE: 117

Canopy Creek | 12345 Main Street, Community Town, FL, 12345



©2022. Prices, homesites, amenities, home designs, square footage and other information subject to errors, changes, omissions, deletions, availability, prior sales and withdrawal at any time without notice. Square footage numbers are approximate and may vary depending on the standard measurement used. Photos and/or drawings of homes may show upgraded landscaping and may not represent the lowest priced homes in the community. All renderings and floorplans in these materials are an artist's conceptual drawings and will vary from the actual plans and homes as built. CGC1509406

KOLTERHOMES®



SHOWCASE HOME FLOORPLAN

THE WILLOW

Canopy Creek | 12345 Main Street, Community Town, FL, 12345



©2022. Prices, homesites, amenities, home designs, square footage and other information subject to errors, changes, omissions, deletions, availability, prior sales and withdrawal at any time without notice. Square footage numbers are approximate and may vary depending on the standard measurement used. Photos and/or drawings of homes may show upgraded landscaping and may not represent the lowest priced homes in the community. All renderings and floorplans in these materials are an artist's conceptual drawings and will vary from the actual plans and homes as built. CGCI509406

KOLTERHOMES

SHOWCASE HOME FEATURE HIGHLIGHTS

KITCHEN DETAILS

- GLASS CABINETS WITH LIGHTS
- CABINET CROWN MOLDING
- SECOND TIER CABINETRY
- 3" QUARTZ ISLAND EDGE
- DOUBLE TRASH PULLOUT
- MONOGRAM BUILT IN APPLIANCE
- DOUBLE ISLAND WATERFALL

DESIGNER FEATURES

- 4 FT EXTENSION WHOLE HOUSE
- STAND ALONE SOAKING TUB
- WET BAR IN CLUB ROOM
- CABANA BATH
- HARDWOOD THROUGHOUT



SHOWCASE HOME DESIGNER FEATURES | KITCHEN



**PERIMETER CABINETS
SALEM WHITE CAP**



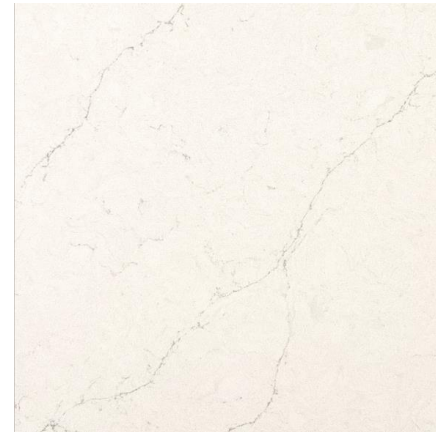
**ISLAND CABINETS
SALEM BLACK**



HARDWARE 625-160SN



**MOEN STO
SPOT RESISTANT
STAINLESS**



**COUNTERTOPS
DAL VALOR WHITE**



**BACKSPLASH
CATCH ICE
GLOSSY 3X12**



**SEESIDE
RESERVE
BLEACHED LINEN**

SHOWCASE HOME DESIGNER FEATURES | OWNERS BATH



**KEELIE MAPLE
DRIZZLE**



HARDWARE 625-160SN



**MOEN ALIGN 8"
BRUSHED NICKEL**

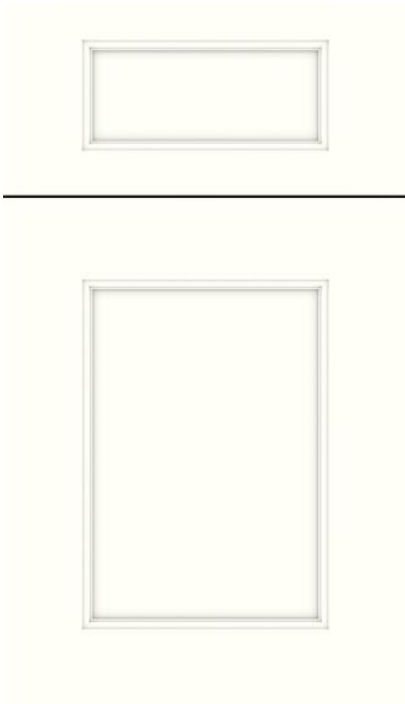


**COUNTERTOPS
CAMBRIA
SMITHFIELD**



**SHOWER WALLS &
BATHROOM FLOOR
VARA RIBIA
POLISHED**

SHOWCASE HOME DESIGNER FEATURES | BATH 2



CABINETS
TAMARIND MAPLE
WHITE CAP



HARDWARE 625-160SN



MOEN ALIGN
BRUSHED NICKEL



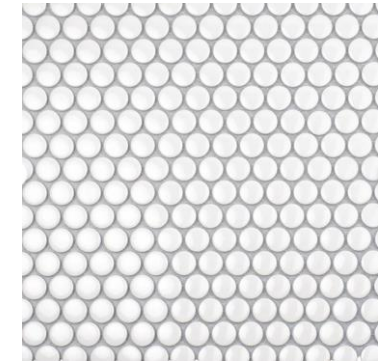
COUNTERTOPS
CAMBRIA
TORQUAY



BATHROOM FLOOR
KUDOS PERLA12X24
MATTE



TUB WALLS
ESMER CATCH ICE
GLOSSY 4X16



SHOWER WALL LISTELLO
WHITE GLOSS PENNYROUND

SHOWCASE HOME DESIGNER FEATURES | BATH 3



CABINETS
TAMARIND MAPLE
DRIZZLE



HARDWARE 625-160SN



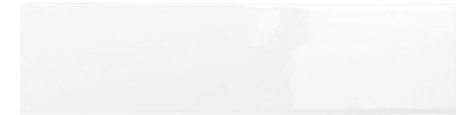
MOEN ALIGN
BRUSHED NICKEL



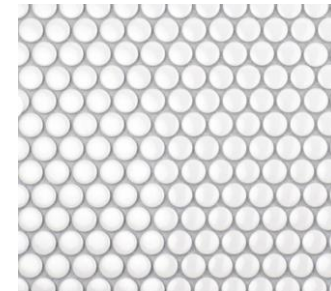
COUNTERTOPS
CAMBRIA
SANDGATE



BATHROOM FLOOR
VARA RIBIA
12X24 MATTE



SHOWER WALL
CATCH ICE
4X16 GLOSSY



SHOWER FLOOR
WHITE PENNY ROUNDS

SHOWCASE HOME DESIGNER FEATURES | WET BAR



**CABINETS
SALEM BLACK**



HARDWARE 625-160SN



**MOEN STO
SPOT RESISTANT
STAINLESS**



**COUNTERTOPS
DAL VALOR WHITE**



**SEESIDE
RESERVE
BLEACHED LINEN**