

SHOWCASE HOME | LEMONGRASS

KOLTER HOMES®

Street Address: 27010 SW Viterbo Way

A/C Sq. Ft.: 1,505

Bedrooms: 2

Bathrooms: 2

Move-In Date: DECEMBER 2023



ELEVATION: B



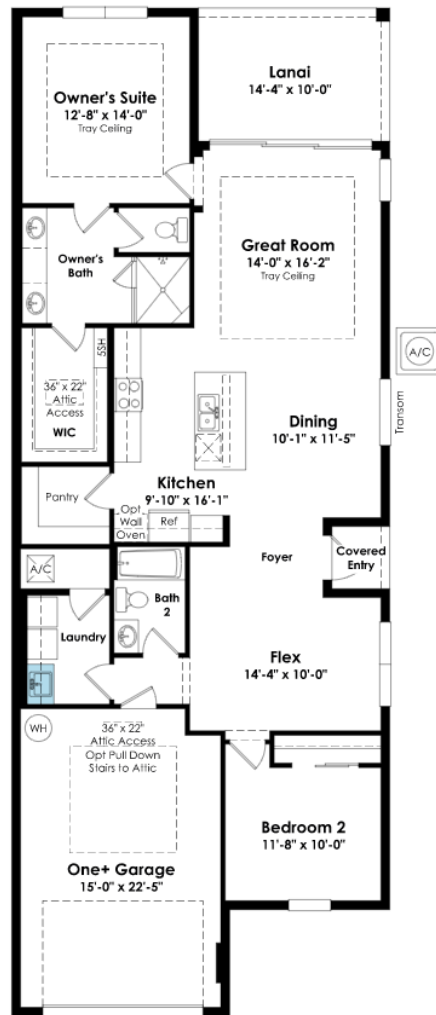
HOMESITE: 3.0461

PGA Village Verano | 27010 SW Viterbo Way



© 2022. Prices, homesites, amenities, home designs, square footage and other information subject to errors, changes, omissions, deletions, availability, prior sales and withdrawal at any time without notice. Square footage numbers are approximate and may vary depending on the standard measurement used. Photos and/or drawings of homes may show upgraded landscaping and may not represent the lowest priced homes in the community. All renderings and floorplans in these materials are an artist's conceptual drawings and will vary from the actual plans and homes as built. CGC1509406

KOLTERHOMES®



SHOWCASE HOME FLOORPLAN

THE LEMONGRASS

2 Bedroom, Flex, 2 Full Baths, Great Room, Covered Lanai and 1.5-Car Garage



SHOWCASE HOME FEATURE HIGHLIGHTS

KITCHEN DETAILS

- Stainless Steel GE Appliance Package
- Cabinet crown moulding
- 42" upgraded cabinets Quartz countertops
- Under Cabinet Lighting
- Stainless Steel Single Bowl Undermount Sink

DESIGNER FEATURES

- Laundry Tub Sink
- Impact Windows
- Frameless shower in owner's bath
- Upgraded lighting package throughout
- Garage Epoxy Floor



SHOWCASE HOME DESIGNER FEATURES | KITCHEN

CABINETS



COUNTERTOP
QUARTZ



FAUCET
SPOT RESISTANT STAINLESS



MAIN FLOORING



BACKSPLASH



SINK
STAINLESS STEEL



CABINET HARDWARE



SHOWCASE HOME DESIGNER FEATURES | MASTER BATH

CABINETS



COUNTERTOP
QUARTZ



FLOORING



WALL TILE



PLUMBING



CABINET HARDWARE



SHOWCASE HOME DESIGNER FEATURES | BATH #2

CABINETS



COUNTERTOP
QUARTZ



FLOORING



WALL TILE



PLUMBING



CABINET HARDWARE

