

SHOWCASE HOME | MAPLE



Street Address: 363 HURON LANE

A/C Sq. Ft.: 2216

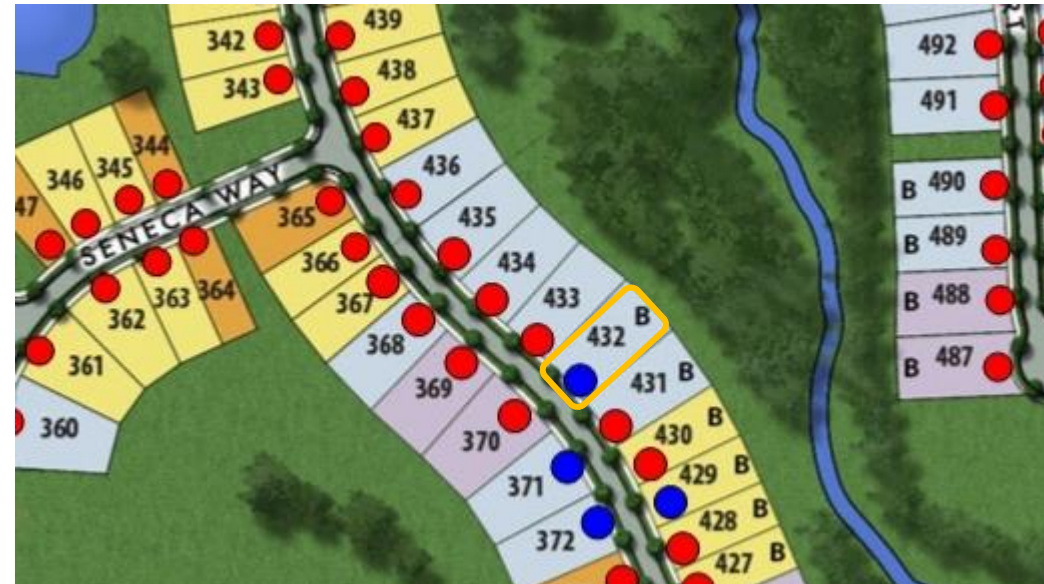
Bedrooms: 3

Bathrooms: 2.5

Move-In Date: December 2023



ELEVATION: CB



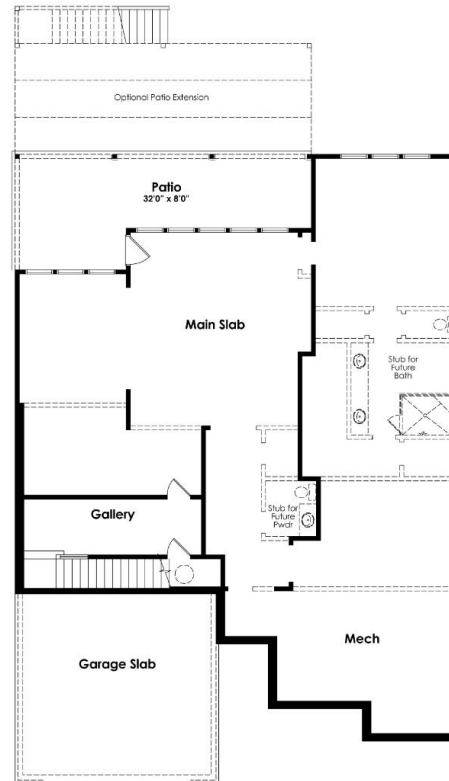
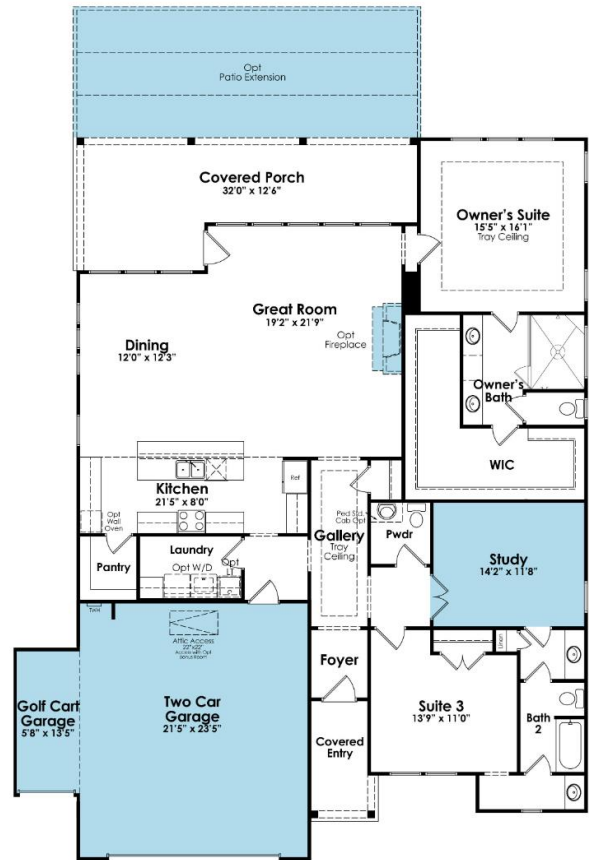
HOMESITE: 432

Cresswind Twin Lakes | 118 Hartwell Court, Hoschton, GA 30548



©2022. Prices, homesites, amenities, home designs, square footage and other information subject to errors, changes, omissions, deletions, availability, prior sales and withdrawal at any time without notice. Square footage numbers are approximate and may vary depending on the standard measurement used. Photos and/or drawings of homes may show upgraded landscaping and may not represent the lowest priced homes in the community. All renderings and floorplans in these materials are an artist's conceptual drawings and will vary from the actual plans and homes as built. CGC1509406

KOLTERHOMES®



SHOWCASE HOME FLOORPLAN

MAPLE

3 Bedroom, 2.5 Bath, Study, Great Room, Covered and Extended Lanai, 2-Car Garage, Golf Cart Garage and Unfinished Basement

Cresswind Twin Lakes | 118 Hartwell Court, Hoschton, GA 30548



SHOWCASE HOME FEATURE HIGHLIGHTS

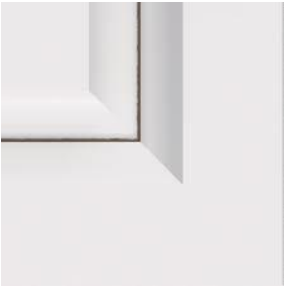
KITCHEN DETAILS

- 30" gas 5-burner cooktop
- GE Café appliances
- Cabinet crown molding
- Quartz countertops
- EVP flooring
- Under Cabinet Lighting
- Stainless Steel Single Bowl Undermount Sink

DESIGNER FEATURES

- 5 ¼" Cove Crown moulding in the Great Room and Dining Room
- Frameless shower in owner's bath
- Laundry Room with wall cabinets and laundry sink
- Gourmet kitchen
- Direct vent fireplace
- Extended Lanai

SHOWCASE HOME DESIGNER FEATURES | KITCHEN



**LEVEL 4 KAYES CABINETS
WHITE – PERIMETER
BUCKSKIN - ISLAND**



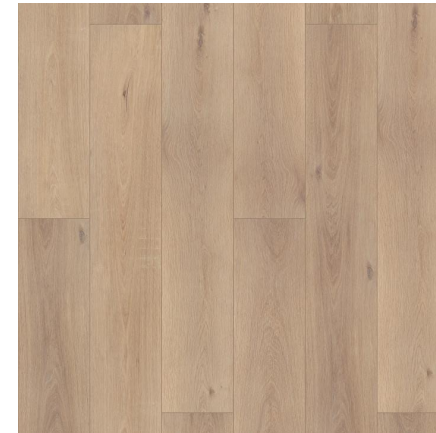
**LEVEL 3 QUARTZ COUNTERTOP
LUSSO**



**CATCH ICE WHITE 3X6
HERRINGBONE
BACKSPLASH**



**MOEN ALIGN SPRING PULL DOWN
FAUCET AND SOAP DISPENSER
SPOT RESISTANT STAINLESS**

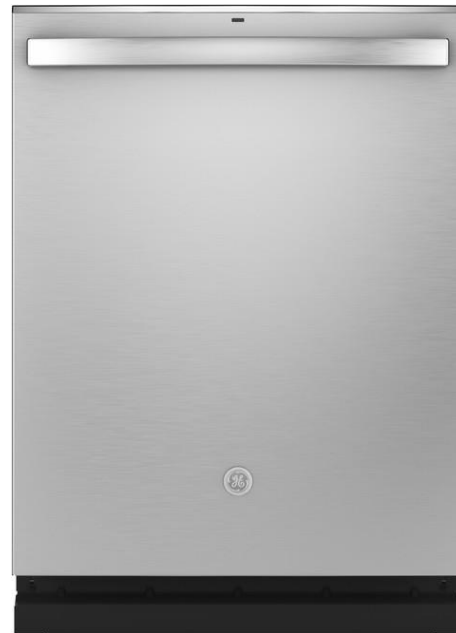


**LEVEL 3 EVP FLOORING
ENTERPRISE / RAVENSWOOD
OAK**

Cresswind Twin Lakes | 118 Hartwell Court, Hoschton, GA 30548



SHOWCASE HOME DESIGNER FEATURES | KITCHEN APPLIANCES



SHOWCASE HOME DESIGNER FEATURES | OWNERS BATH



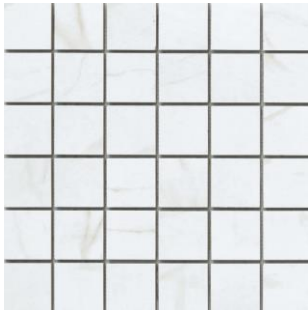
**LEVEL 4
CABINETS –
KAYES
BUCKSKIN**



**MOEN VOSS
8" SPREAD
BRUSHED
NICKEL**



**SILESTONE
QUARTZ-
ARIEL**



SHOWER FLOOR



**CONTESSA ORO MATTE
SHOWER WALLS AND
BATHROOM FLOOR**

Cresswind Twin Lakes | 118 Hartwell Court, Hoschton, GA 30548



SHOWCASE HOME DESIGNER FEATURES | BATH 2



**LEVEL 4
CABINETS
KAYES
BUCKSKIN**



**ARIEL
SILESTONE
QUARTZ**

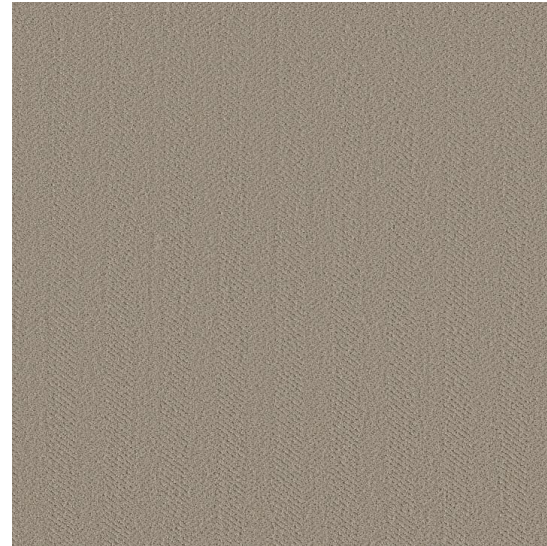
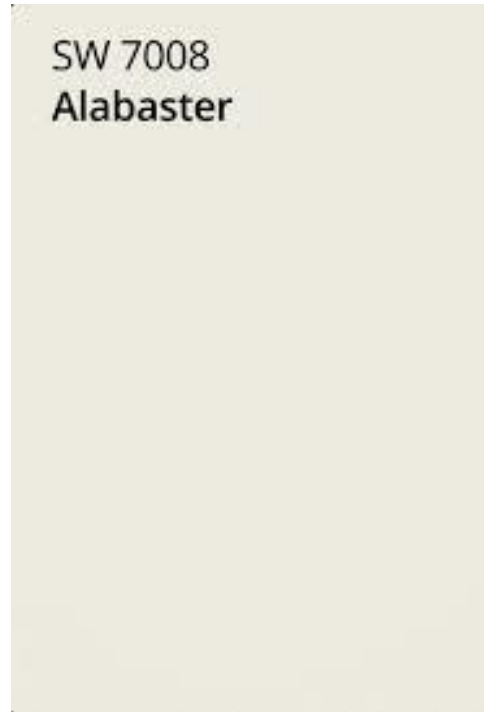


**SHOWER WALL AND BATHROOM FLOOR TILE
SOLARA FIRENZA 12X24**



**MOEN VOSS
SINGLE LEVER
BRUSHED
NICKEL**

SHOWCASE HOME DESIGNER FEATURES MAIN LEVEL - GENERAL FINISHES



**CARPET
LEVEL 4 MESQUITE FALLS
SANDSTONE**



**LEVEL 3 EVP FLOORING
ENTERPRISE
RAVENSWOOD OAK**

SHOWCASE HOME DESIGNER FEATURES | LIGHTING MAIN LEVEL



Cresswind Twin Lakes | 118 Hartwell Court, Hoschton, GA 30548



©2022. Prices, homesites, amenities, home designs, square footage and other information subject to errors, changes, omissions, deletions, availability, prior sales and withdrawal at any time without notice. Square footage numbers are approximate and may vary depending on the standard measurement used. Photos and/or drawings of homes may show upgraded landscaping and may not represent the lowest priced homes in the community. All renderings and floorplans in these materials are an artist's conceptual drawings and will vary from the actual plans and homes as built. CGC1509406

KOLTERHOMES[®]