

# THE ASPEN

2 Bedrooms, 3-1/2 Baths, Den/Office/Bedroom 3, 2-Car Garage



## Grande Oaks at HEATHROW

1450 Lake George Drive

Lake Mary, Florida 32746

T: 407.829.8961

Toll Free: 866.571.8933

**KOLTER**homes.com

**KOLTER**  
Creating Better Communities®

## Grande Oaks at HEATHROW

**KOLTER**  
Creating Better Communities®

PRICES AND PROGRAMS ARE SUBJECT TO CHANGE WITHOUT NOTICE. OFFERS, INCENTIVES AND SELLER CONTRIBUTIONS ARE SUBJECT TO CERTAIN TERMS, CONDITIONS AND RESTRICTIONS WHICH MAY INCLUDE DESIGNATED LENDERS AND CLOSING AGENTS. KOLTER CORPORATION RESERVES THE RIGHT TO CHANGE OR WITHDRAW ANY OFFER AT ANY TIME. COPYRIGHT 2008 KOLTER.



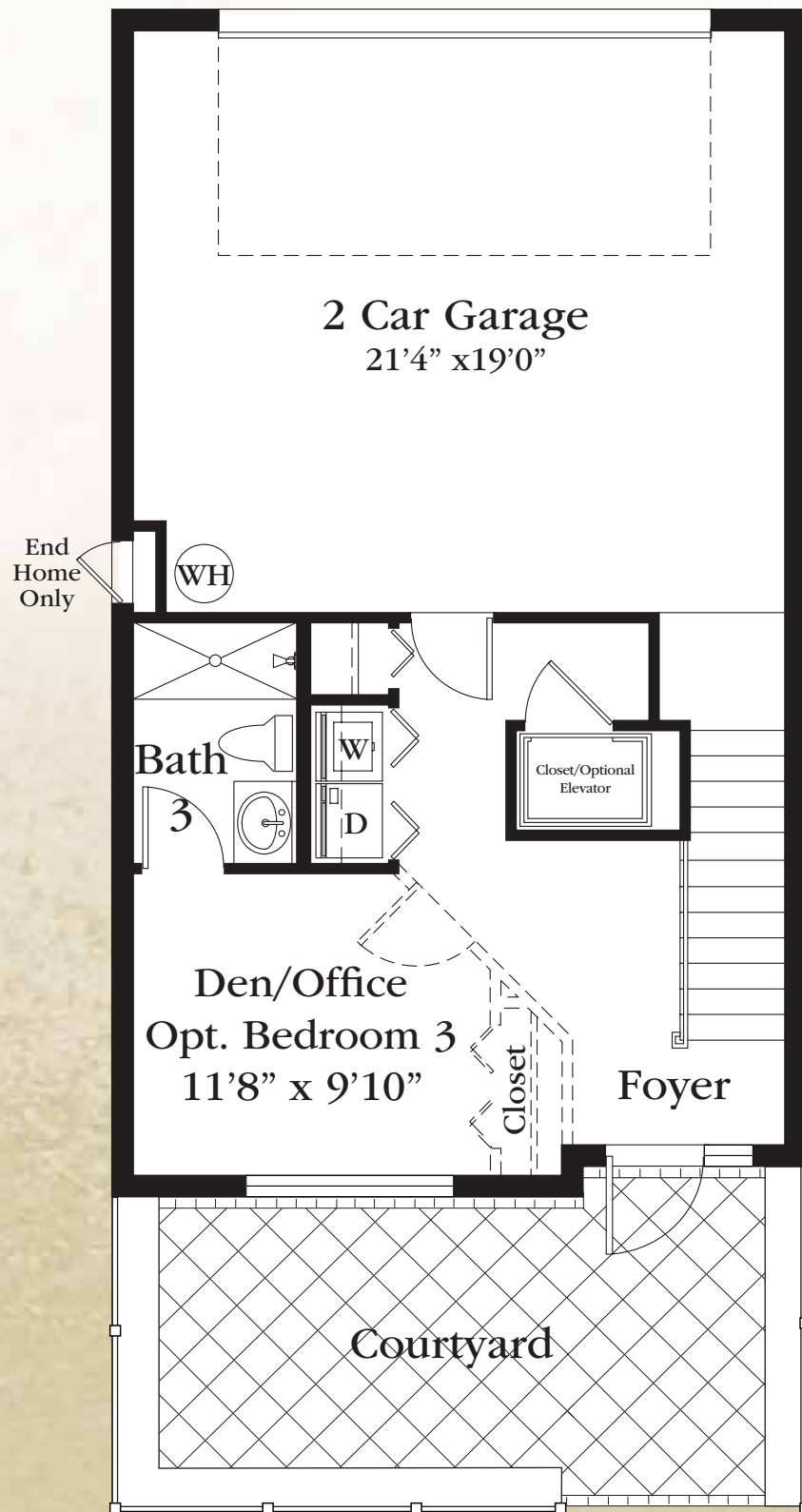
# THE ASPEN

2 Bedrooms, 3-1/2 Baths, Den/Office/Bedroom 3, 2-Car Garage

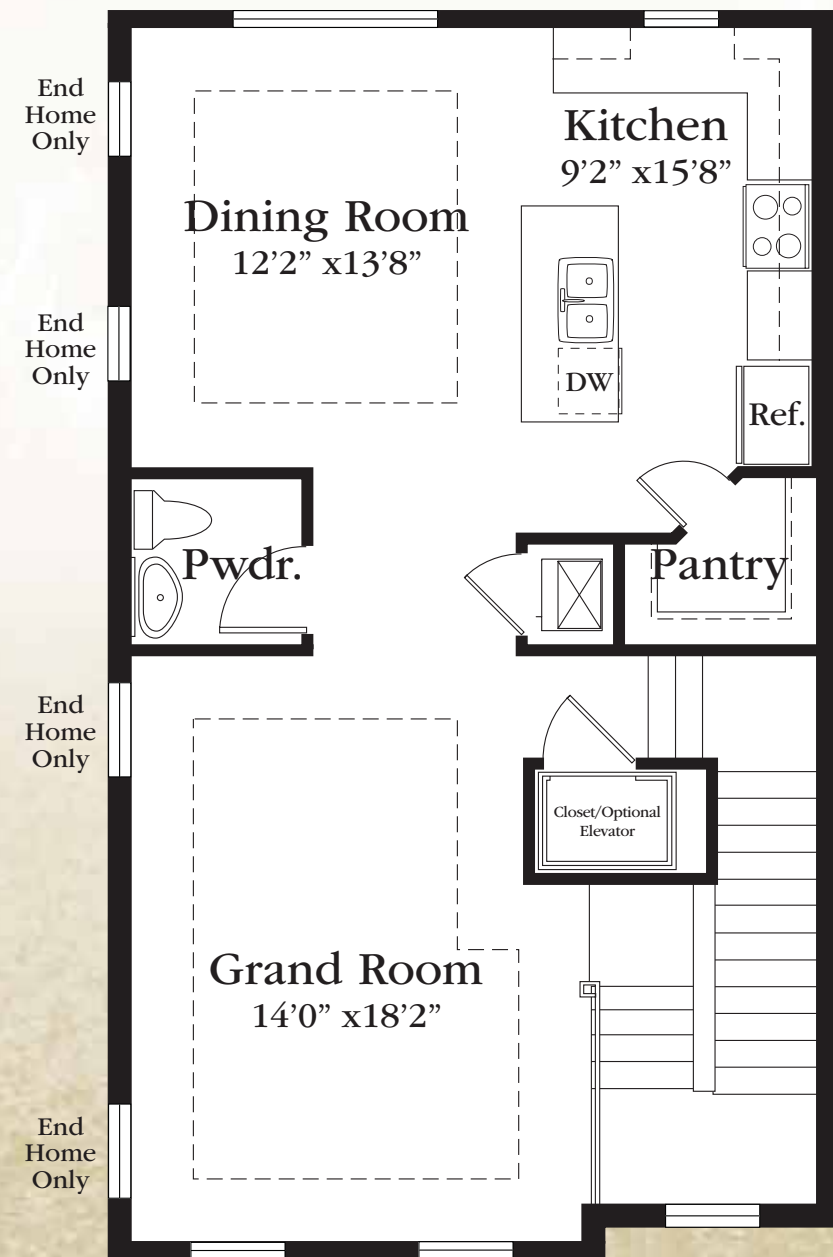
TOTAL A.C. AREA: 1,863 SQ. FT.

GRAND TOTAL: 2,345 SQ. FT.

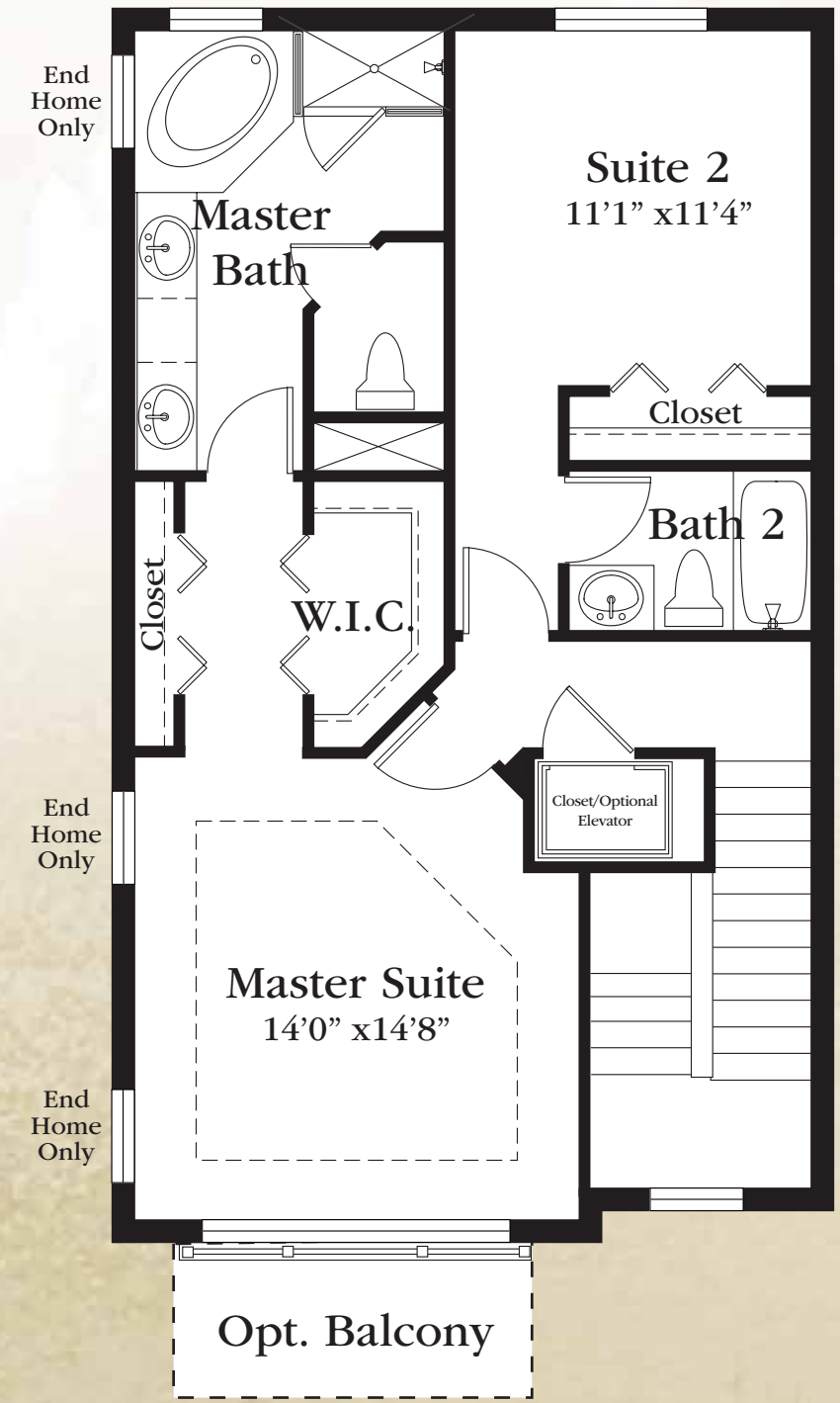
1st Floor	.....	395 sq. ft.
2nd Floor	.....	725 sq. ft.
3rd Floor	.....	743 sq. ft.
TOTAL A/C	.....	1,863 sq. ft.
Garage	.....	448 sq. ft.
Covered Entry	.....	.34 sq. ft.
GRAND TOTAL	.....	2,345 sq. ft.



First Floor



Second Floor



Third Floor

Sizes, features, specifications and dimensions are approximate and subject to change without notice.