

*Grande Oaks*  
at HEATHROW

*1450 Lake George Drive*

*Lake Mary, Florida 32746*

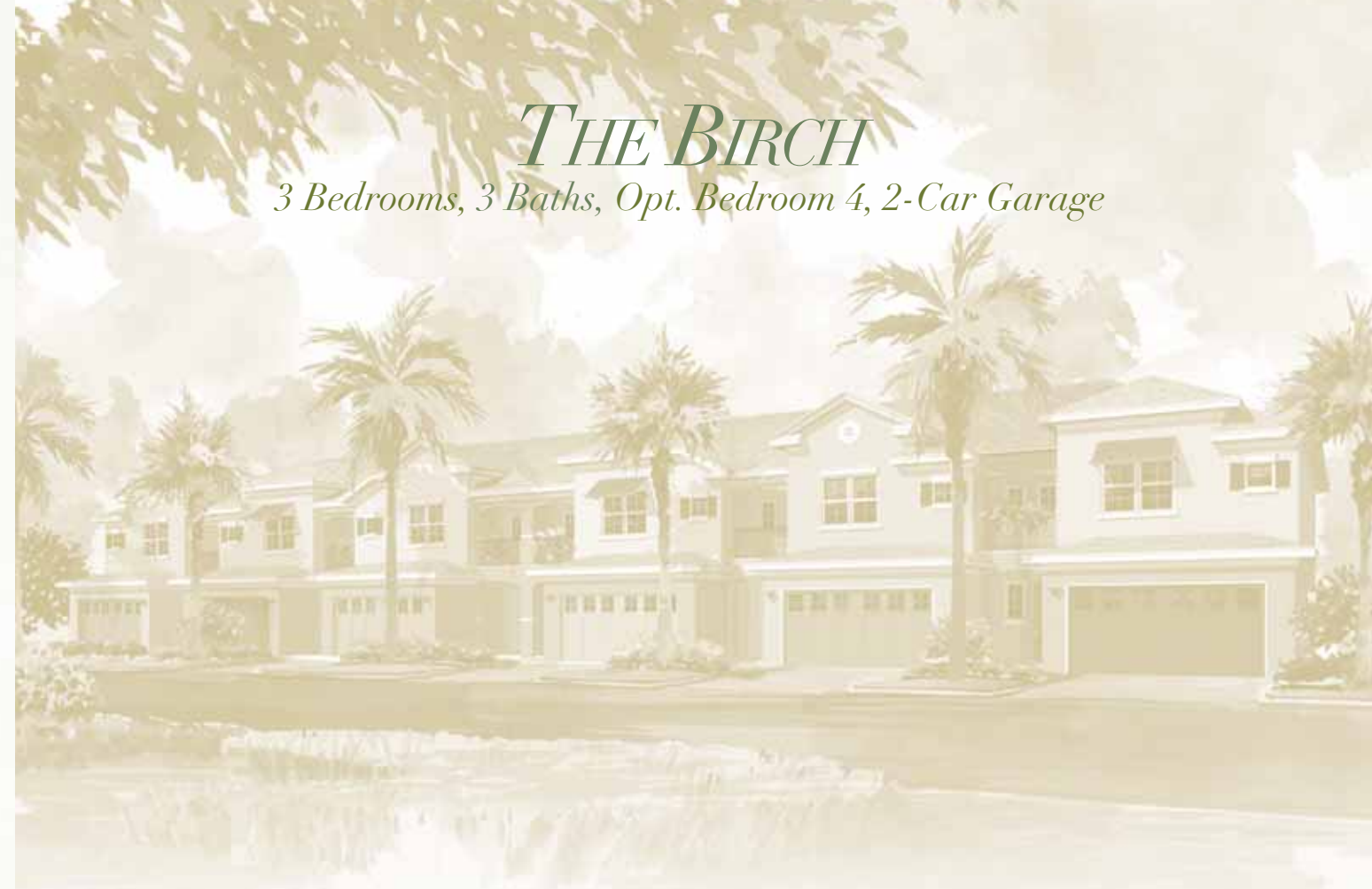
*T: 407.829.8961*

*Toll Free: 866.571.8933*

**KOLTER**homes.com

**KOLTER**  
Creating Better Communities®

*THE BIRCH*  
*3 Bedrooms, 3 Baths, Opt. Bedroom 4, 2-Car Garage*



*Grande Oaks*  
at HEATHROW

**KOLTER**  
Creating Better Communities®



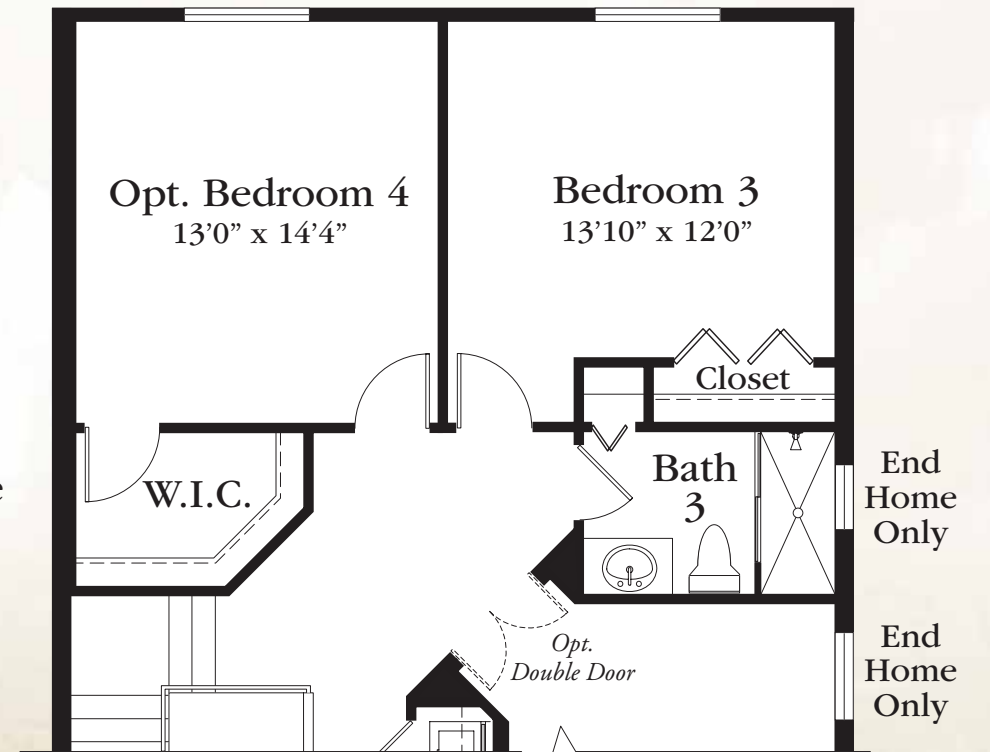
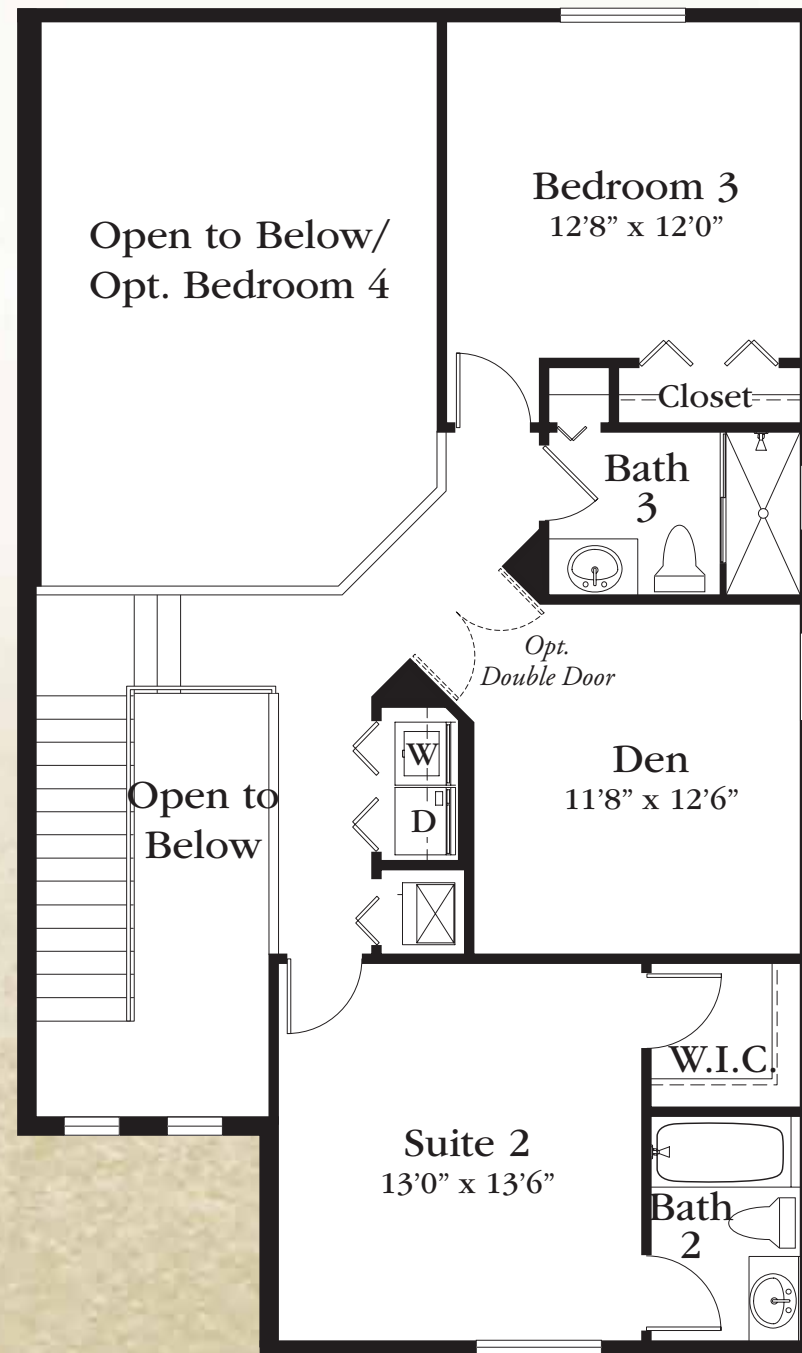
PRICES AND PROGRAMS ARE SUBJECT TO CHANGE WITHOUT NOTICE. OFFERS, INCENTIVES AND SELLER CONTRIBUTIONS ARE SUBJECT TO CERTAIN TERMS, CONDITIONS AND RESTRICTIONS WHICH MAY INCLUDE DESIGNATED LENDERS AND CLOSING AGENTS. KOLTER CORPORATION RESERVES THE RIGHT TO CHANGE OR WITHDRAW ANY OFFER AT ANY TIME. COPYRIGHT 2008 KOLTER.

# THE BIRCH

3 Bedrooms, 3 Baths, Opt. Bedroom 4, 2-Car Garage

TOTAL A.C. AREA: 1,857 SQ. FT.

GRAND TOTAL: 2,355 SQ. FT.



1st Floor	.996 sq. ft.
2nd Floor	.861 sq. ft.
TOTAL A/C	1,857 sq. ft.
Garage	.402 sq. ft.
Patio	.96 sq. ft.
GRAND TOTAL	2,355 sq. ft.

<i>With Opt. Bedroom 4</i>	
1st Floor	.996 sq. ft.
2nd Floor	.861 sq. ft.
Opt. Bedroom 4	.281 sq. ft.
TOTAL A/C	2,138 sq. ft.
Garage	.402 sq. ft.
Patio	.96 sq. ft.
GRAND TOTAL	2,636 sq. ft.

First Floor

Second Floor

Second Floor with Opt. Bedroom 4

Sizes, features, specifications and dimensions are approximate and subject to change without notice.