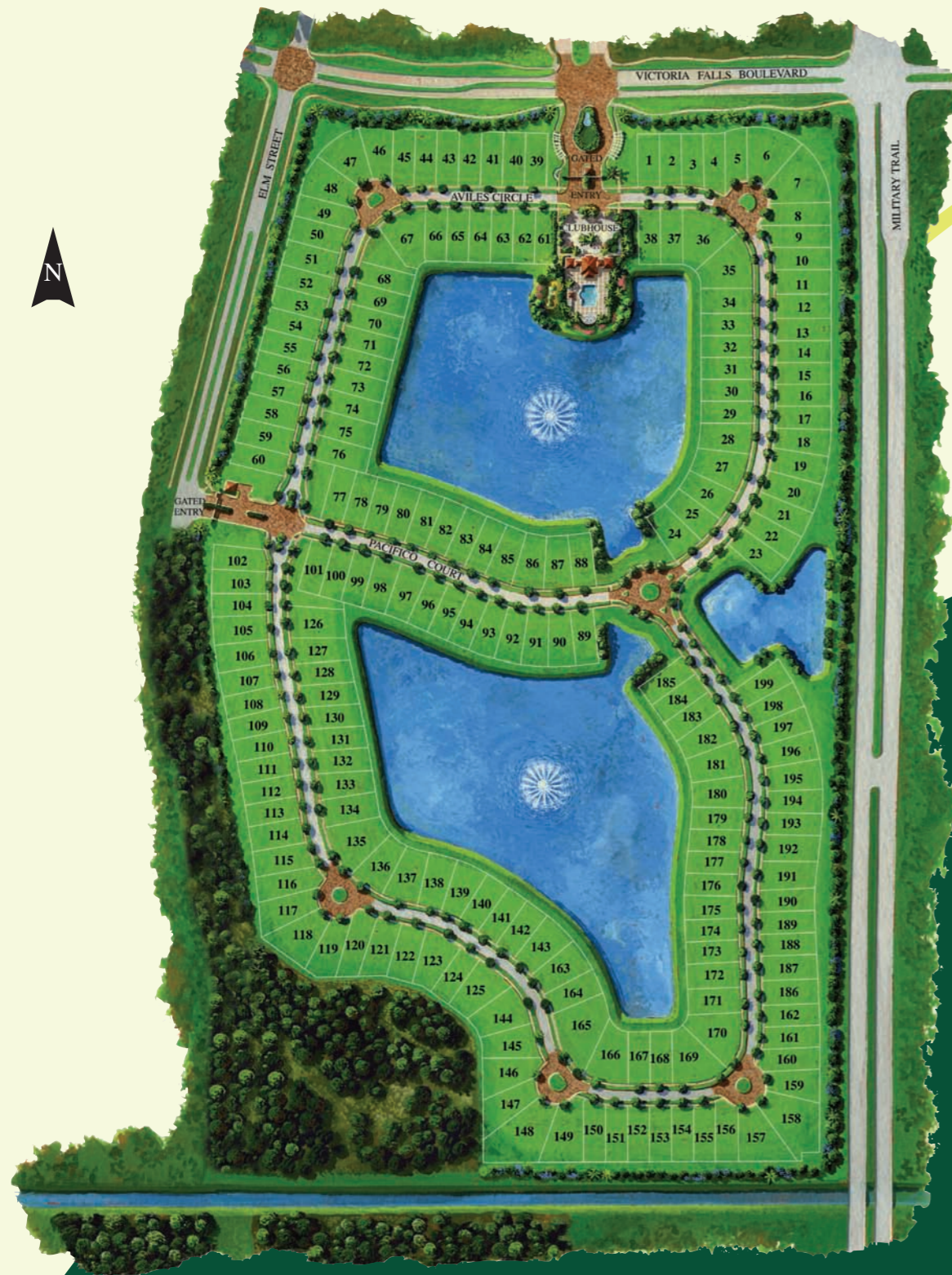


# THE CORDOBA



SEVILLE ELEVATION



MADERA ELEVATION

From I-95, take PGA Boulevard West (exit 79).  
Proceed West to Military Trail. Turn right on Military Trail, proceed 1.5 miles,  
Paloma will be on your left.

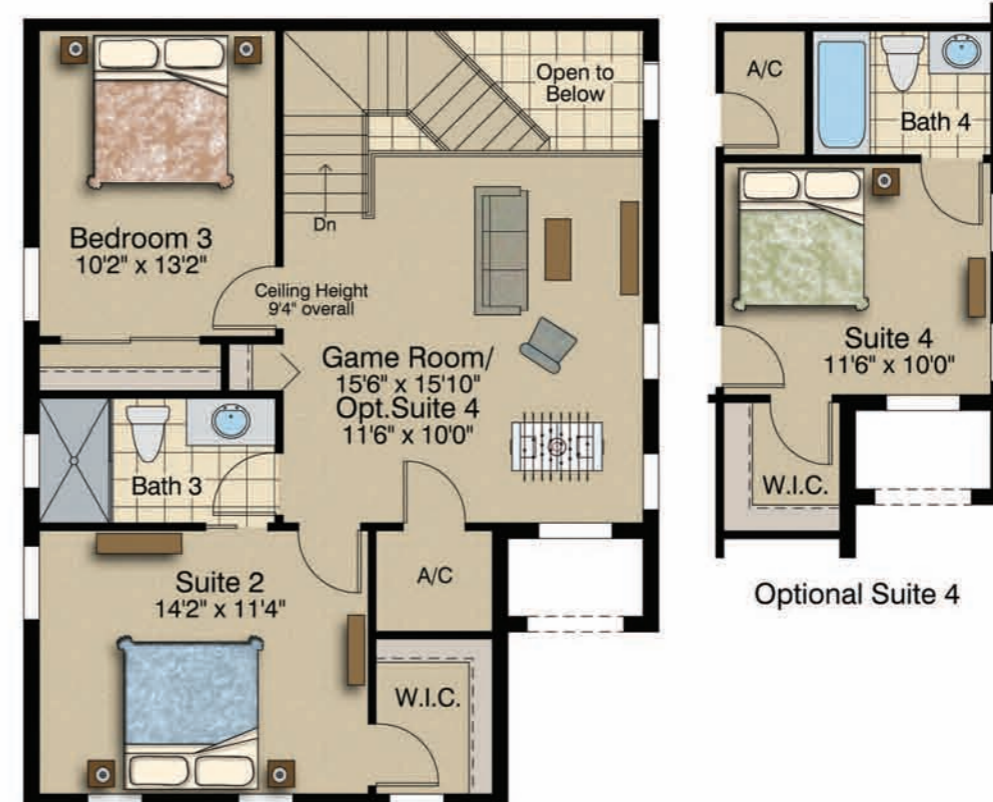
12496 Aviles Circle, Palm Beach Gardens, FL 33418  
561-799-7077 • 561-799-5886 fax • paloma@kolter.com

KOLTERhomes.com



*Paloma*  
downtown palm beach gardens

# THE CORDOBA



The CORDOBA  
 3-5 Bedroom, 3 Bathrooms & 2 Car Garage

2852 Sq. Ft. Living Area  
 437 Sq. Ft. Garage  
 133 Sq. Ft. Covered Lanai  
 23 Sq. Ft. Covered Entry

3445 Sq. Ft. Total

— DRAFT —