

SHOWCASE HOME | MADISON

KOLTER HOMES®

Street Address: 2180 SE MOSAIC BLVD

A/C Sq. Ft.: 2,289

Bedrooms: 4

Bathrooms: 3

Move-In Date: February/March



ELEVATION:C

HOMESITE: 124

Mosaic | 2180 SE Mosaic Blvd



© 2022. Prices, homesites, amenities, home designs, square footage and other information subject to errors, changes, omissions, deletions, availability, prior sales and withdrawal at any time without notice. Square footage numbers are approximate and may vary depending on the standard measurement used. Photos and/or drawings of homes may show upgraded landscaping and may not represent the lowest priced homes in the community. All renderings and floorplans in these materials are an artist's conceptual drawings and will vary from the actual plans and homes as built. CGC1509406

KOLTERHOMES®



SHOWCASE HOME FLOORPLAN

MADISON

4 Bedroom, 3 Full Bathroom, Family Room,
Covered Lanai and 2-Car Garage

SHOWCASE HOME FEATURE HIGHLIGHTS

KITCHEN DETAILS

- Split Kitchen Configuration
- 30" gas cooktop
- Under Cabinet Hood
- Cabinet crown moulding
- 42" upgraded cabinets
- Quartz countertops
- Under Cabinet Lighting
- Stainless Steel Single Bowl Undermount Sink

DESIGNER FEATURES

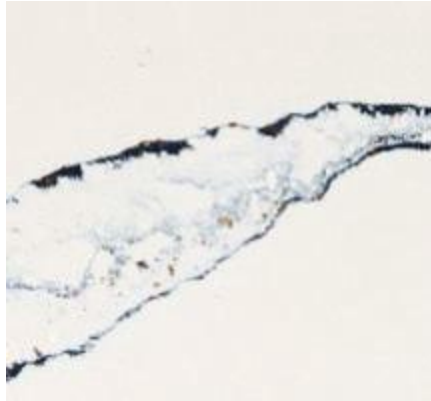
- 4' Extended Owner's Suite and Lanai
- 4th Bedroom ILO Flex Room
- Upgraded lighting package throughout
- 17 x 17 Warm Gray tile in main living areas

SHOWCASE HOME DESIGNER FEATURES | KITCHEN

CABINETS



COUNTERTOP
QUARTZ



FAUCET
SPOT RESISTANT STAINLESS



MAIN FLOORING



BACKSPLASH



SINK
STAINLESS STEEL



CABINET HARDWARE



SHOWCASE HOME DESIGNER FEATURES | MASTER BATH

CABINETS



COUNTERTOP
QUARTZ



FLOORING



WALL TILE



PLUMBING



CABINET HARDWARE



SHOWCASE HOME DESIGNER FEATURES | BATH #2

CABINETS



COUNTERTOP
QUARTZ



FLOORING



WALL TILE



PLUMBING

CABINET HARDWARE



SHOWCASE HOME DESIGNER FEATURES | BATH #3

CABINETS



COUNTERTOP
QUARTZ



FLOORING



WALL TILE



PLUMBING

CABINET HARDWARE

