

SHOWCASE HOME | Michelangelo

KOLTER HOMES®

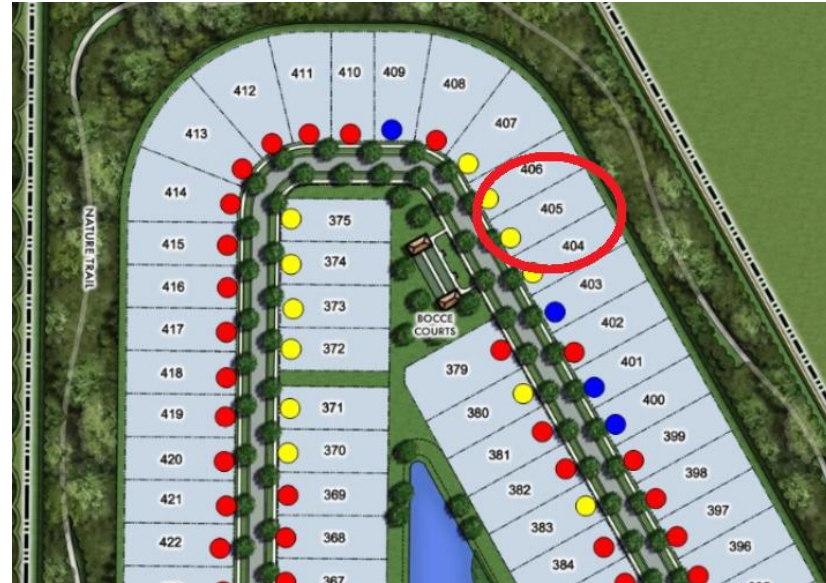
Street Address: 13294 Artisan Cir

A/C Sq. Ft.: 2,984

Bedrooms: 3 Bathrooms: 3.5

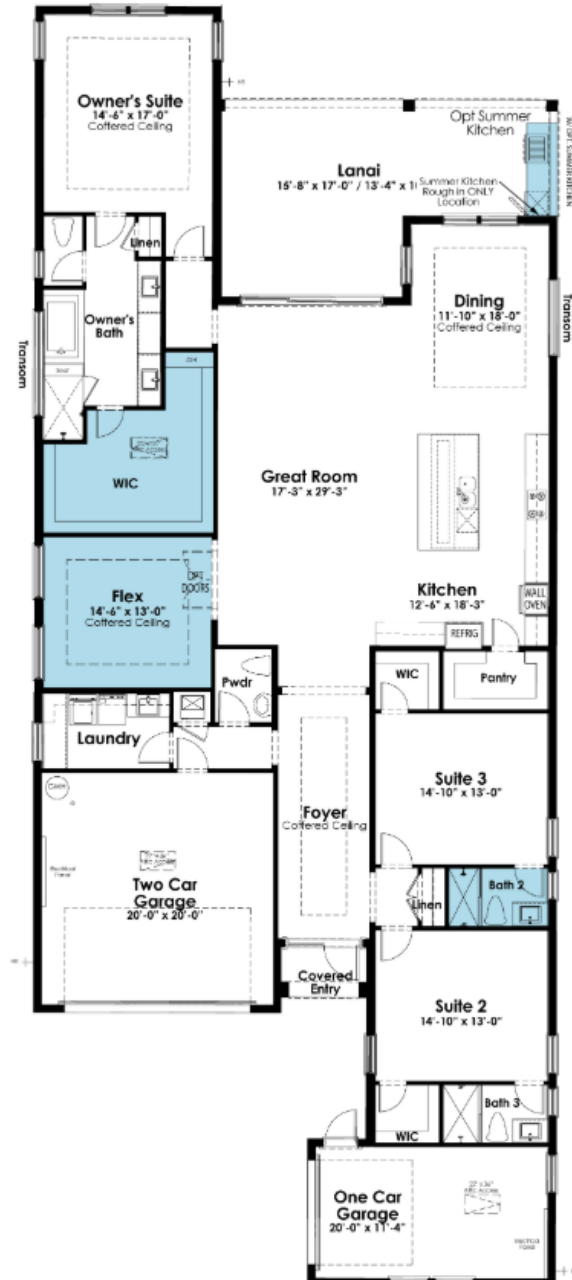


ELEVATION: B



HOMESITE: 5.405

Exterior Color Package:



SHOWCASE HOME FLOORPLAN

Michelangelo

This 3 Bedroom plan delivers a wealth of built-in features and a highly customizable design for those seeking unparalleled comfort and sophistication. Through its double door entry, the home welcomes you and your guests to enjoy its spacious open main living space centered around its large Island Kitchen. The feature-rich gourmet Kitchen offers tons of cabinets, extended countertops, a massive walk-in pantry, and a dine-in island with seating for five. The island overlooks an expansive Dining and Great Room kept light and bright by large windows and an oversized slider leading out to a spacious Covered Lanai and a backyard offering plenty of room for a pool. The Master's Suite provides an impressive 246 sq. ft. of space and comes complete with a spa-like Master Bath and massive walk-in closet, creating a private retreat in the rear of the home.

SHOWCASE HOME FEATURE HIGHLIGHTS

KITCHEN DETAILS

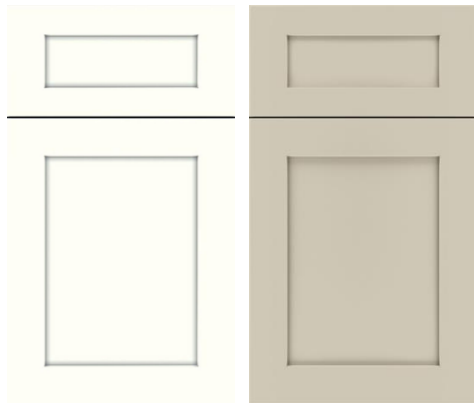
- KITCHEN- 36" Artisan Wood Hood
- KITCHEN Quartz - SquareINVERNESS
EVERLEIGH
- KITCHEN-Kitchen Island 3" Edge
- KITCHEN-Salem MDF Paint - Kitchen
Craft, PERIMETER: ALABASTER,
ISLAND: DAYBREAK
- KIKITCHEN- Second Tier Upper Cabinet
- KITCHEN- Cabinet Crown Mouldings
- KITCHEN- Cabinet Panel Package

DESIGNER FEATURES

- Expanded Walk-in Closet by Reducing
Club Room
- Summer Kitchen
- Tub to Shower Conversion in Secondary
Bath 2
- Add Double Doors to Den
- Gas Stub Out for Future Pool Heater
- Exterior Tankless Gas Water Heater

SHOWCASE HOME DESIGNER FEATURES | KITCHEN

CABINETS



**COUNTERTOP
QUARTZ &
BACKSPLASH**



**MAIN
FLOORING**



**CABINET
HARDWARE**



FAUCET



SINK



SHOWCASE HOME DESIGNER FEATURES | OWNERS BATH

CABINETS



**COUNTERTOP
QUARTZ**



FLOORING



WALL TILE



**CABINET
HARDWARE**



PLUMBING

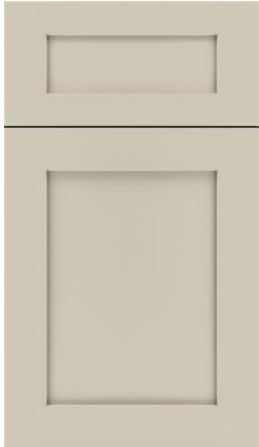


**SHOWER
FLOOR**



SHOWCASE HOME DESIGNER FEATURES | BATH #2

CABINETS



**COUNTERTOP
QUARTZ**



FLOORING



WALL TILE



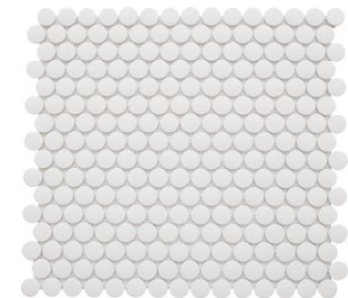
**CABINET
HARDWARE**



PLUMBING



**SHOWER
FLOOR**



SHOWCASE HOME DESIGNER FEATURES | BATH #3

CABINETS



**COUNTERTOP
QUARTZ**



FLOORING



WALL TILE



**CABINET
HARDWARE**



PLUMBING



**SHOWER
FLOOR**

