

# SHOWCASE HOME | WILLOW

# CANOPY CREEK

Street Address: 5310 SW Pomegranate Way

A/C Sq. Ft.: 4029

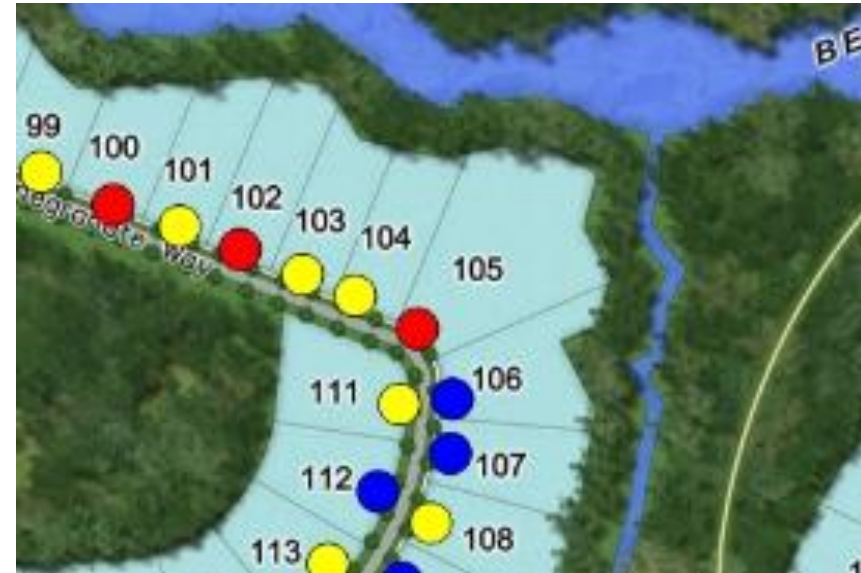
Bedrooms: 3

Bathrooms: 3.5

Move-In Date: April 2024



ELEVATION: A



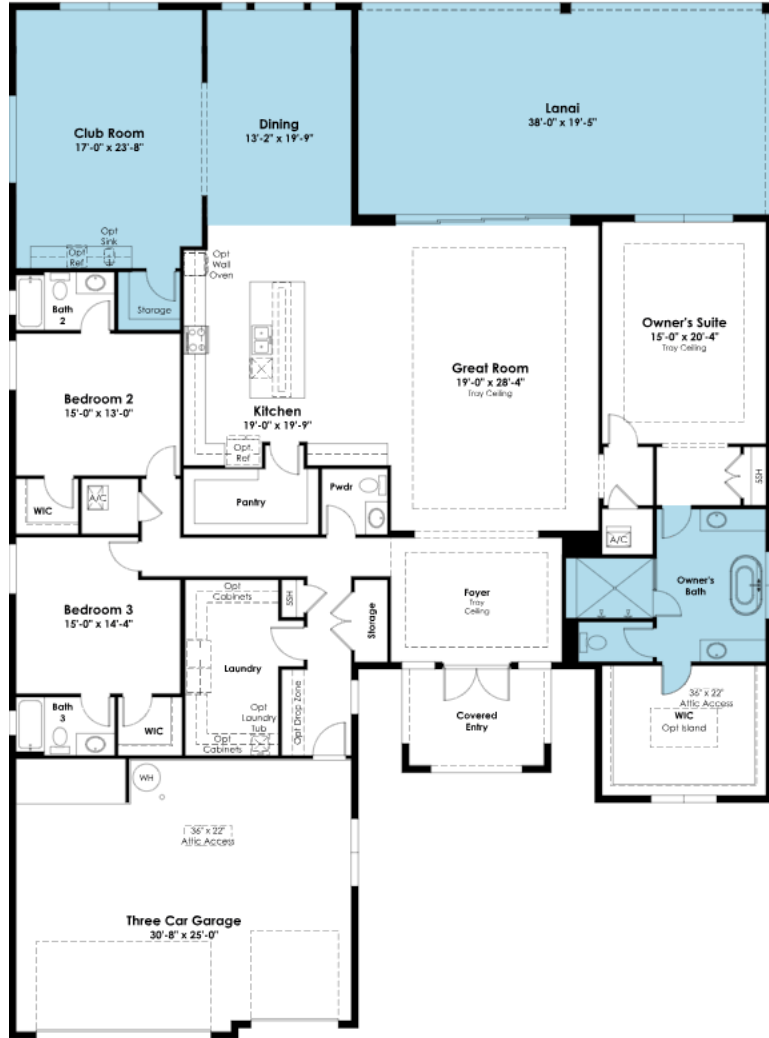
HOMESITE: 106

Canopy Creek | 12345 Main Street, Community Town, FL, 12345



©2022. Prices, homesites, amenities, home designs, square footage and other information subject to errors, changes, omissions, deletions, availability, prior sales and withdrawal at any time without notice. Square footage numbers are approximate and may vary depending on the standard measurement used. Photos and/or drawings of homes may show upgraded landscaping and may not represent the lowest priced homes in the community. All renderings and floorplans in these materials are an artist's conceptual drawings and will vary from the actual plans and homes as built. CGC1509406

KOLTERHOMES®



# SHOWCASE HOME FLOORPLAN

## THE WILLOW

Canopy Creek | 12345 Main Street, Community Town, FL, 12345



©2022. Prices, homesites, amenities, home designs, square footage and other information subject to errors, changes, omissions, deletions, availability, prior sales and withdrawal at any time without notice. Square footage numbers are approximate and may vary depending on the standard measurement used. Photos and/or drawings of homes may show upgraded landscaping and may not represent the lowest priced homes in the community. All renderings and floorplans in these materials are an artist's conceptual drawings and will vary from the actual plans and homes as built. CGC1509406

**KOLTERHOMES**®

# SHOWCASE HOME FEATURE HIGHLIGHTS

## KITCHEN DETAILS

- CABINET CROWN MOLDING
- SECOND TIER CABINETRY
- 3" ISLAND EDGE
- DOUBLE TRASH PULLOUT
- MONOGRAM BUILT IN APPLIANCES
- CABINET PANEL PACKAGE
- UNDER CABINET LIGHTING

## DESIGNER FEATURES

- 4 FT EXTENSION
- STAND ALONE SOAKING TUB
- WET BAR – CLUB ROOM
- EXTENDED CLUB ROOM



# SHOWCASE HOME DESIGNER FEATURES | KITCHEN



**CABINETS  
KEELIE NORDIC**



**HARDWARE 625-160SBZ**



**MOEN STO  
BRUSHED GOLD**



**COUNTERTOPS & BACKSPLASH  
CAMBRIA IVERNESS FROST**



**FLOORING  
TREFFOR PUMICE OAK**

# SHOWCASE HOME DESIGNER FEATURES | OWNERS BATH



**CABINETS  
KEELIE DRIZZLE**



**HARDWARE 625-160SBZ**



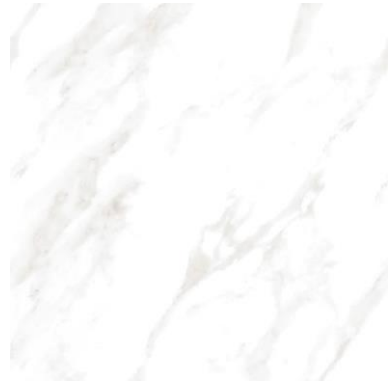
**MOEN CIA  
BRUSHED GOLD**



**COUNTERTOPS  
DAL MORNING  
FROST**



**SHOWER WALL  
VARA VARZO POLISHED 12X24**



**BATHROOM FLOORS  
VARA VARZO  
POLISHED 24X24**

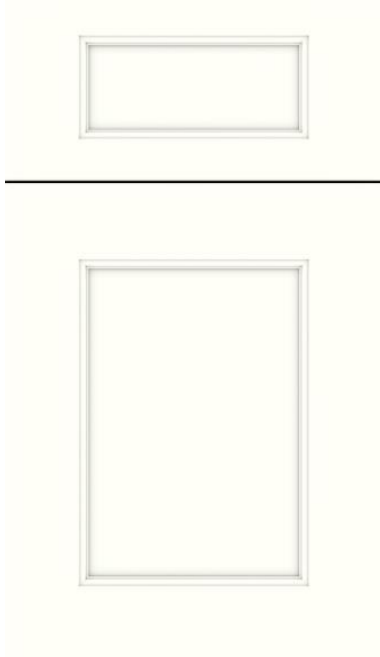
Canopy Creek | 12345 Main Street, Community Town, FL, 12345



©2022. Prices, homesites, amenities, home designs, square footage and other information subject to errors, changes, omissions, deletions, availability, prior sales and withdrawal at any time without notice. Square footage numbers are approximate and may vary depending on the standard measurement used. Photos and/or drawings of homes may show upgraded landscaping and may not represent the lowest priced homes in the community. All renderings and floorplans in these materials are an artist's conceptual drawings and will vary from the actual plans and homes as built. CGC1509406

**KOLTERHOMES**

## SHOWCASE HOME DESIGNER FEATURES | BATH 2



**CABINETS  
TAMARIND MAPLE  
WHITE CAP**



**HARDWARE 625-160SN**



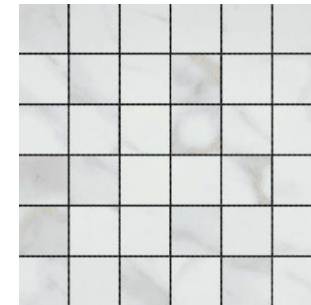
**MOEN CIA  
BRUSHED NICKEL**



**COUNTERTOPS  
CAMBRIA  
TORQUAY**



**SHOWER WALLS & BATHROOM FLOOR  
SERENDRA LUNA MATTE 12X24**



**SHOWER FLOOR  
SERENDRA LUNA MATTE  
2X2**

## SHOWCASE HOME DESIGNER FEATURES | BATH 3



**CABINETS  
TAMARIND MAPLE  
DRIZZLE**



**HARDWARE 625-160SN**



**MOEN CIA  
BRUSHED NICKEL**



**COUNTERTOPS  
CAMBRIA  
SANDGATE**

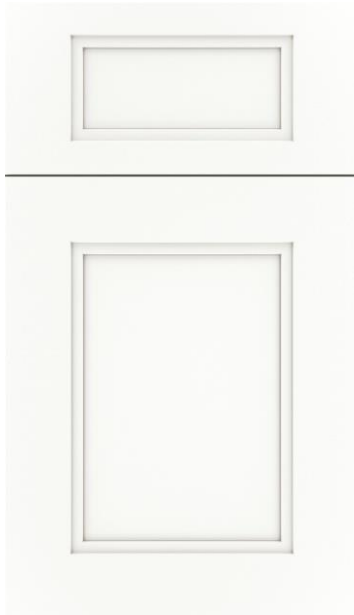


**SHOWER WALLS & SHOWER FLOOR  
CATCH ICE GLOSSY 4X16**



**BATHROOM FLOOR  
SERENDRA LUNA MATTE  
12X24**

## SHOWCASE HOME DESIGNER FEATURES | WET BAR



**CABINETS  
KEELIE MAPLE  
WHITE CAP**



**HARDWARE 625-160SBZ**



**MOEN STO  
BRUSHED GOLD**



**COUNTERTOPS  
CAMBRIA  
DELGATIE**



**FLOORING  
TREFFOR PUMICE OAK**