

# SHOWCASE HOME | DOGWOOD



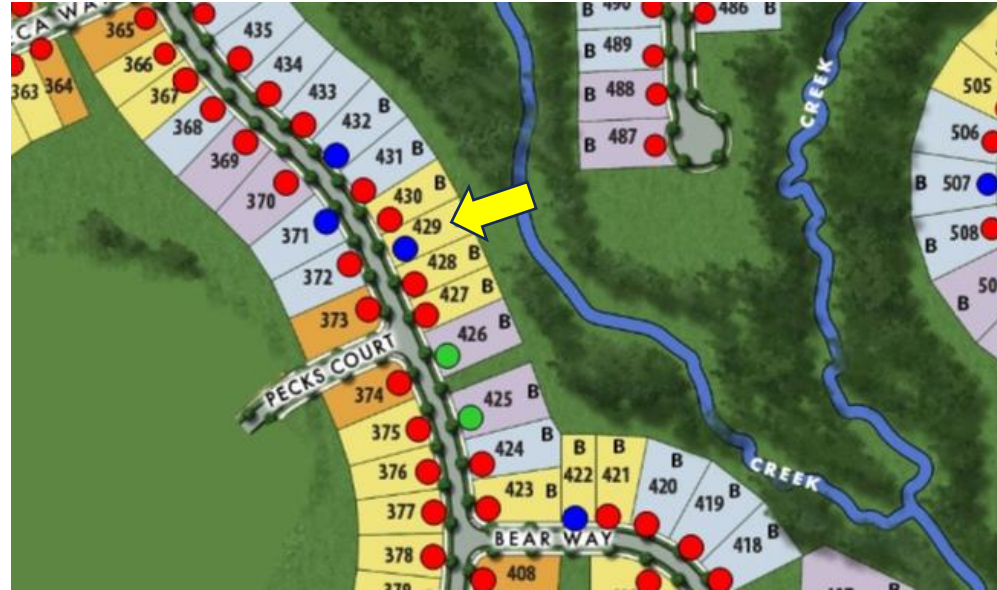
Street Address: 397 HURON LANE

A/C Sq. Ft.: 1788

Bedrooms: 2

Bathrooms: 2

Move-In Date: April 2024



ELEVATION: CH

HOMESITE: 429

Cresswind Twin Lakes| 118 Hartwell Court, Hoschton, GA 30548



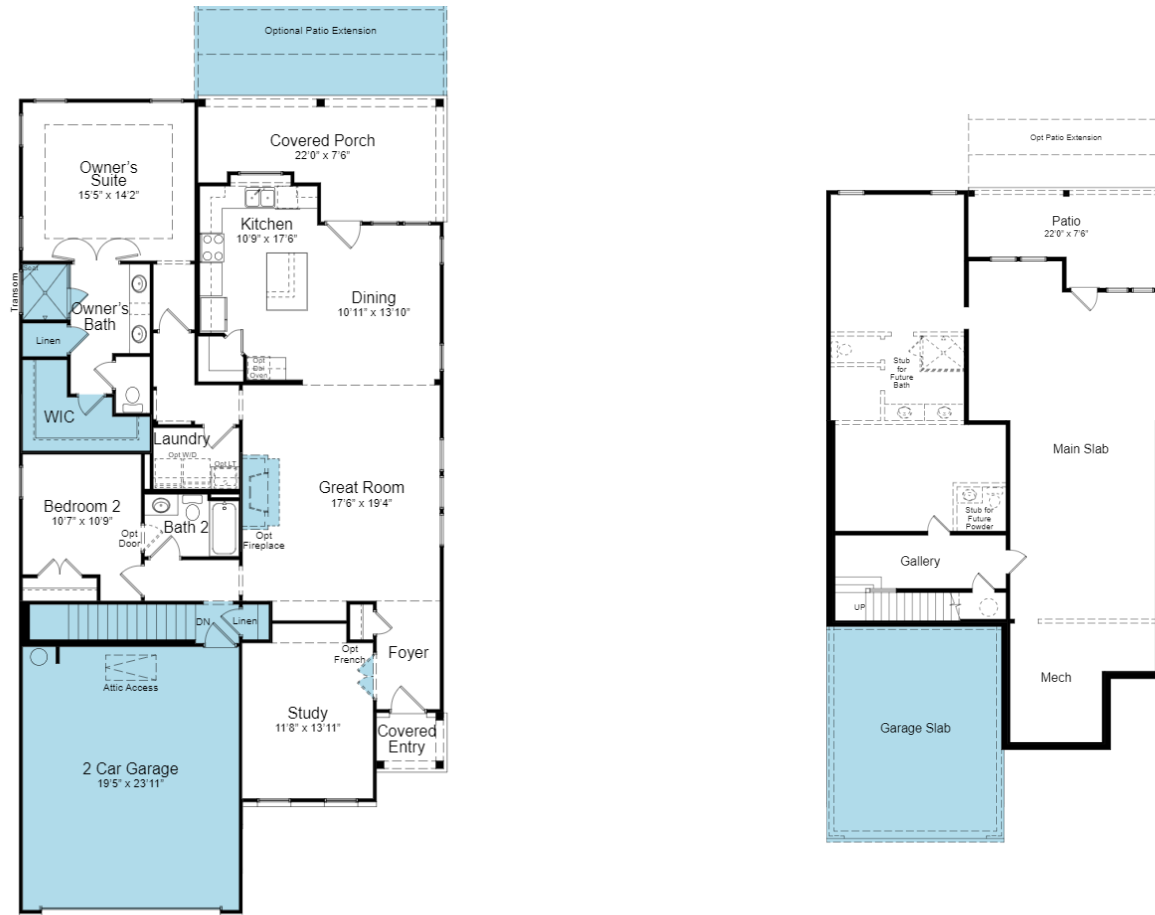
©2022. Prices, homesites, amenities, home designs, square footage and other information subject to errors, changes, omissions, deletions, availability, prior sales and withdrawal at any time without notice. Square footage numbers are approximate and may vary depending on the standard measurement used. Photos and/or drawings of homes may show upgraded landscaping and may not represent the lowest priced homes in the community. All renderings and floorplans in these materials are an artist's conceptual drawings and will vary from the actual plans and homes as built. CGCI509406



# SHOWCASE HOME FLOORPLAN

## DOGWOOD

2 Bedroom, 2 Bath, Den, Great Room, Fireplace, Covered and Extended Lanai, 2-Car Garage and Unfinished Basement



Cresswind Twin Lakes| 118 Hartwell Court, Hoschton, GA 30548



## SHOWCASE HOME FEATURE HIGHLIGHTS

### KITCHEN DETAILS

- 30" gas 5-burner cooktop
- Cabinet crown molding
- Quartz countertops
- EVP flooring
- Under Cabinet Lighting
- Stainless Steel Single Bowl Undermount Sink

### DESIGNER FEATURES

- Laundry Room with wall cabinets and laundry sink
- Gourmet kitchen
- Direct vent fireplace
- Extended Lanai
- Frameless shower in owner's bath

Cresswind Twin Lakes| 118 Hartwell Court, Hoschton, GA 30548



## SHOWCASE HOME DESIGNER FEATURES | KITCHEN



**LEVEL 3 LORMOND CABINETS  
ICY AVALANCHE**



**MOEN ALIGN SPRING PULL DOWN  
FAUCET STAINLESS**



**QUARTZ COUNTERTOP  
ARIEL**



**IMPACT  
HERRINGBONE  
MOSAIC  
BACKSPLASH**

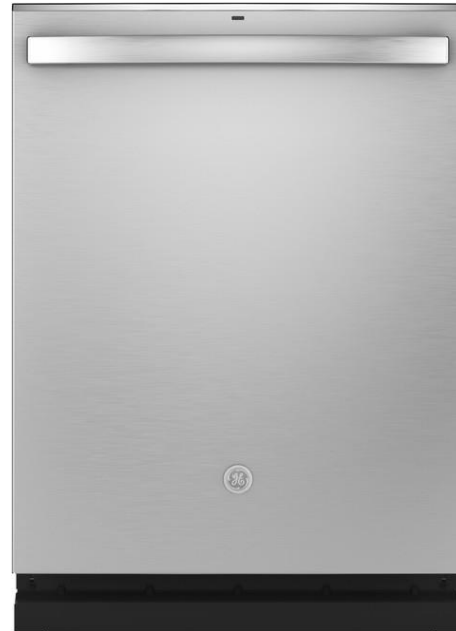


**EVP FLOORING  
POLARIS PLUS - CASTAWAY**

Cresswind Twin Lakes | 118 Hartwell Court, Hoschton, GA 30548



## SHOWCASE HOME DESIGNER FEATURES | KITCHEN APPLIANCES



Cresswind Twin Lakes | 118 Hartwell Court, Hoschton, GA 30548



## SHOWCASE HOME DESIGNER FEATURES | OWNERS BATH



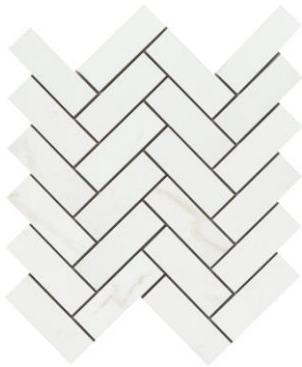
**CABINETS  
LORMOND  
ICY  
AVALANCHE**



**MOEN VOSS  
SINGLE LEVER  
BRUSHED  
NICKEL**



**SILESTONE  
QUARTZ-  
ARIEL**



**SHOWER FLOOR**

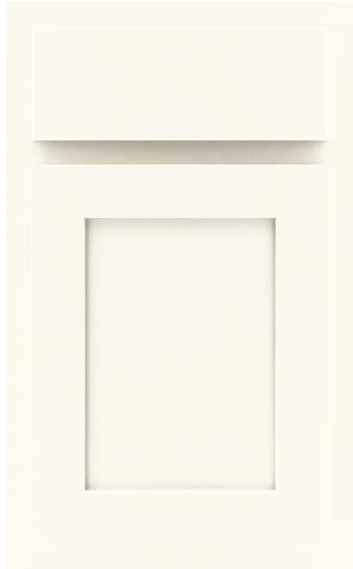


**CONTESSA ORO MATTE  
SHOWER WALLS AND  
BATHROOM FLOOR**

Cresswind Twin Lakes | 118 Hartwell Court, Hoschton, GA 30548



## SHOWCASE HOME DESIGNER FEATURES | BATH 2



**CABINETS  
LORMOND  
WHITE**



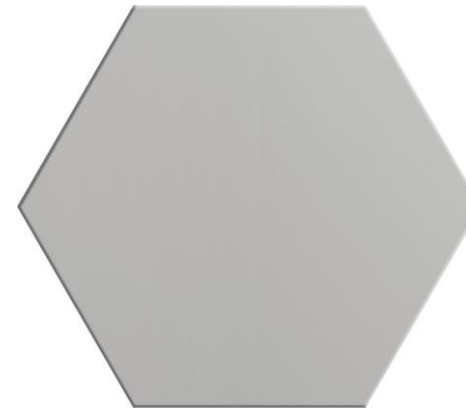
**DESERT SILVER  
SILESTONE  
QUARTZ**



**MOEN VOSS  
SINGLE LEVER  
BRUSHED  
NICKEL**



**SHOWER WALL TILE  
CATCH GRAY MATTE 4X16**

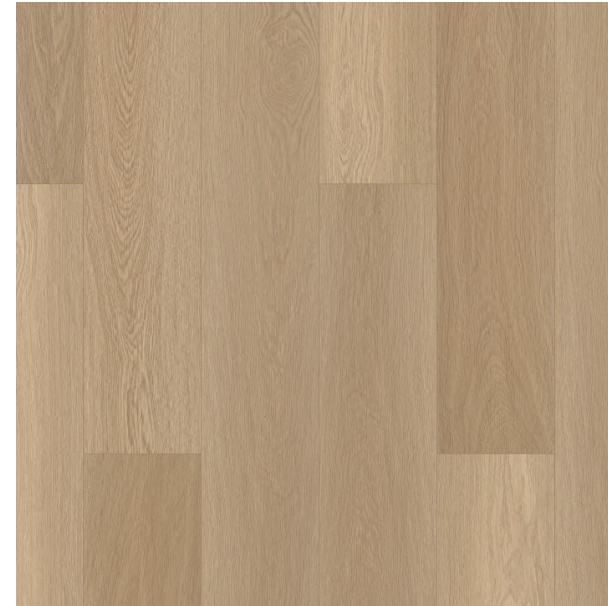
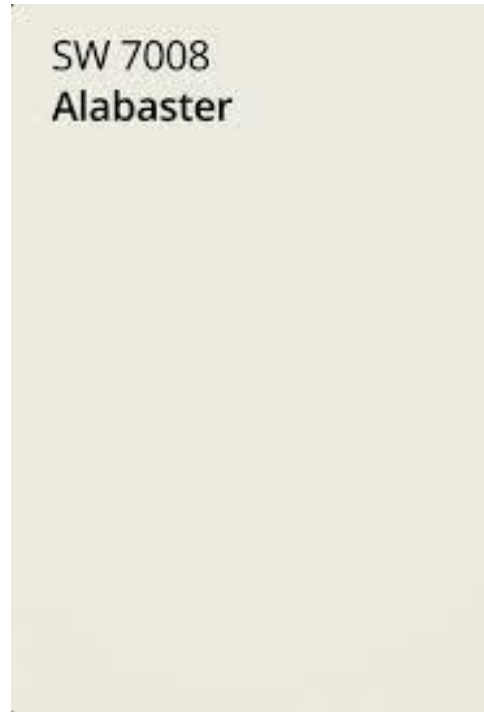


**BATHROOM FLOOR  
HEKSA SILVER**

Cresswind Twin Lakes | 118 Hartwell Court, Hoschton, GA 30548



## SHOWCASE HOME DESIGNER FEATURES MAIN LEVEL - GENERAL FINISHES



**EVP FLOORING  
POLARIS PLUS - CASTAWAY**

Cresswind Twin Lakes| 118 Hartwell Court, Hoschton, GA 30548



©2022. Prices, homesites, amenities, home designs, square footage and other information subject to errors, changes, omissions, deletions, availability, prior sales and withdrawal at any time without notice. Square footage numbers are approximate and may vary depending on the standard measurement used. Photos and/or drawings of homes may show upgraded landscaping and may not represent the lowest priced homes in the community. All renderings and floorplans in these materials are an artist's conceptual drawings and will vary from the actual plans and homes as built. CGC1509406

**KOLTERHOMES®**



## SHOWCASE HOME DESIGNER FEATURES | LIGHTING MAIN LEVEL



Cresswind Twin Lakes| 118 Hartwell Court, Hoschton, GA 30548



©2022. Prices, homesites, amenities, home designs, square footage and other information subject to errors, changes, omissions, deletions, availability, prior sales and withdrawal at any time without notice. Square footage numbers are approximate and may vary depending on the standard measurement used. Photos and/or drawings of homes may show upgraded landscaping and may not represent the lowest priced homes in the community. All renderings and floorplans in these materials are an artist's conceptual drawings and will vary from the actual plans and homes as built. CGC1509406

**KOLTERHOMES**®