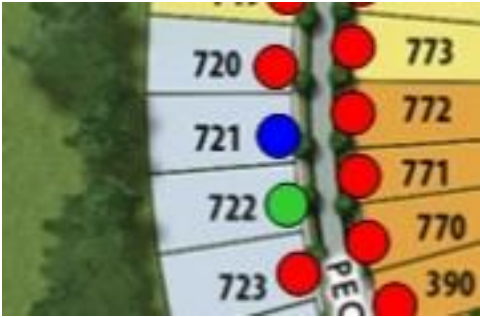


# SHOWCASE HOME | PEAR



Street Address: 202 PECKS COURT

A/C Sq. Ft.: 2,390		Price: \$
Bedrooms: 3	Bathrooms: 3	Move-In Date:

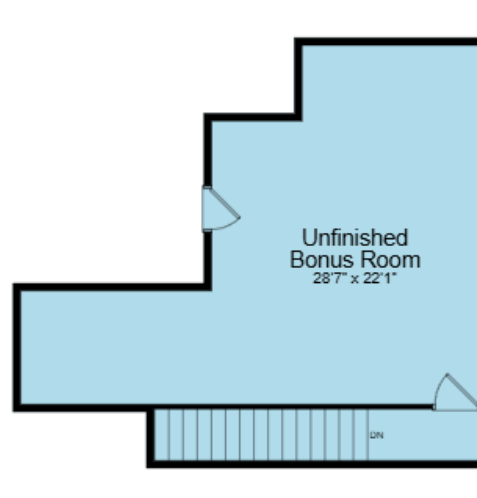
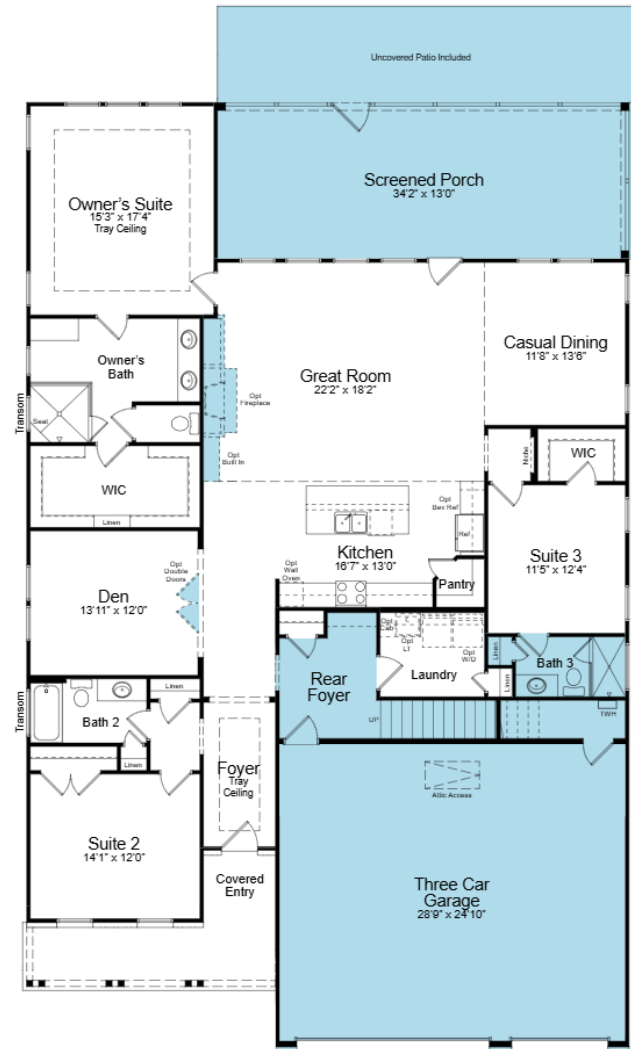


ELEVATION: BB

HOMESITE: 721

Cresswind Twin Lakes| 118 Hartwell Court, Hoschton, GA 30548





## SHOWCASE HOME FLOORPLAN

### PEAR

3 Bedroom, 3 Bath, Den, Great Room,  
Covered, Screened Lanai, 3-Car Garage and Unfinished  
Bonus

Cresswind Twin Lakes| 118 Hartwell Court, Hoschton, GA 30548



©2022. Prices, homesites, amenities, home designs, square footage and other information subject to errors, changes, omissions, deletions, availability, prior sales and withdrawal at any time without notice. Square footage numbers are approximate and may vary depending on the standard measurement used. Photos and/or drawings of homes may show upgraded landscaping and may not represent the lowest priced homes in the community. All renderings and floorplans in these materials are an artist's conceptual drawings and will vary from the actual plans and homes as built. CGC1509406

**KOLTERHOMES®**

## SHOWCASE HOME FEATURE HIGHLIGHTS

### KITCHEN DETAILS

- 36" gas 5-burner cooktop
- Chef Kitchen
- Cabinet crown molding
- Pots and Pan Drawer
- Quartz countertops (Level 3)
- EVP flooring
- Café Appliances
- Stainless Steel Single Bowl Undermount Sink

### DESIGNER FEATURES

- 4 FT. Garage Extension
- Frameless shower in owner's bath
- Laundry Room with wall cabinets and laundry sink
- Screened porch Includes 8' deep concrete patio
- 42" Direct Vent LINEAR Gas Fireplace
- Unfinished Bonus Room w/stub plumbing
- Radiant Barrier- Tech Shield

Cresswind Twin Lakes| 118 Hartwell Court, Hoschton, GA 30548



©2022. Prices, homesites, amenities, home designs, square footage and other information subject to errors, changes, omissions, deletions, availability, prior sales and withdrawal at any time without notice. Square footage numbers are approximate and may vary depending on the standard measurement used. Photos and/or drawings of homes may show upgraded landscaping and may not represent the lowest priced homes in the community. All renderings and floorplans in these materials are an artist's conceptual drawings and will vary from the actual plans and homes as built. CGC1509406

**KOLTERHOMES®**

## SHOWCASE HOME DESIGNER FEATURES | KITCHEN



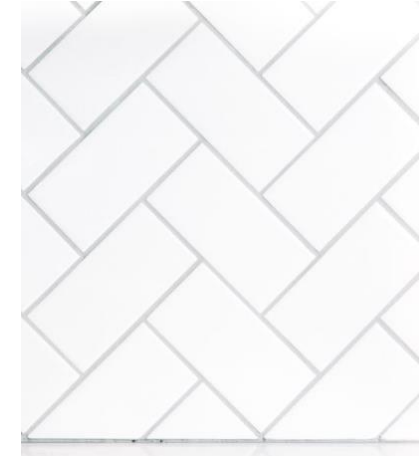
**LEVEL 4 KAYES CABINETS**  
**WHITE – PERIMETER**  
**BUCKSKIN - ISLAND**



**MOEN ALIGN**  
**SPRING PULL DOWN**



**LEVEL 3 QUARTZ COUNTERTOP**  
**LUSSO**



**CATCH ICE 3X6**  
**HERINGBONE**  
**BACKSPLASH**

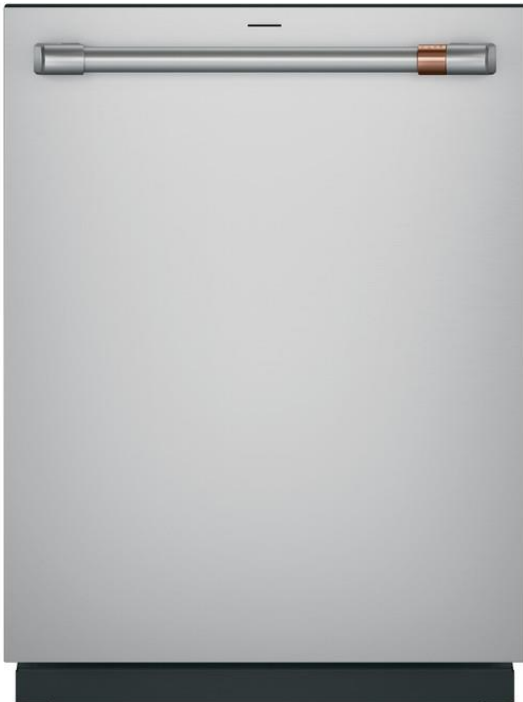


**SHAW EVP FLOORING**  
**STARTING POINT / HONEY**  
**GOLD**

Cresswind Twin Lakes| 118 Hartwell Court, Hoschton, GA 30548



## SHOWCASE HOME DESIGNER FEATURES KITCHEN APPLIANCES



Cresswind Twin Lakes| 118 Hartwell Court, Hoschton, GA 30548

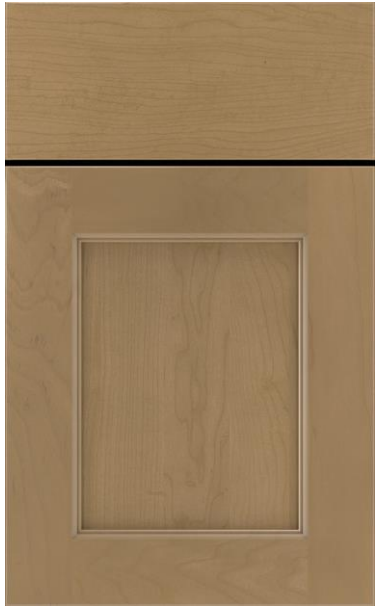


©2022. Prices, homesites, amenities, home designs, square footage and other information subject to errors, changes, omissions, deletions, availability, prior sales and withdrawal at any time without notice. Square footage numbers are approximate and may vary depending on the standard measurement used. Photos and/or drawings of homes may show upgraded landscaping and may not represent the lowest priced homes in the community. All renderings and floorplans in these materials are an artist's conceptual drawings and will vary from the actual plans and homes as built. CGC1509406

**KOLTERHOMES®**



## SHOWCASE HOME DESIGNER FEATURES | OWNERS BATH



**LEVEL 4  
CABINETS –  
KAYES  
BUCKSKIN**



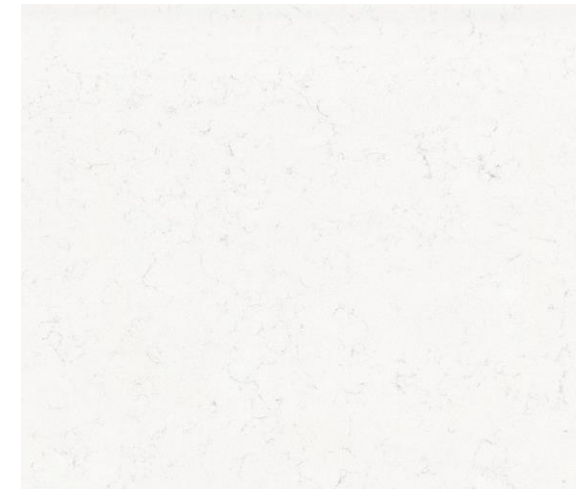
**MOEN VOSS  
BRUSHED  
NICKEL**



**NOBLEZA LUGO  
SHOWER WALLS  
(POLISHED) AND  
BATHROOM FLOOR  
(MATTE)**



**SHOWER FLOOR**



**SILESTONE  
QUARTZ-  
MIAMI VENA**

Cresswind Twin Lakes| 118 Hartwell Court, Hoschton, GA 30548



©2022. Prices, homesites, amenities, home designs, square footage and other information subject to errors, changes, omissions, deletions, availability, prior sales and withdrawal at any time without notice. Square footage numbers are approximate and may vary depending on the standard measurement used. Photos and/or drawings of homes may show upgraded landscaping and may not represent the lowest priced homes in the community. All renderings and floorplans in these materials are an artist's conceptual drawings and will vary from the actual plans and homes as built. CGC1509406

**KOLTERHOMES®**

## SHOWCASE HOME DESIGNER FEATURES | BATH 2



**LEVEL 4  
CABINETS  
KAYES WHITE**



**LUSO  
SILESTONE  
QUARTZ**



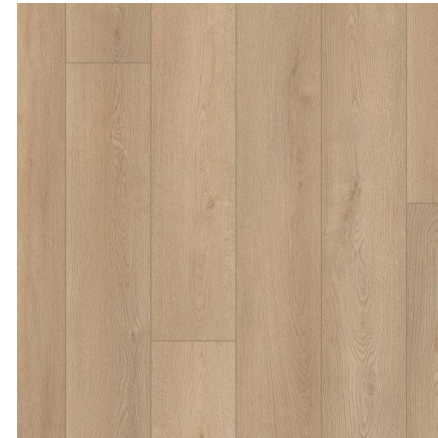
**LUSO  
SILESTONE  
QUARTZ**



**MOEN VOSS  
SINGLE LEVER  
BRUSHED  
NICKEL**



**SHOWER WALL TILE  
SOLARA FIRENZA 12X24**



**BATHROOM FLOOR  
SHAW EVP  
STARTING POINT / HONEY GOLD**

Cresswind Twin Lakes| 118 Hartwell Court, Hoschton, GA 30548



©2022. Prices, homesites, amenities, home designs, square footage and other information subject to errors, changes, omissions, deletions, availability, prior sales and withdrawal at any time without notice. Square footage numbers are approximate and may vary depending on the standard measurement used. Photos and/or drawings of homes may show upgraded landscaping and may not represent the lowest priced homes in the community. All renderings and floorplans in these materials are an artist's conceptual drawings and will vary from the actual plans and homes as built. CGC1509406

**KOLTERHOMES®**

## SHOWCASE HOME DESIGNER FEATURES | BATH 3



**LEVEL 4  
CABINETS  
KAYES  
BUCKSKIN**



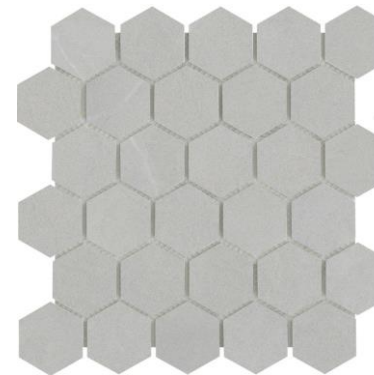
**MIAMI VENA  
SILESTONE  
QUARTZ**



**MOEN VOSS  
SINGLE LEVER  
BRUSHED  
NICKEL**



**SHOWER WALL AND BATHROOM FLOOR TILE  
SOLARA FIRENZA 12X24**



**SHOWER FLOOR**

Cresswind Twin Lakes| 118 Hartwell Court, Hoschton, GA 30548



©2022. Prices, homesites, amenities, home designs, square footage and other information subject to errors, changes, omissions, deletions, availability, prior sales and withdrawal at any time without notice. Square footage numbers are approximate and may vary depending on the standard measurement used. Photos and/or drawings of homes may show upgraded landscaping and may not represent the lowest priced homes in the community. All renderings and floorplans in these materials are an artist's conceptual drawings and will vary from the actual plans and homes as built. CGC1509406

**KOLTERHOMES®**



## SHOWCASE HOME DESIGNER FEATURES

### MAIN LEVEL - GENERAL FINISHES



**SHAW EVP FLOORING**  
**STARTING POINT / HONEY GOLD**

Cresswind Twin Lakes| 118 Hartwell Court, Hoschton, GA 30548



©2022. Prices, homesites, amenities, home designs, square footage and other information subject to errors, changes, omissions, deletions, availability, prior sales and withdrawal at any time without notice. Square footage numbers are approximate and may vary depending on the standard measurement used. Photos and/or drawings of homes may show upgraded landscaping and may not represent the lowest priced homes in the community. All renderings and floorplans in these materials are an artist's conceptual drawings and will vary from the actual plans and homes as built. CGC1509406

**KOLTERHOMES®**