

SHOWCASE HOME | FIR

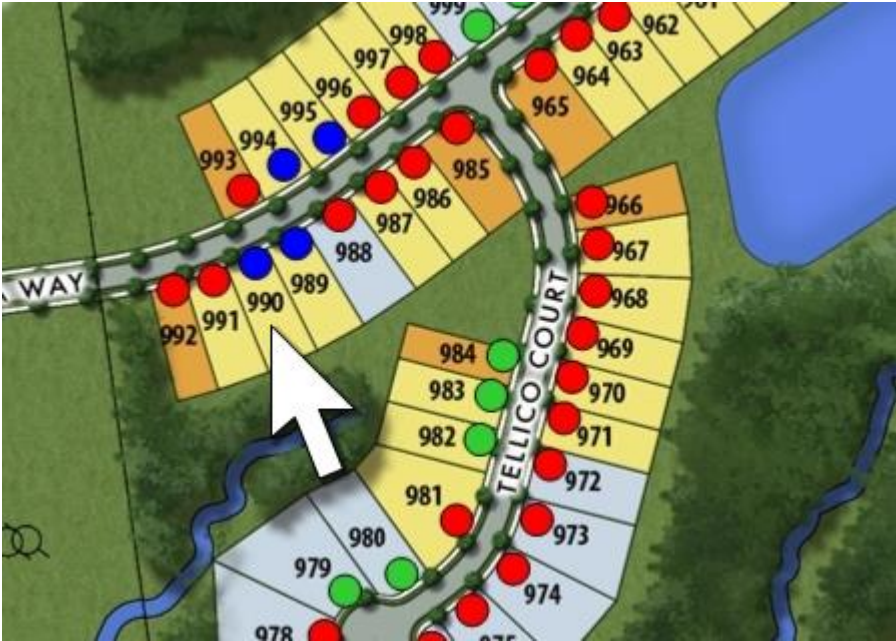


Street Address: 455 Geneva Way

A/C Sq. Ft.: 2,012		Price:
Bedrooms: 2 with Den	Bathrooms: 2	Move-In Date: August

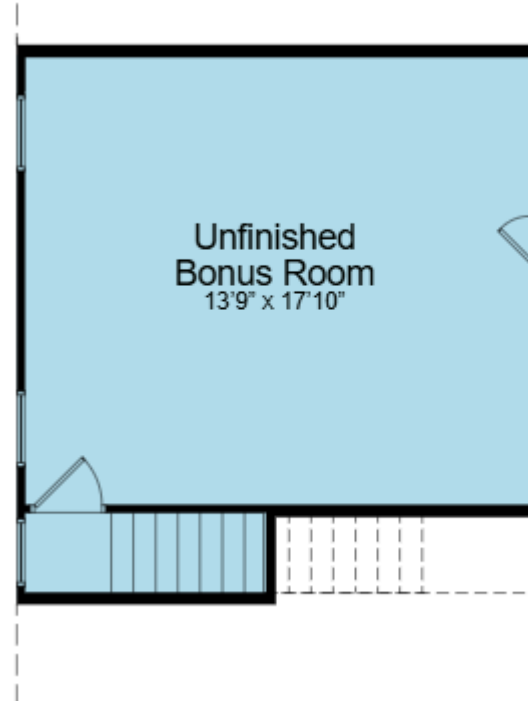
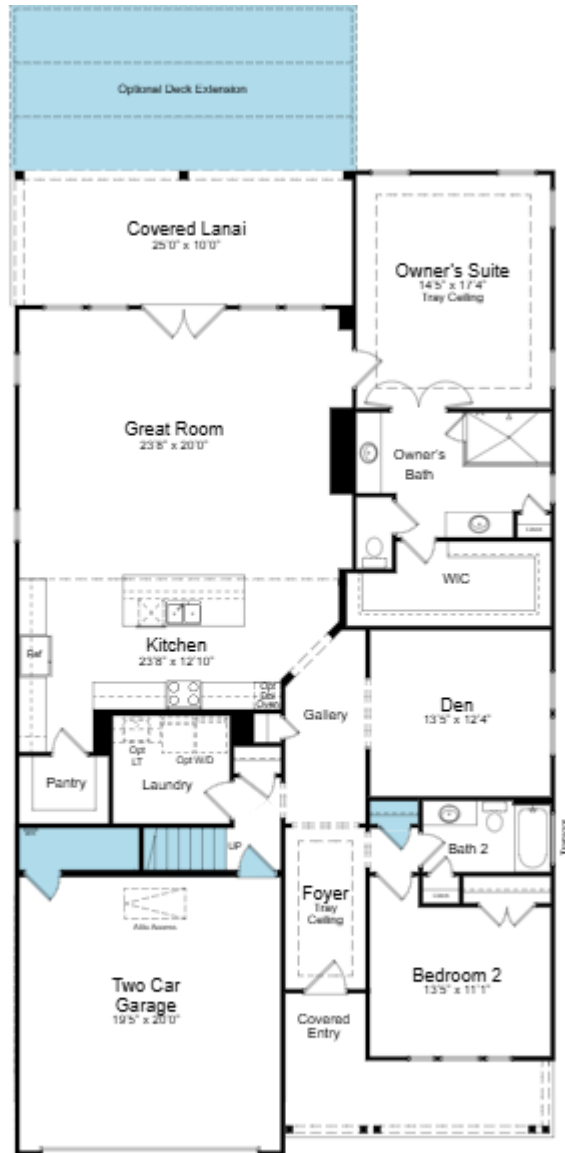


ELEVATION: BB



HOMESITE: 990

Cresswind Twin Lakes| 118 Hartwell Court, Hoschton, GA 30548



SHOWCASE HOME FLOORPLAN

FIR

2 Bedroom, 2 Bath, Den, Unfinished Bonus Room,
2-Car Garage with Garage Extension- 4 Feet

Cresswind T



SHOWCASE HOME FEATURE HIGHLIGHTS

KITCHEN DETAILS

- Café 30" Gas cooktop
- Gourmet Kitchen with Café Appliances
- 30" Wood Hood (Level 4)
- Pots and Pan Drawer
- Quartz countertops (Level 3)
- EVP flooring
- Island Peninsula Beadboard (Level 4)
- Stainless Steel Single Bowl Undermount Sink

DESIGNER FEATURES

- 4 FT. Garage Extension
- Frameless shower in owner's bath
- Laundry Room with wall cabinets and laundry sink
- Direct Vent SlimLine Gas Fireplace
- Unfinished Bonus Room w/stub plumbing
- Radiant Barrier- Tech Shield
- Oak Tread Staircase To Bonus

Cresswind Twin Lakes| 118 Hartwell Court, Hoschton, GA 30548



SHOWCASE HOME DESIGNER FEATURES | KITCHEN



**LEVEL 4 WILLET WHITE
CABINETS**



**LEVEL 3 LUSO SILESTONE
QUARTZ COUNTERTOPS**



**REWARD DOVE GL BEVEL
TILE BACKSPLASH**



H3-14 BRUSHED NICKEL



**SHAW EVP FLOORING
PROMINENCE PLUS/EXECUTIVE OAK**



**MOEN ALIGN SPOT
RESISTANT STAINLESS**

Cresswind Twin Lakes| 118 Hartwell Court, Hoschton, GA 30548



©2022. Prices, homesites, amenities, home designs, square footage and other information subject to errors, changes, omissions, deletions, availability, prior sales and withdrawal at any time without notice. Square footage numbers are approximate and may vary depending on the standard measurement used. Photos and/or drawings of homes may show upgraded landscaping and may not represent the lowest priced homes in the community. All renderings and floorplans in these materials are an artist's conceptual drawings and will vary from the actual plans and homes as built. CGC1509406

KOLTERHOMES®

SHOWCASE HOME DESIGNER FEATURES | KITCHEN APPLIANCES



Cresswind Twin Lakes| 118 Hartwell Court, Hoschton, GA 30548



©2022. Prices, homesites, amenities, home designs, square footage and other information subject to errors, changes, omissions, deletions, availability, prior sales and withdrawal at any time without notice. Square footage numbers are approximate and may vary depending on the standard measurement used. Photos and/or drawings of homes may show upgraded landscaping and may not represent the lowest priced homes in the community. All renderings and floorplans in these materials are an artist's conceptual drawings and will vary from the actual plans and homes as built. CGC1509406

KOLTERHOMES®

SHOWCASE HOME DESIGNER FEATURES | LAUNDRY



**LEVEL 4 WILLET WHITE
CABINETS**



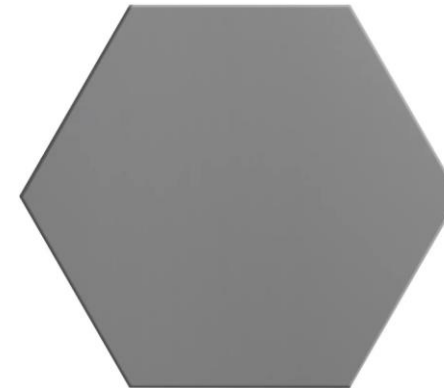
**SILESTONE BLANCO
MAPLE QUARTZ**



H3-14 BRUSHED NICKEL



**MOEN CAMERIST SPOT
RESISTANT STAINLESS**



HEKSA HEX GRAY FLOOR TILE

SHOWCASE HOME DESIGNER FEATURES | OWNERS BATH



**LEVEL 4 WILLET WHITE
CABINETS**



**LEVEL 3 LUSSO SILESTONE
QUARTZ COUNTERTOPS**



REPLAY 4-LITE



**MOEN VOSS 8" SPREAD
BRUSHED NICKEL**



**K2-13 BRUSHED NICKEL
KNOBS ON DOORS**



**H3-5 BRUSHED NICKEL
PULLS ON DRAWERS**



**NOBLEZA LUGO MT 12 X 24
BATH FLOOR**



**NOBLEZA LUGO PL 12 X 24
SHOWER WALL**



**NOBLEZA LUGO MT 2 X 4
SHOWER FLOOR**

Cresswind Twin Lakes| 118 Hartwell Court, Hoschton, GA 30548



©2022. Prices, homesites, amenities, home designs, square footage and other information subject to errors, changes, omissions, deletions, availability, prior sales and withdrawal at any time without notice. Square footage numbers are approximate and may vary depending on the standard measurement used. Photos and/or drawings of homes may show upgraded landscaping and may not represent the lowest priced homes in the community. All renderings and floorplans in these materials are an artist's conceptual drawings and will vary from the actual plans and homes as built. CGC1509406

KOLTERHOMES®

SHOWCASE HOME DESIGNER FEATURES | BATH 2



**LEVEL 4 WILLET WHITE
CABINETS**



**LEVEL 3 LUSO SILESTONE
QUARTZ COUNTERTOPS**



REPLAY 3-LITE



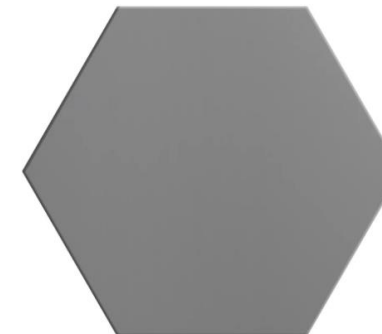
**MOEN VOSS SINGLE
BRUSHED NICKEL**



H3-5 BRUSHED NICKEL



**CATCH ICE GL 4 X 16
TUB WALL**



**HEKSA HEX GRAY
FLOOR TILE**

Cresswind Twin Lakes| 118 Hartwell Court, Hoschton, GA 30548



©2022. Prices, homesites, amenities, home designs, square footage and other information subject to errors, changes, omissions, deletions, availability, prior sales and withdrawal at any time without notice. Square footage numbers are approximate and may vary depending on the standard measurement used. Photos and/or drawings of homes may show upgraded landscaping and may not represent the lowest priced homes in the community. All renderings and floorplans in these materials are an artist's conceptual drawings and will vary from the actual plans and homes as built. CGC1509406

KOLTERHOMES®

SHOWCASE HOME DESIGNER FEATURES

MAIN LEVEL - GENERAL FINISHES



SHERWIN WILLIAMS WALL PAINT
SW9166 DRIFT OF MIST



SHAW EVP FLOORING
SUPINO HD / HONEYCOMB

Cresswind Twin Lakes| 118 Hartwell Court, Hoschton, GA 30548



©2022. Prices, homesites, amenities, home designs, square footage and other information subject to errors, changes, omissions, deletions, availability, prior sales and withdrawal at any time without notice. Square footage numbers are approximate and may vary depending on the standard measurement used. Photos and/or drawings of homes may show upgraded landscaping and may not represent the lowest priced homes in the community. All renderings and floorplans in these materials are an artist's conceptual drawings and will vary from the actual plans and homes as built. CGC1509406

KOLTERHOMES®