

# SHOWCASE HOME | CEDAR

# CRESSWIND®

Street Address: 203 Bear Way Hoschton GA 30548

A/C Sq. Ft.: 1713

Price:

Bedrooms: 2

Bathrooms: 2

Move-In  
Date: June



**ELEVATION: BH**

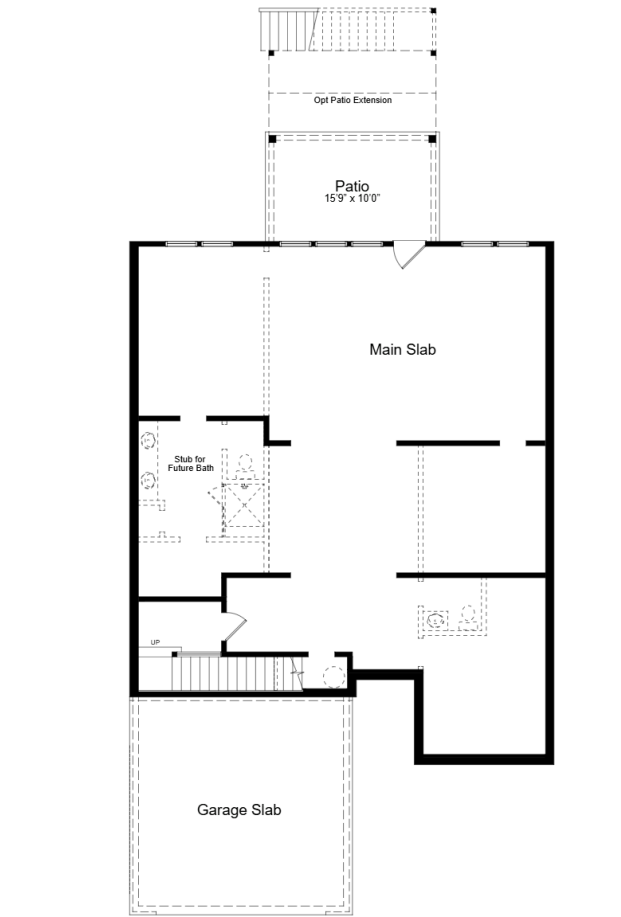
**HOMESITE: 744**

Cresswind Twin Lakes | 118 Hartwell Court, Hoschton, GA 30548



©2022. Prices, homesites, amenities, home designs, square footage and other information subject to errors, changes, omissions, deletions, availability, prior sales and withdrawal at any time without notice. Square footage numbers are approximate and may vary depending on the standard measurement used. Photos and/or drawings of homes may show upgraded landscaping and may not represent the lowest priced homes in the community. All renderings and floorplans in these materials are an artist's conceptual drawings and will vary from the actual plans and homes as built. CGC1509406

**KOLTERHOMES®**



## SHOWCASE HOME FLOORPLAN

### CEDAR

2 Bedroom, 2 Bath, Den, Great Room, Sunroom, Covered Deck, 2-Car Garage, Golf Cart Garage and Unfinished Basement

Cresswind Twin Lakes | 118 Hartwell Court, Hoschton, GA 30548



## SHOWCASE HOME FEATURE HIGHLIGHTS

### KITCHEN DETAILS

- Gourmet Kitchen with Level 4 Cabinets
- 30" Gas Cooktop with 5 Burners
- Matte Black cabinet pulls
- Level 3 Quartz countertops
- EVP Flooring
- 30" Café Hood – Stainless Steel
- Stainless Steel Single Bowl Undermount Sink

### DESIGNER FEATURES

- 4 FT. garage extension
- Frameless shower in owner's bath
- Laundry Room with wall cabinets and Laundry sink
- Direct vent fireplace
- Unfinished Basement
- Golf Cart Garage
- Tile to Ceiling in Owner's Shower

Cresswind Twin Lakes | 118 Hartwell Court, Hoschton, GA 30548



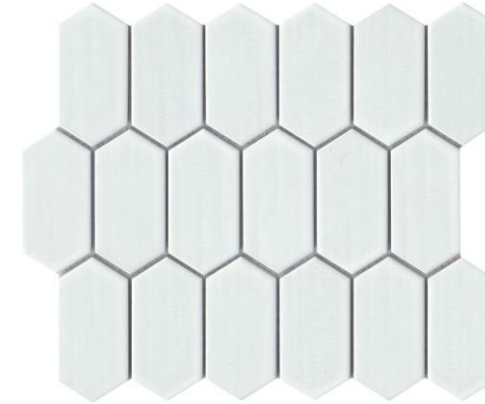
## SHOWCASE HOME DESIGNER FEATURES | KITCHEN



**LEVEL 4 INGALIS CABINETS  
WHITE**



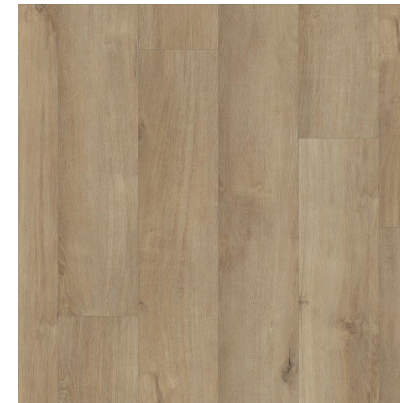
**LEVEL 3 QUARTZ COUNTERTOP  
BLANCO ORION**



**OMNI WHITE PICKET  
BACKSPLASH**



**MOEN ALIGN SPRING PULLDOWN**

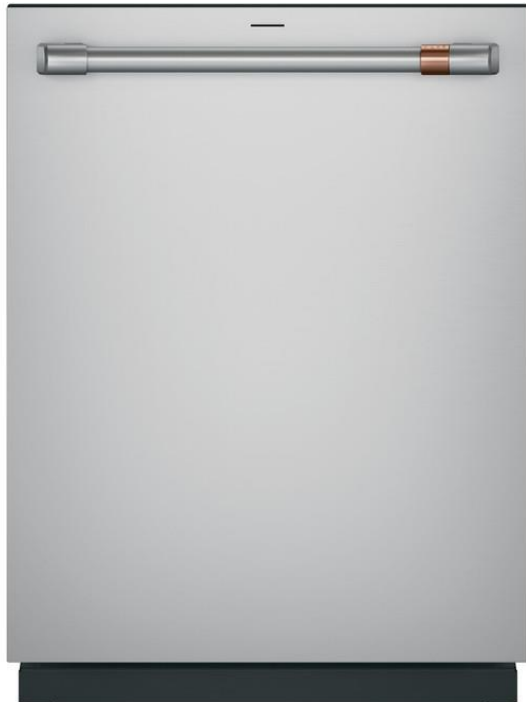


**SHAW EVP FLOORING  
POLARIS PLUS / MARINA**

Cresswind Twin Lakes | 118 Hartwell Court, Hoschton, GA 30548



## SHOWCASE HOME DESIGNER FEATURES | KITCHEN APPLIANCES



Cresswind Twin Lakes| 118 Hartwell Court, Hoschton, GA 30548



©2022. Prices, homesites, amenities, home designs, square footage and other information subject to errors, changes, omissions, deletions, availability, prior sales and withdrawal at any time without notice. Square footage numbers are approximate and may vary depending on the standard measurement used. Photos and/or drawings of homes may show upgraded landscaping and may not represent the lowest priced homes in the community. All renderings and floorplans in these materials are an artist's conceptual drawings and will vary from the actual plans and homes as built. CGC1509406

**KOLTERHOMES**®

# SHOWCASE HOME DESIGNER FEATURES | OWNERS BATH



**LEVEL 3  
CABINETS –  
LORMAND  
MAPLE ICY  
AVALANCHE**



**MOEN ALIGN  
MATTE BLACK**



**CONTESSA ORO MATTE  
SHOWER WALLS AND  
BATHROOM FLOOR**



**SILESTONE  
QUARTZ-  
MIAMI VENA**



**SHOWER FLOOR**

Cresswind Twin Lakes| 118 Hartwell Court, Hoschton, GA 30548



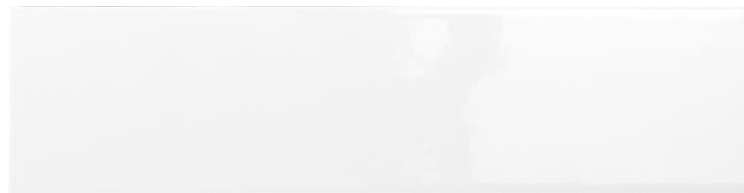
## SHOWCASE HOME DESIGNER FEATURES | BATH 2



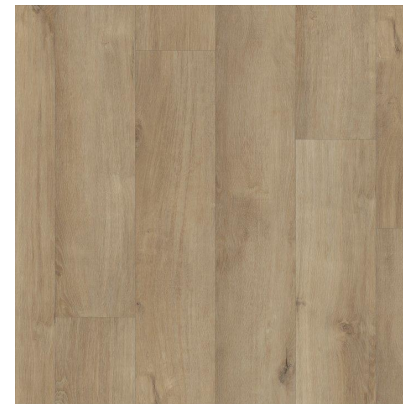
**LEVEL 3  
CABINETS  
LORMAND  
MAPLE ICY  
AVALANCHE**



**MIAMI VENA  
SILESTONE  
QUARTZ**



**SHOWER WALL TILE  
CATCH GLOSSY 4X16**



**BATHROOM FLOOR  
POLARIS PLUS / MARINA**



**MOEN ALIGN  
SINGLE LEVER  
MATTE BLACK**

Cresswind Twin Lakes | 118 Hartwell Court, Hoschton, GA 30548



## SHOWCASE HOME DESIGNER FEATURES MAIN LEVEL - GENERAL FINISHES



**SHAW EVP FLOORING  
POLARIS PLUS / MARINA**

Cresswind Twin Lakes | 118 Hartwell Court, Hoschton, GA 30548





## SHOWCASE HOME DESIGNER FEATURES | LIGHTING MAIN LEVEL



Cresswind Twin Lakes | 118 Hartwell Court, Hoschton, GA 30548



©2022. Prices, homesites, amenities, home designs, square footage and other information subject to errors, changes, omissions, deletions, availability, prior sales and withdrawal at any time without notice. Square footage numbers are approximate and may vary depending on the standard measurement used. Photos and/or drawings of homes may show upgraded landscaping and may not represent the lowest priced homes in the community. All renderings and floorplans in these materials are an artist's conceptual drawings and will vary from the actual plans and homes as built. CGC1509406

**KOLTERHOMES**®