

SHOWCASE HOME | FIR

Street Address: 28 FLORENCE LANE

A/C Sq. Ft.: 2,464

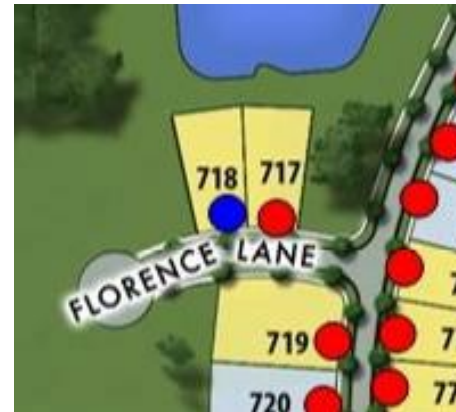
Bedrooms: 2 plus Den

Bathrooms: 3

CRESSWIND®



ELEVATION: CH



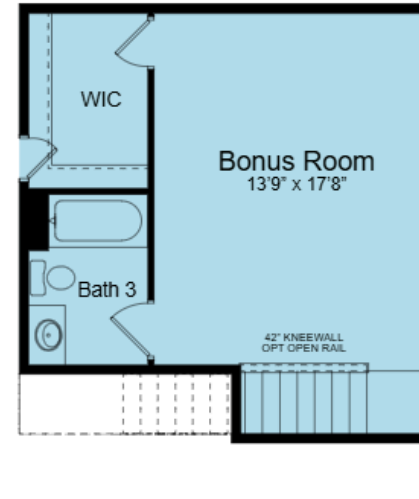
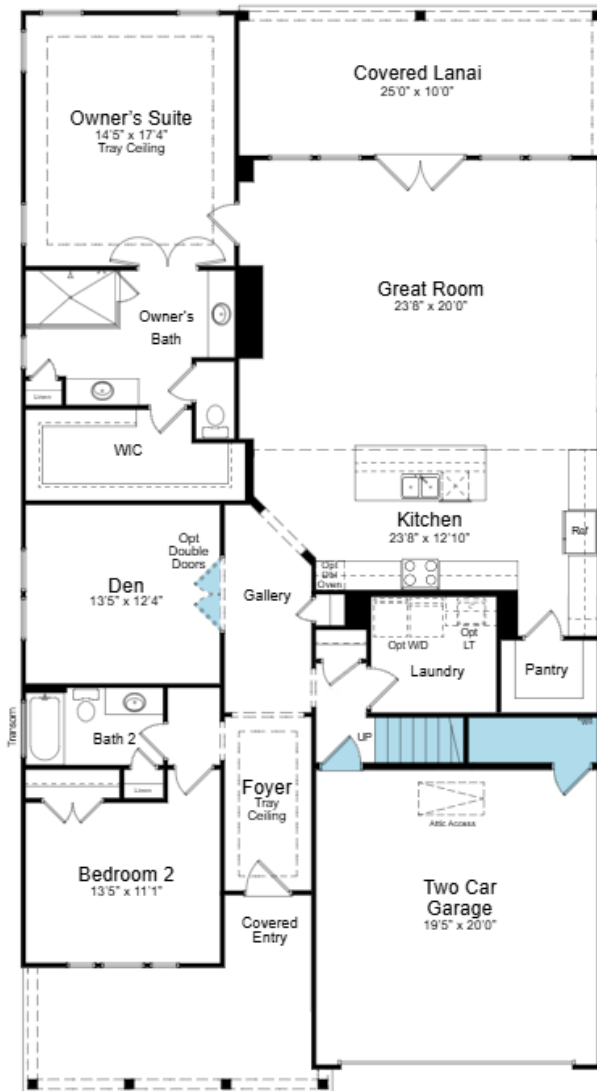
HOMESITE: 718

Cresswind Twin Lakes| 118 Hartwell Court, Hoschton, GA 30548



© 2022. Prices, homesites, amenities, home designs, square footage and other information subject to errors, changes, omissions, deletions, availability, prior sales and withdrawal at any time without notice. Square footage numbers are approximate and may vary depending on the standard measurement used. Photos and/or drawings of homes may show upgraded landscaping and may not represent the lowest priced homes in the community. All renderings and floorplans in these materials are an artist's conceptual drawings and will vary from the actual plans and homes as built. CGC1509406

KOLTERHOMES®



SHOWCASE HOME FLOORPLAN

FIR

2 Bedroom, 3 Bath, Den, Great Room,
2-Car Garage and Finished Bonus Room

Cresswind Twin Lakes| 118 Hartwell Court, Hoschton, GA 30548



©2022. Prices, homesites, amenities, home designs, square footage and other information subject to errors, changes, omissions, deletions, availability, prior sales and withdrawal at any time without notice. Square footage numbers are approximate and may vary depending on the standard measurement used. Photos and/or drawings of homes may show upgraded landscaping and may not represent the lowest priced homes in the community. All renderings and floorplans in these materials are an artist's conceptual drawings and will vary from the actual plans and homes as built. CGC1509406

KOLTERHOMES®

SHOWCASE HOME FEATURE HIGHLIGHTS

KITCHEN DETAILS

- 30" gas 5-burner cooktop
- 30" Convection wall oven
- Cabinet crown molding
- Quartz countertops
- EVP flooring
- Stainless Steel Single Bowl Undermount Sink

DESIGNER FEATURES

- EVP Flooring throughout the main level of home
- Frameless shower in owner's bath
- Quartz countertops in Kitchen and all Bathrooms
- Brushed Nickle Upgraded Faucets in Kitchen and Bathrooms
- Laundry Room with wall cabinets and laundry sink
- Finished Bonus Room with bath

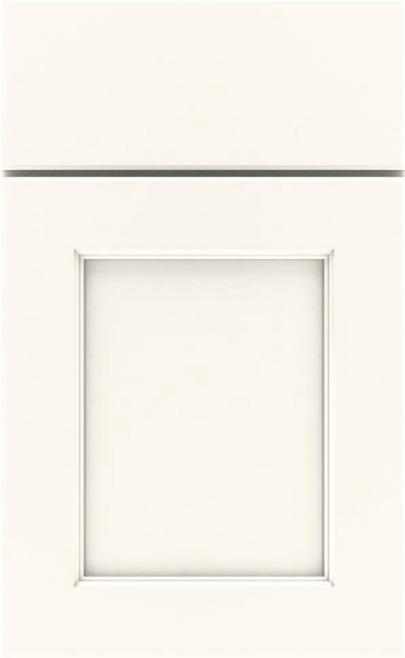
Cresswind Twin Lakes| 118 Hartwell Court, Hoschton, GA 30548



©2022. Prices, homesites, amenities, home designs, square footage and other information subject to errors, changes, omissions, deletions, availability, prior sales and withdrawal at any time without notice. Square footage numbers are approximate and may vary depending on the standard measurement used. Photos and/or drawings of homes may show upgraded landscaping and may not represent the lowest priced homes in the community. All renderings and floorplans in these materials are an artist's conceptual drawings and will vary from the actual plans and homes as built. CGC1509406

KOLTERHOMES®

SHOWCASE HOME DESIGNER FEATURES | KITCHEN



**LEVEL 4 WILLET CABINETS
WHITE**



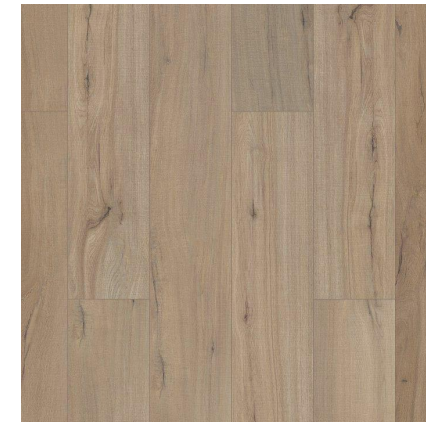
**SILESTONE QUARTZ
COUNTERTOP
DESERT SILVER**



**MOEN ARBOR
SPOT RESISTANT STAINLESS FAUCET**



**3x12 CRAFT WHITE
BACKSPLASH**



**SHAW EVP FLOORING
POLARIS PLUS / DRIFTWOOD**

Cresswind Twin Lakes | 118 Hartwell Court, Hoschton, GA 30548

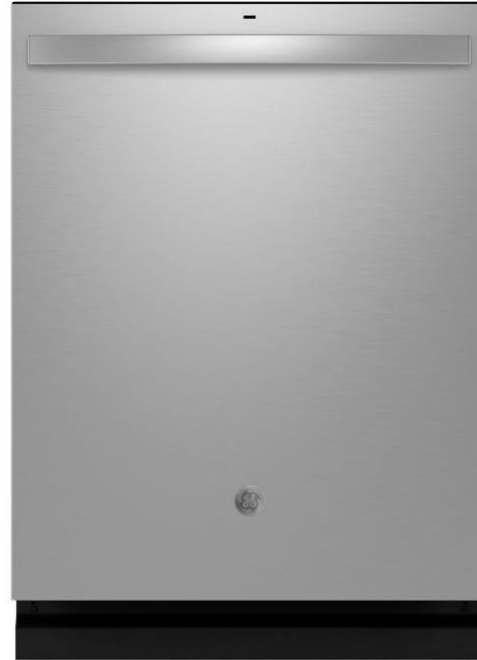


©2022. Prices, homesites, amenities, home designs, square footage and other information subject to errors, changes, omissions, deletions, availability, prior sales and withdrawal at any time without notice. Square footage numbers are approximate and may vary depending on the standard measurement used. Photos and/or drawings of homes may show upgraded landscaping and may not represent the lowest priced homes in the community. All renderings and floorplans in these materials are an artist's conceptual drawings and will vary from the actual plans and homes as built. CGC1509406

KOLTERHOMES®

FEATURES | KITCHEN APPLIANCES

Homesite: 718



Cresswind Twin Lakes| 118 Hartwell Court, Hoschton, GA 30548

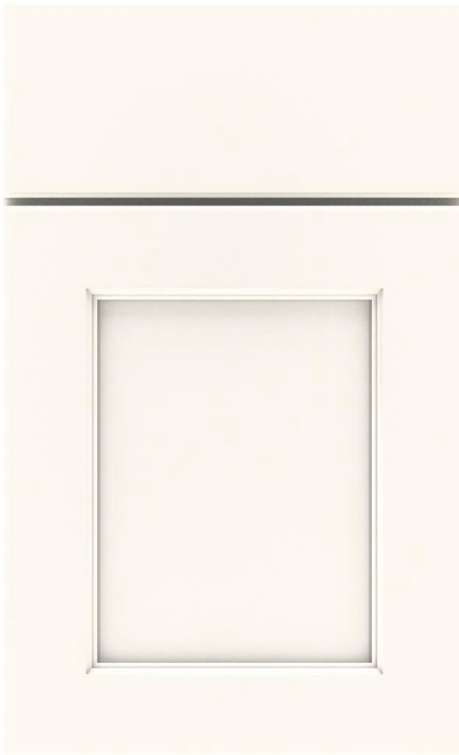


©2022. Prices, homesites, amenities, home designs, square footage and other information subject to errors, changes, omissions, deletions, availability, prior sales and withdrawal at any time without notice. Square footage numbers are approximate and may vary depending on the standard measurement used. Photos and/or drawings of homes may show upgraded landscaping and may not represent the lowest priced homes in the community. All renderings and floorplans in these materials are an artist's conceptual drawings and will vary from the actual plans and homes as built. CGC1509406

KOLTERHOMES®

SHOWCASE HOME DESIGNER FEATURES | OWNERS BATH

**LEVEL 4
CABINETS
WILLET
WHITE**



**PORTO WHITE
SHOWER WALLS
(POLISHED) AND(MATTE)
BATHROOM FLOOR**

**SILESTONE
QUARTZ-
DESERT SILVER**

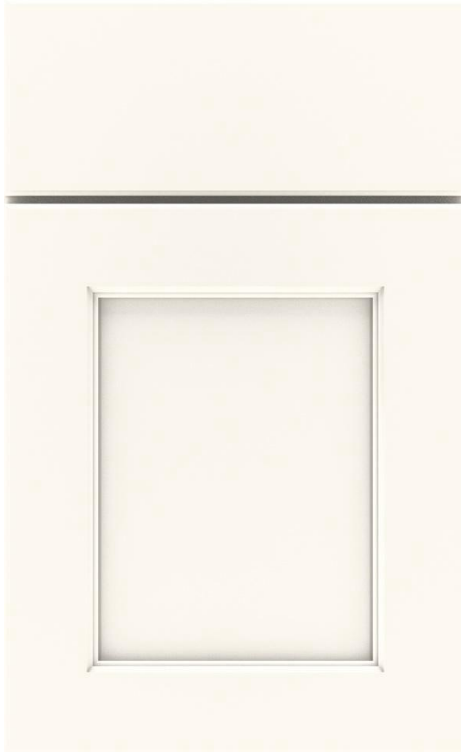
Cresswind Twin Lakes| 118 Hartwell Court, Hoschton, GA 30548



©2022. Prices, homesites, amenities, home designs, square footage and other information subject to errors, changes, omissions, deletions, availability, prior sales and withdrawal at any time without notice. Square footage numbers are approximate and may vary depending on the standard measurement used. Photos and/or drawings of homes may show upgraded landscaping and may not represent the lowest priced homes in the community. All renderings and floorplans in these materials are an artist's conceptual drawings and will vary from the actual plans and homes as built. CGC1509406

KOLTERHOMES®

SHOWCASE HOME DESIGNER FEATURES | BATH 2



**LEVEL 4
CABINETS
WILLET
WHITE**



**DESERT SILVER
SILESTONE
QUARTZ**



**PORTO WHITE SHOWER WALL AND BATHROOM
FLOOR**



**MOEN VOSS
SINGLE LEVER
BRUSHED
NICKEL**

Cresswind Twin Lakes| 118 Hartwell Court, Hoschton, GA 30548



©2022. Prices, homesites, amenities, home designs, square footage and other information subject to errors, changes, omissions, deletions, availability, prior sales and withdrawal at any time without notice. Square footage numbers are approximate and may vary depending on the standard measurement used. Photos and/or drawings of homes may show upgraded landscaping and may not represent the lowest priced homes in the community. All renderings and floorplans in these materials are an artist's conceptual drawings and will vary from the actual plans and homes as built. CGC1509406

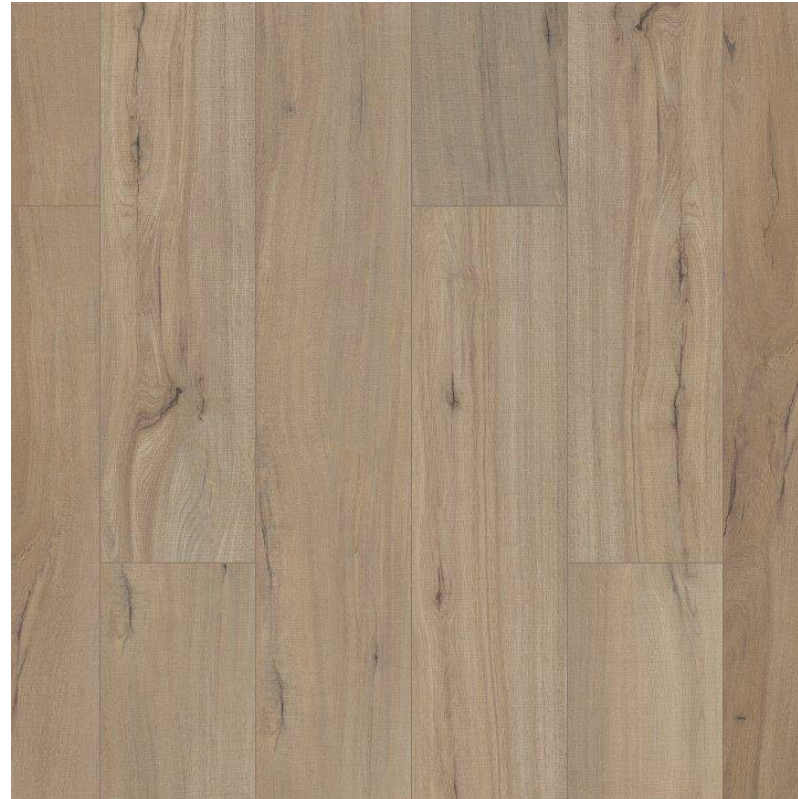
KOLTERHOMES®

SHOWCASE HOME DESIGNER FEATURES MAIN LEVEL - GENERAL FINISHES



SW 9166

Drift of Mist



**SHAW EVP FLOORING
POLARIS PLUS / DRIFTWOOD**

Cresswind Twin Lakes| 118 Hartwell Court, Hoschton, GA 30548



©2022. Prices, homesites, amenities, home designs, square footage and other information subject to errors, changes, omissions, deletions, availability, prior sales and withdrawal at any time without notice. Square footage numbers are approximate and may vary depending on the standard measurement used. Photos and/or drawings of homes may show upgraded landscaping and may not represent the lowest priced homes in the community. All renderings and floorplans in these materials are an artist's conceptual drawings and will vary from the actual plans and homes as built. CGC1509406

KOLTERHOMES®