

SHOWCASE HOME | HAZEL



Street Address: 21 HARTWELL COURT

A/C Sq. Ft.: 2,167

Bedrooms: 3

Bathrooms: 3

Move-In Date:



ELEVATION: BS

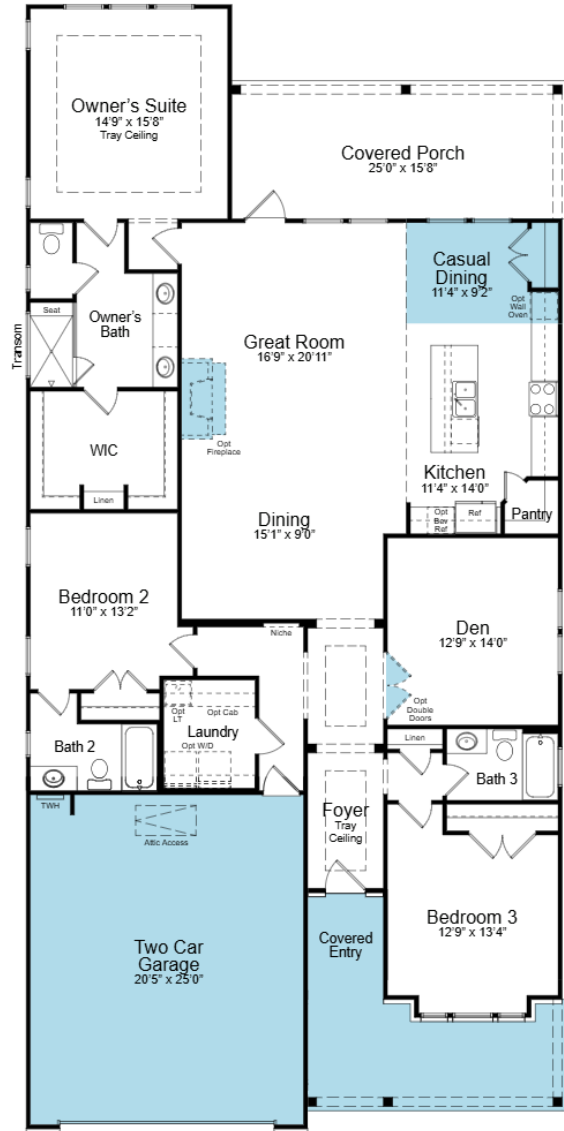
HOMESITE: 4.0613

Cresswind Twin Lakes| 118 Hartwell Court, Hoschton, GA 30548



© 2022. Prices, homesites, amenities, home designs, square footage and other information subject to errors, changes, omissions, deletions, availability, prior sales and withdrawal at any time without notice. Square footage numbers are approximate and may vary depending on the standard measurement used. Photos and/or drawings of homes may show upgraded landscaping and may not represent the lowest priced homes in the community. All renderings and floorplans in these materials are an artist's conceptual drawings and will vary from the actual plans and homes as built. CGC1509406

KOLTERHOMES®



SHOWCASE HOME FLOORPLAN

HAZEL

3 Bedroom, 3 Bath, Den, Great Room, Casual Dining, Covered Screened Lanai, Two-Car Garage, Extended Front Porch

Cresswind Twin Lakes| 118 Hartwell Court, Hoschton, GA 30548



SHOWCASE HOME FEATURE HIGHLIGHTS

KITCHEN DETAILS

- 30" gas 5-burner cooktop
- Gourmet Kitchen
- Cabinet crown molding
- Pots and Pan Drawer
- Quartz countertops (Level 3)
- EVP flooring
- GE Appliances

DESIGNER FEATURES

- 4 FT. Garage Extension
- Frameless shower in owner's bath
- Laundry Room with wall cabinets and laundry sink
- Screened porch Includes 8' deep concrete patio
- 42" Direct Vent LINEAR Gas Fireplace

Cresswind Twin Lakes| 118 Hartwell Court, Hoschton, GA 30548



©2022. Prices, homesites, amenities, home designs, square footage and other information subject to errors, changes, omissions, deletions, availability, prior sales and withdrawal at any time without notice. Square footage numbers are approximate and may vary depending on the standard measurement used. Photos and/or drawings of homes may show upgraded landscaping and may not represent the lowest priced homes in the community. All renderings and floorplans in these materials are an artist's conceptual drawings and will vary from the actual plans and homes as built. CGC1509406

KOLTERHOMES®

SHOWCASE HOME DESIGNER FEATURES | KITCHEN



**LEVEL 4 INGALIS STEAM
CABINETS/PERIMETER
COASTLINE/ISLAND**



**LEVEL 3 QUARTZ COUNTERTOP
LUSSO**



**H3-7 MATTE BLACK
PULLS ON DOORS**



**H2-13 MATTE BLACK
KNOBS ON DRAWERS**



**ANITIGO VANILLE 2 X 5
TILE BACKSPLASH**



**SHAW EVP FLOORING
STARTING POINT/HONEY
GOLD**

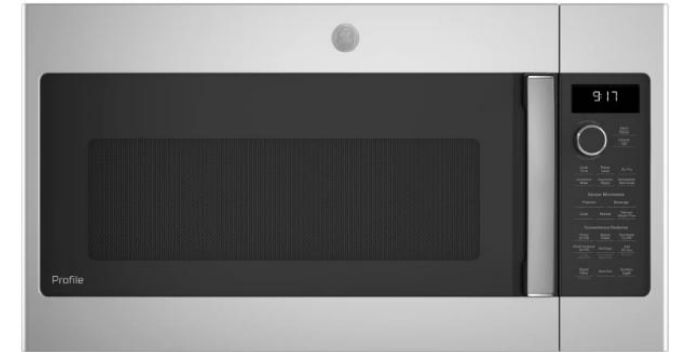


**MOEN ARBOR
MATTE BLACK**

Cresswind Twin Lakes| 118 Hartwell Court, Hoschton, GA 30548



SHOWCASE HOME DESIGNER FEATURES | KITCHEN APPLIANCES



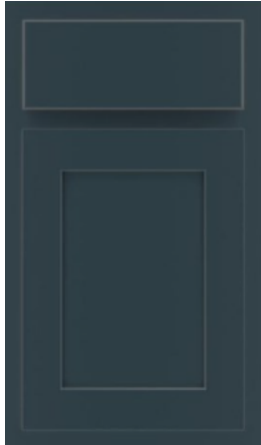
Cresswind Twin Lakes| 118 Hartwell Court, Hoschton, GA 30548



©2022. Prices, homesites, amenities, home designs, square footage and other information subject to errors, changes, omissions, deletions, availability, prior sales and withdrawal at any time without notice. Square footage numbers are approximate and may vary depending on the standard measurement used. Photos and/or drawings of homes may show upgraded landscaping and may not represent the lowest priced homes in the community. All renderings and floorplans in these materials are an artist's conceptual drawings and will vary from the actual plans and homes as built. CGC1509406

KOLTERHOMES®

SHOWCASE HOME DESIGNER FEATURES | OWNERS BATH



**LEVEL 3 LORMAND
MARITIME CABINETS**



**LEVEL 1 MIAMI VENA
QUARTZ COUNTERTOP**



H3-14 CHROME



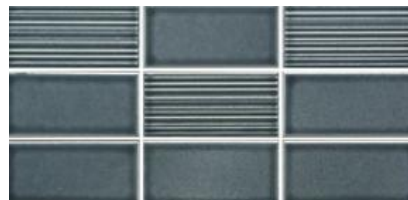
K2-9 CHROME



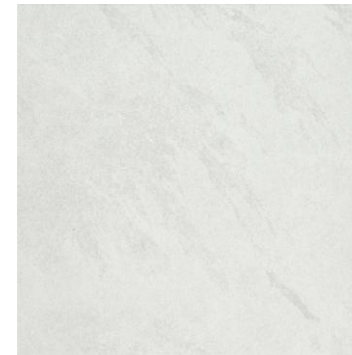
**MOEN WYNFORD
SINGLE CHROME**



**BROOK II WHITE 13 X 13
BATH FLOOR**



**NAGARA NAVY 2 X 4
SHOWER ACCENT BAND**



**BROOK II WHITE 2 X 2
SHOWER FLOOR**



**BROOK II WHITE 12 X 24
SHOWER WALL**

Cresswind Twin Lakes| 118 Hartwell Court, Hoschton, GA 30548



©2022. Prices, homesites, amenities, home designs, square footage and other information subject to errors, changes, omissions, deletions, availability, prior sales and withdrawal at any time without notice. Square footage numbers are approximate and may vary depending on the standard measurement used. Photos and/or drawings of homes may show upgraded landscaping and may not represent the lowest priced homes in the community. All renderings and floorplans in these materials are an artist's conceptual drawings and will vary from the actual plans and homes as built. CGC1509406

KOLTERHOMES®

SHOWCASE HOME DESIGNER FEATURES | LAUNDRY



**SINCLAIR/QUILL
CABINETS**



**SILESTONE BLANCO
MAPLE QUARTZ**



**H3-2 BRUSHED NICKEL
PULL ON DOORS**



**BROOK II CREAM 13 X 13
FLOOR TILE**

SHOWCASE HOME DESIGNER FEATURES | BATH 2



**LEVEL 3 LORMAND
RETREAT CABINETS**



**LEVEL 1 MIAMI VENA
QUARTZ COUNTERTOP**



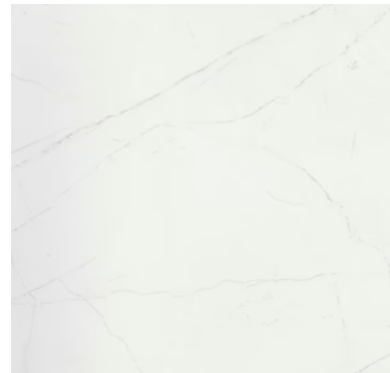
H3-14 CHROME



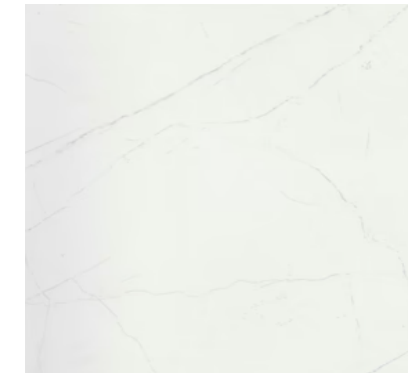
K2-9 CHROME



**MOEN WYNFORD
SINGLE CHROME**



**SOLARA CABRIO 12 X 24
BATH FLOOR**



**SOLARA CABRIO 12 X 24
TUB WALL**

Cresswind Twin Lakes| 118 Hartwell Court, Hoschton, GA 30548



©2022. Prices, homesites, amenities, home designs, square footage and other information subject to errors, changes, omissions, deletions, availability, prior sales and withdrawal at any time without notice. Square footage numbers are approximate and may vary depending on the standard measurement used. Photos and/or drawings of homes may show upgraded landscaping and may not represent the lowest priced homes in the community. All renderings and floorplans in these materials are an artist's conceptual drawings and will vary from the actual plans and homes as built. CGC1509406

KOLTERHOMES®

SHOWCASE HOME DESIGNER FEATURES | BATH 3



**LEVEL 3 LORMAND
COASTLINE CABINETS**



**LEVEL 3 LUSSO
QUARTZ COUNTERTOP**



H3-14 CHROME



K2-9 CHROME



**MOEN WYNFORD
SINGLE CHROME**



**NOBLEZA LUGO MATTE
12 X 24 BATH FLOOR**



**NOBLEZA LUGO MATTE
12 X 24 SHOWER WALL**

Cresswind Twin Lakes| 118 Hartwell Court, Hoschton, GA 30548

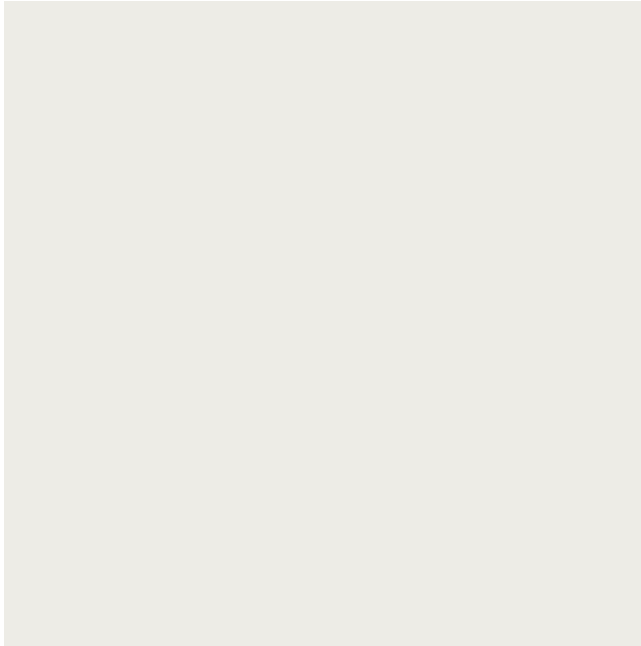


©2022. Prices, homesites, amenities, home designs, square footage and other information subject to errors, changes, omissions, deletions, availability, prior sales and withdrawal at any time without notice. Square footage numbers are approximate and may vary depending on the standard measurement used. Photos and/or drawings of homes may show upgraded landscaping and may not represent the lowest priced homes in the community. All renderings and floorplans in these materials are an artist's conceptual drawings and will vary from the actual plans and homes as built. CGC1509406

KOLTERHOMES®

SHOWCASE HOME DESIGNER FEATURES

MAIN LEVEL - GENERAL FINISHES



**SHERWIN WILLIAMS WALL PAINT
SW6166 DRIFT OF MIST**



**FIREPLACE SURROUND
STERLINA SILVER 12 X 24 TILE**



**SHAW EVP FLOORING
STARTING POINT/HONEY GOLD**

Cresswind Twin Lakes| 118 Hartwell Court, Hoschton, GA 30548



©2022. Prices, homesites, amenities, home designs, square footage and other information subject to errors, changes, omissions, deletions, availability, prior sales and withdrawal at any time without notice. Square footage numbers are approximate and may vary depending on the standard measurement used. Photos and/or drawings of homes may show upgraded landscaping and may not represent the lowest priced homes in the community. All renderings and floorplans in these materials are an artist's conceptual drawings and will vary from the actual plans and homes as built. CGC1509406

KOLTERHOMES®