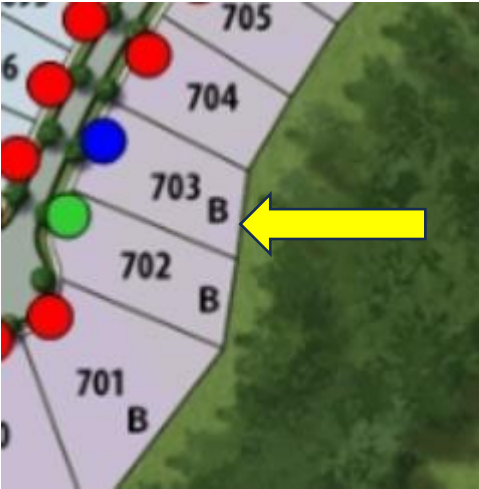


# SHOWCASE HOME | ROSEWOOD



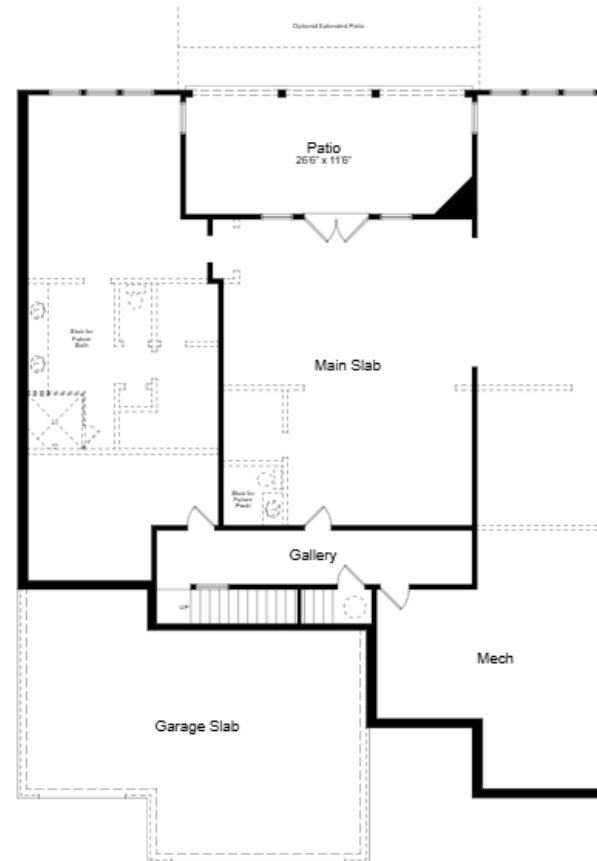
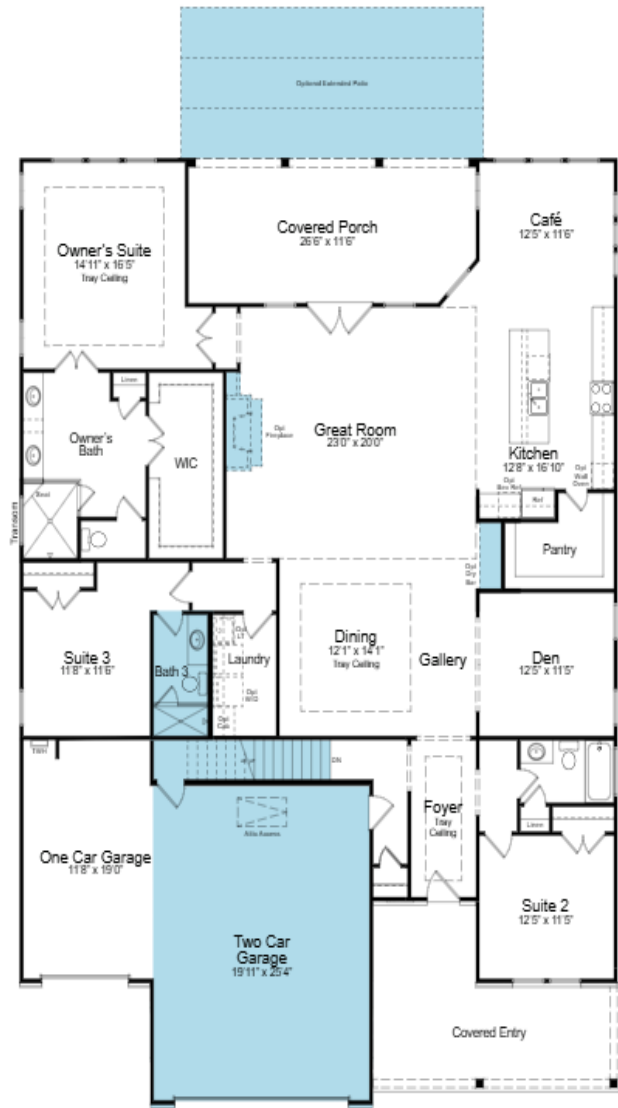
Street Address: 339 Conway Trail		
A/C Sq. Ft.:	2,600	Price: \$
Bedrooms:	3	Move-In Date: September
Bathrooms:	3	



ELEVATION: CH

HOMESITE: 5.0703

Cresswind Twin Lakes| 118 Hartwell Court, Hoschton, GA 30548



## SHOWCASE HOME FLOORPLAN

### ROSEWOOD

3 Bedroom, 3 Bath, Den, Great Room,  
Extended Covered Deck, 3-Car Garage and Unfinished  
Basement

Cresswind Twin Lakes| 118 Hartwell Court, Hoschton, GA 30548



## SHOWCASE HOME FEATURE HIGHLIGHTS

### KITCHEN DETAILS

- 36" gas 5-burner cooktop
- Chef Kitchen
- Kitchen Wood Hood 36" (Level 4)
- Pots and Pan Drawer
- Quartz countertops (Level 4)
- EVP flooring
- Café Appliances
- Stainless Steel Single Bowl Undermount Sink

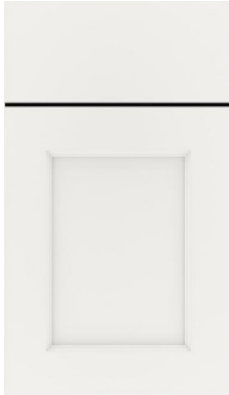
### DESIGNER FEATURES

- 4 FT. Garage Extension
- Frameless shower in owner's bath
- Laundry Room with wall cabinets and laundry sink
- Tub to Shower Conversion in Bath #3
- 42" Direct Vent LINEAR Gas Fireplace
- Raised Hearth Brick Fireplace Surround w/Floating Mantel
- Oak Tread Staircase To Unfinished Basement
- Radiant Barrier- Tech Shield

Cresswind Twin Lakes| 118 Hartwell Court, Hoschton, GA 30548



# SHOWCASE HOME DESIGNER FEATURES | KITCHEN



**LEVEL 4 KAYES WHITE  
CABINETS**



**LEVEL 4 QUARTZ COUNTERTOP  
VIATERA ETUDE**



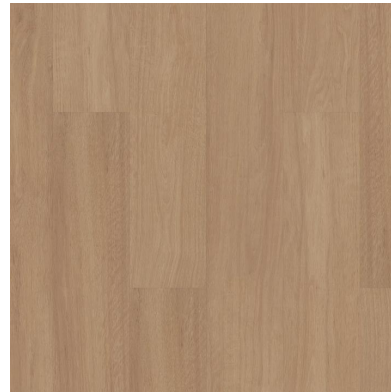
**H3-2 BRUSHED NICKEL  
PULL ON DOORS**



**H2-3 BRUSHED NICKEL  
CUP ON DRAWERS**



**RAKU SILVER TILE  
BACKSPLASH**



**SHAW EVP FLOORING  
SUPINO HD / HONEYCOMB**



**\*\*MOEN ARBOR SPOT  
RESISANT STAINLESS\*\***

Cresswind Twin Lakes| 118 Hartwell Court, Hoschton, GA 30548



©2022. Prices, homesites, amenities, home designs, square footage and other information subject to errors, changes, omissions, deletions, availability, prior sales and withdrawal at any time without notice. Square footage numbers are approximate and may vary depending on the standard measurement used. Photos and/or drawings of homes may show upgraded landscaping and may not represent the lowest priced homes in the community. All renderings and floorplans in these materials are an artist's conceptual drawings and will vary from the actual plans and homes as built. CGC1509406

**KOLTERHOMES®**

## SHOWCASE HOME DESIGNER FEATURES | KITCHEN APPLIANCES



Cresswind Twin Lakes| 118 Hartwell Court, Hoschton, GA 30548

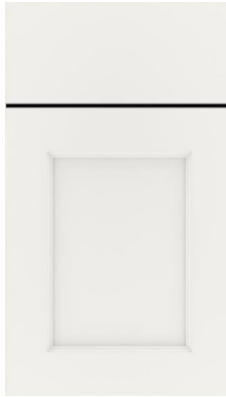


©2022. Prices, homesites, amenities, home designs, square footage and other information subject to errors, changes, omissions, deletions, availability, prior sales and withdrawal at any time without notice. Square footage numbers are approximate and may vary depending on the standard measurement used. Photos and/or drawings of homes may show upgraded landscaping and may not represent the lowest priced homes in the community. All renderings and floorplans in these materials are an artist's conceptual drawings and will vary from the actual plans and homes as built. CGC1509406

**KOLTERHOMES®**



## SHOWCASE HOME DESIGNER FEATURES | DRY BAR



**LEVEL 4 KAYES WHITE  
CABINETS**



**LEVEL 4 QUARTZ COUNTERTOP  
VIATERA ETUDE**



**RAKU SILVER TILE  
BACKSPLASH**



**H3-2 BRUSHED NICKEL  
PULL ON DOORS**

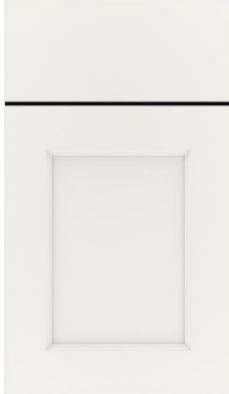


**H2-3 BRUSHED NICKEL  
CUP ON DRAWERS**

Cresswind Twin Lakes| 118 Hartwell Court, Hoschton, GA 30548



## SHOWCASE HOME DESIGNER FEATURES | LAUNDRY



**LEVEL 4 KAYES WHITE  
CABINETS**



**SILESTONE  
BLANCO  
MAPLE QUARTZ**



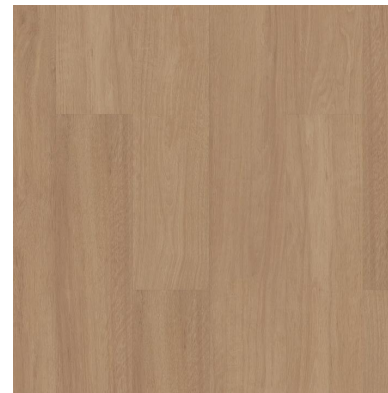
**H3-2 BRUSHED NICKEL  
PULL ON DOORS**



**H2-3 BRUSHED NICKEL  
CUP ON DRAWERS**



**MOEN CAMERIST SPOT  
RESISTANT STAINLESS**



**SHAW EVP FLOORING  
SUPINO HD / HONEYCOMB**

Cresswind Twin Lakes| 118 Hartwell Court, Hoschton, GA 30548



©2022. Prices, homesites, amenities, home designs, square footage and other information subject to errors, changes, omissions, deletions, availability, prior sales and withdrawal at any time without notice. Square footage numbers are approximate and may vary depending on the standard measurement used. Photos and/or drawings of homes may show upgraded landscaping and may not represent the lowest priced homes in the community. All renderings and floorplans in these materials are an artist's conceptual drawings and will vary from the actual plans and homes as built. CGC1509406

**KOLTERHOMES®**

# SHOWCASE HOME DESIGNER FEATURES | OWNERS BATH



**LEVEL 4 KAYES WHITE  
CABINETS**



**LEVEL 4 QUARTZ  
COUNTERTOP VIATERA ETUDE**



**LASSITER 4-LITE  
BRUSHED NICKEL**



**MOEN VOSS SINGLE  
BRUSHED NICKEL**



**SOLARA YARIS 12 X 24  
BATH FLOOR**



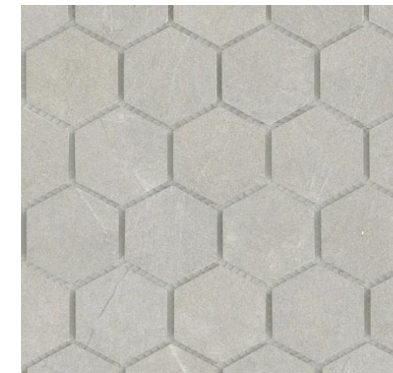
**H3-2 BRUSHED NICKEL  
PULL ON DOORS**



**H2-3 BRUSHED NICKEL  
CUP ON DRAWERS**



**PASSION BLANCO GL 9 X 9  
SHOWER WALL**



**SOLARA YARIS 2" HEX  
SHOWER FLOOR**

Cresswind Twin Lakes| 118 Hartwell Court, Hoschton, GA 30548



©2022. Prices, homesites, amenities, home designs, square footage and other information subject to errors, changes, omissions, deletions, availability, prior sales and withdrawal at any time without notice. Square footage numbers are approximate and may vary depending on the standard measurement used. Photos and/or drawings of homes may show upgraded landscaping and may not represent the lowest priced homes in the community. All renderings and floorplans in these materials are an artist's conceptual drawings and will vary from the actual plans and homes as built. CGC1509406

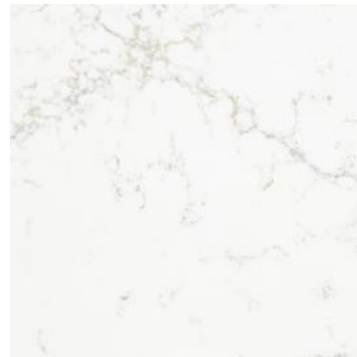
**KOLTERHOMES®**



## SHOWCASE HOME DESIGNER FEATURES | BATH 2



**LEVEL 4 KAYES WHITE  
CABINETS**



**LEVEL 4 QUARTZ  
COUNTERTOP VIATERA ETUDE**



**LASSITER 3-LITE  
BRUSHED NICKEL**



**MOEN VOSS SINGLE  
BRUSHED NICKEL**



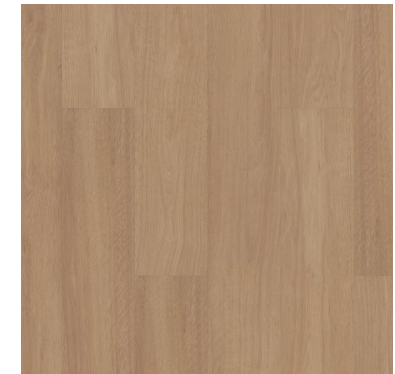
**H3-2 BRUSHED NICKEL  
PULL ON DOORS**



**H2-3 BRUSHED NICKEL  
CUP ON DRAWERS**



**CATCH ICE GL 4 X 16  
TUB WALL**



**SHAW EVP FLOORING  
SUPINO HD / HONEYCOMB**

Cresswind Twin Lakes| 118 Hartwell Court, Hoschton, GA 30548



©2022. Prices, homesites, amenities, home designs, square footage and other information subject to errors, changes, omissions, deletions, availability, prior sales and withdrawal at any time without notice. Square footage numbers are approximate and may vary depending on the standard measurement used. Photos and/or drawings of homes may show upgraded landscaping and may not represent the lowest priced homes in the community. All renderings and floorplans in these materials are an artist's conceptual drawings and will vary from the actual plans and homes as built. CGC1509406

**KOLTERHOMES®**

## SHOWCASE HOME DESIGNER FEATURES | BATH 3



**LEVEL 4 KAYES WHITE  
CABINETS**



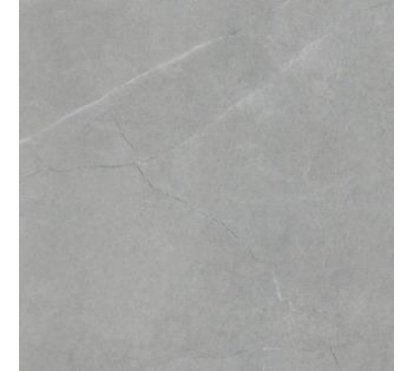
**SILESTONE BLANCO  
MAPLE QUARTZ**



**LASSITER 3-LITE  
BRUSHED NICKEL**



**MOEN VOSS SINGLE  
BRUSHED NICKEL**



**SOLARA YARIS 12 X 24  
BATH FLOOR**



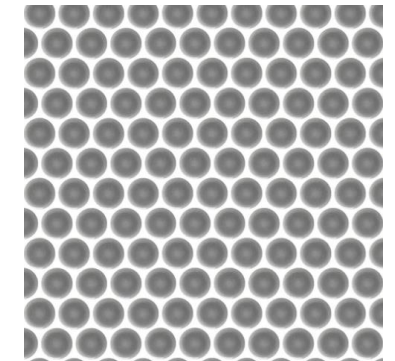
**H3-2 BRUSHED NICKEL  
PULL ON DOORS**



**H2-3 BRUSHED NICKEL  
CUP ON DRAWERS**



**CATCH ICE GL 4 X 16  
TUB WALL**



**SAVVY SILVER PENNY TILE  
SHOWER FLOOR**

Cresswind Twin Lakes| 118 Hartwell Court, Hoschton, GA 30548

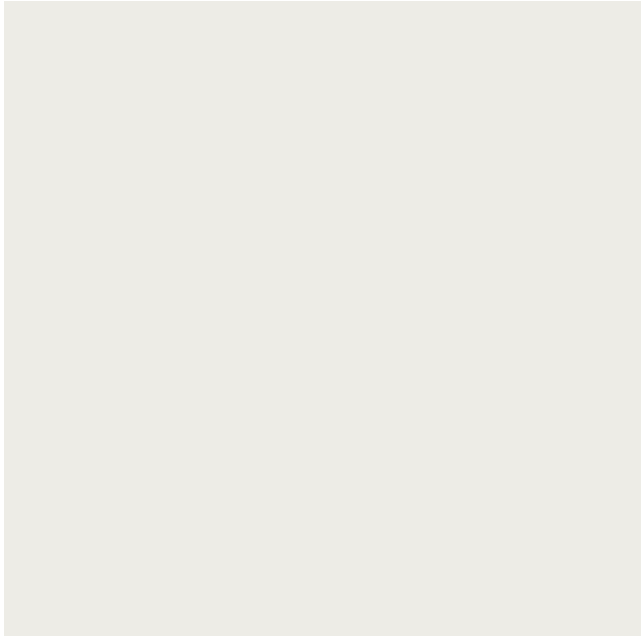


©2022. Prices, homesites, amenities, home designs, square footage and other information subject to errors, changes, omissions, deletions, availability, prior sales and withdrawal at any time without notice. Square footage numbers are approximate and may vary depending on the standard measurement used. Photos and/or drawings of homes may show upgraded landscaping and may not represent the lowest priced homes in the community. All renderings and floorplans in these materials are an artist's conceptual drawings and will vary from the actual plans and homes as built. CGC1509406

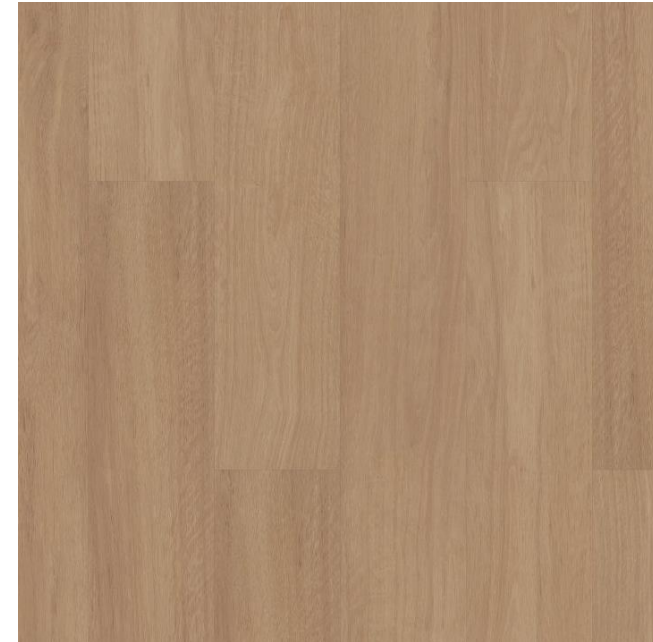
**KOLTERHOMES®**

## SHOWCASE HOME DESIGNER FEATURES

### MAIN LEVEL - GENERAL FINISHES



**SHERWIN WILLIAMS WALL PAINT  
SW7005 PURE WHITE**



**SHAW EVP FLOORING  
SUPINO HD / HONEYCOMB**

Cresswind Twin Lakes| 118 Hartwell Court, Hoschton, GA 30548



©2022. Prices, homesites, amenities, home designs, square footage and other information subject to errors, changes, omissions, deletions, availability, prior sales and withdrawal at any time without notice. Square footage numbers are approximate and may vary depending on the standard measurement used. Photos and/or drawings of homes may show upgraded landscaping and may not represent the lowest priced homes in the community. All renderings and floorplans in these materials are an artist's conceptual drawings and will vary from the actual plans and homes as built. CGC1509406

**KOLTERHOMES®**