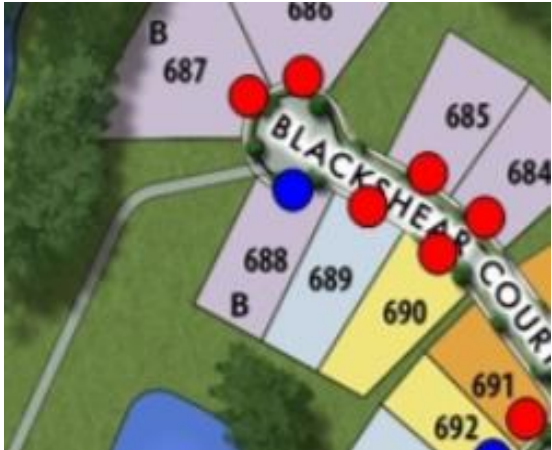


SHOWCASE HOME | ROSEWOOD



Street Address: 65 BLACKSHEAR CT

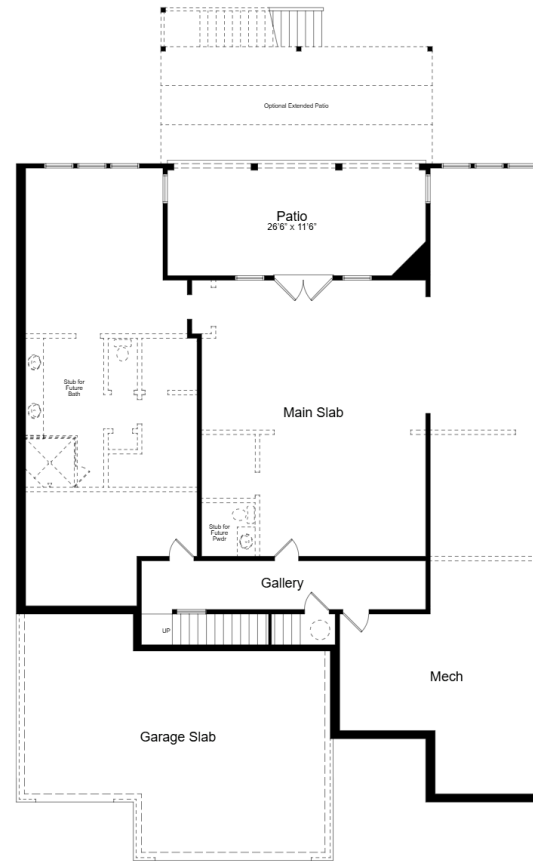
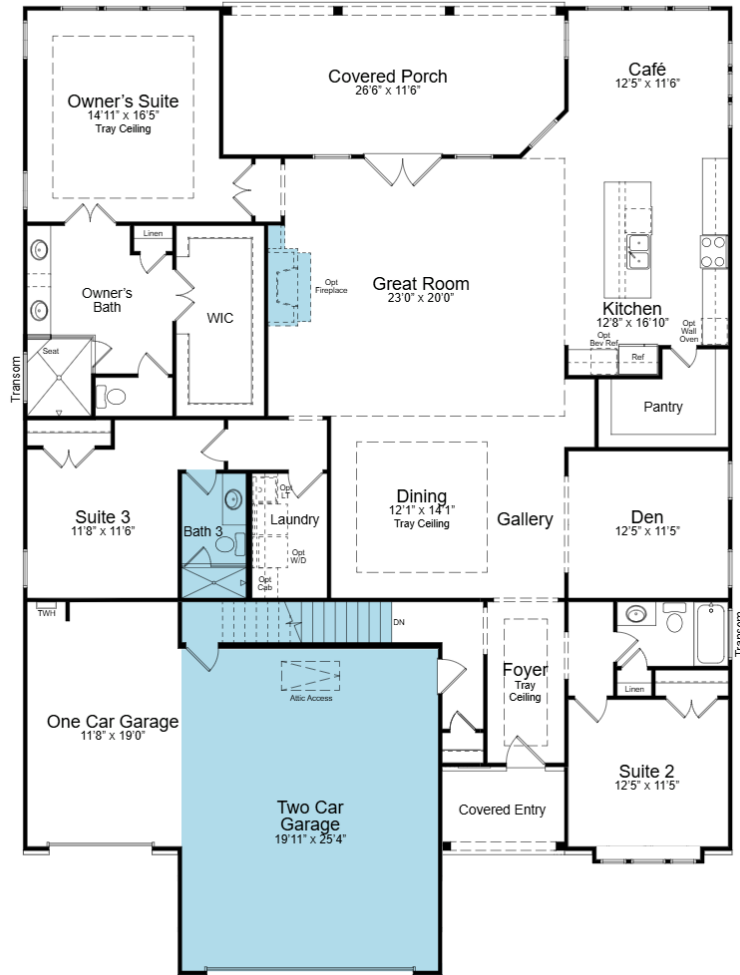
A/C Sq. Ft.: 2600		Price:
Bedrooms: 3	Bathrooms: 3	Move-In Date:



ELEVATION: CB

HOMESITE: 688

Cresswind Twin Lakes| 118 Hartwell Court, Hoschton, GA 30548



SHOWCASE HOME FLOORPLAN

ROSEWOOD

3 Bedroom, 3 Bath, Den, Great Room,
Covered Lanai, 3-Car Garage and Unfinished Basement

Cresswind Twin Lakes| 118 Hartwell Court, Hoschton, GA 30548



©2022. Prices, homesites, amenities, home designs, square footage and other information subject to errors, changes, omissions, deletions, availability, prior sales and withdrawal at any time without notice. Square footage numbers are approximate and may vary depending on the standard measurement used. Photos and/or drawings of homes may show upgraded landscaping and may not represent the lowest priced homes in the community. All renderings and floorplans in these materials are an artist's conceptual drawings and will vary from the actual plans and homes as built. CGC1509406

KOLTERHOMES®

SHOWCASE HOME FEATURE HIGHLIGHTS

KITCHEN DETAILS

- 30" gas 5-burner cooktop
- Gourmet Kitchen
- Cabinet crown molding
- Quartz countertop (Level 3)
- EVP flooring
- Pots and Pan Drawer
- Stainless Steel Single Bowl Undermount Sink

DESIGNER FEATURES

- 4 FT. garage extension
- Frameless shower enclosure in owner's bath and bath 3
- Laundry Room with wall cabinets, laundry sink & Quartz countertop
- Covered 8' Deck Extension
- 42" Direct Vent Linear Gas Fireplace
- Radiant Barrier- Tech Shield
- Unfinished Basement

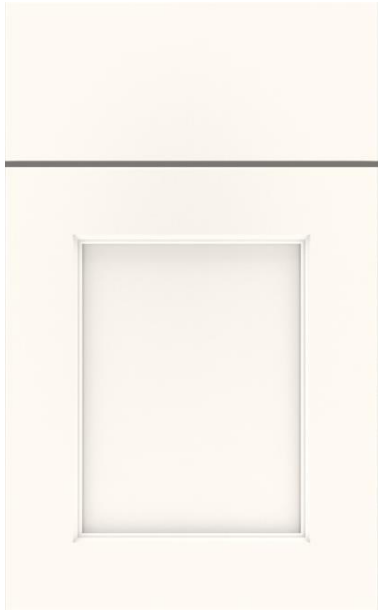
Cresswind Twin Lakes| 118 Hartwell Court, Hoschton, GA 30548



©2022. Prices, homesites, amenities, home designs, square footage and other information subject to errors, changes, omissions, deletions, availability, prior sales and withdrawal at any time without notice. Square footage numbers are approximate and may vary depending on the standard measurement used. Photos and/or drawings of homes may show upgraded landscaping and may not represent the lowest priced homes in the community. All renderings and floorplans in these materials are an artist's conceptual drawings and will vary from the actual plans and homes as built. CGC1509406

KOLTERHOMES®

SHOWCASE HOME DESIGNER FEATURES | KITCHEN



**LEVEL 4 KAYES CABINETS
WHITE PERIMETER AND
BUCKSKIN ISLAND**



**LEVEL 3 QUARTZ COUNTERTOP
BLANCO ORION**



**MOROCCO
ARABESQUE SILVER
BACKSPLASH**



MOEN ALIGN

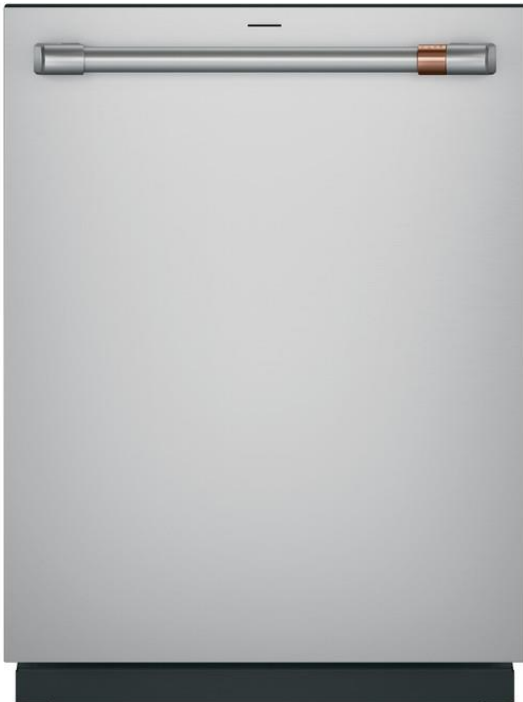


**SHAW EVP FLOORING L3
ENTERPRISE / WILTSHIRE
OAK**

Cresswind Twin Lakes| 118 Hartwell Court, Hoschton, GA 30548



SHOWCASE HOME DESIGNER FEATURES KITCHEN APPLIANCES



Cresswind Twin Lakes| 118 Hartwell Court, Hoschton, GA 30548



©2022. Prices, homesites, amenities, home designs, square footage and other information subject to errors, changes, omissions, deletions, availability, prior sales and withdrawal at any time without notice. Square footage numbers are approximate and may vary depending on the standard measurement used. Photos and/or drawings of homes may show upgraded landscaping and may not represent the lowest priced homes in the community. All renderings and floorplans in these materials are an artist's conceptual drawings and will vary from the actual plans and homes as built. CGC1509406

KOLTERHOMES®

SHOWCASE HOME DESIGNER FEATURES | OWNERS BATH



**LEVEL 4
CABINETS –
KAYES
BUCKSKIN**



**CONTESSA NOBLEZA
LUGO
SHOWER WALLS
(POLISHED) AND
BATHROOM FLOOR
(MATTE)**



**MOEN VOSS
BRUSHED
GOLD**



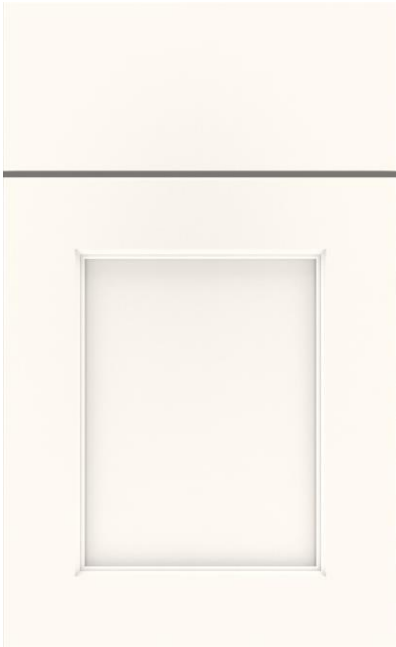
**SILESTONE
QUARTZ-
MIAMI VENA**

SHOWER FLOOR

Cresswind Twin Lakes| 118 Hartwell Court, Hoschton, GA 30548



SHOWCASE HOME DESIGNER FEATURES | BATH 2



**LEVEL 4
CABINETS
KAYES
WHITE**



**BLANCO ORION
SILESTONE
QUARTZ**



**TUB WALL TILE
PASSION GRIS 9X9**



**BATHROOM FLOOR
ENTERPRISE / WILTSHIRE OAK**



**MOEN VOSS
SINGLE LEVER
BRUSHED
GOLD**

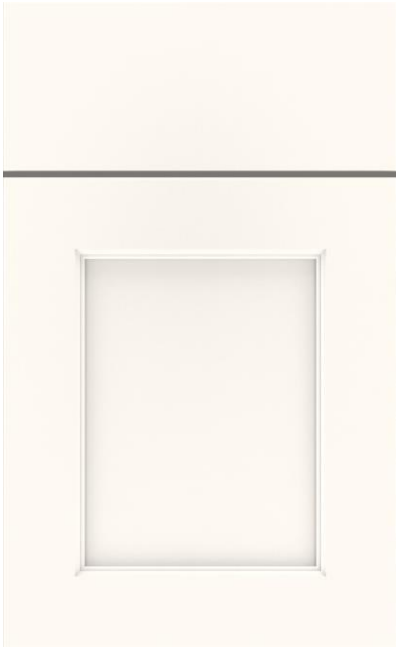
Cresswind Twin Lakes| 118 Hartwell Court, Hoschton, GA 30548



©2022. Prices, homesites, amenities, home designs, square footage and other information subject to errors, changes, omissions, deletions, availability, prior sales and withdrawal at any time without notice. Square footage numbers are approximate and may vary depending on the standard measurement used. Photos and/or drawings of homes may show upgraded landscaping and may not represent the lowest priced homes in the community. All renderings and floorplans in these materials are an artist's conceptual drawings and will vary from the actual plans and homes as built. CGC1509406

KOLTERHOMES®

SHOWCASE HOME DESIGNER FEATURES | BATH 3



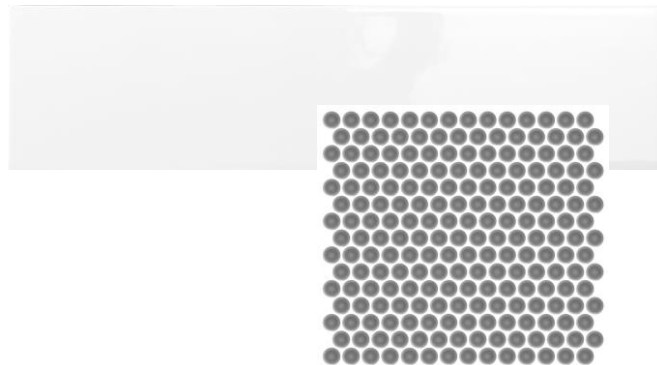
**LEVEL 4
CABINETS
KAYES
WHITE**



**BLANCO
MAPLE
SILESTONE
QUARTZ**



**MOEN VOSS
SINGLE LEVER
CHROME**



**SHOWER WALL TILE
CATCH ICE 4X16**

**SHOWER FLOOR
SAVVY SILVER PENNY**



**BATHROOM FLOOR
JUTE LINEN 12X24**

Cresswind Twin Lakes| 118 Hartwell Court, Hoschton, GA 30548



©2022. Prices, homesites, amenities, home designs, square footage and other information subject to errors, changes, omissions, deletions, availability, prior sales and withdrawal at any time without notice. Square footage numbers are approximate and may vary depending on the standard measurement used. Photos and/or drawings of homes may show upgraded landscaping and may not represent the lowest priced homes in the community. All renderings and floorplans in these materials are an artist's conceptual drawings and will vary from the actual plans and homes as built. CGC1509406

KOLTERHOMES®

SHOWCASE HOME DESIGNER FEATURES

MAIN LEVEL - GENERAL FINISHES



**SHAW EVP
FLOORING
ENTERPRISE/
WILTSHIRE OAK**

Cresswind Twin Lakes| 118 Hartwell Court, Hoschton, GA 30548



©2022. Prices, homesites, amenities, home designs, square footage and other information subject to errors, changes, omissions, deletions, availability, prior sales and withdrawal at any time without notice. Square footage numbers are approximate and may vary depending on the standard measurement used. Photos and/or drawings of homes may show upgraded landscaping and may not represent the lowest priced homes in the community. All renderings and floorplans in these materials are an artist's conceptual drawings and will vary from the actual plans and homes as built. CGC1509406

KOLTERHOMES®