

# SHOWCASE HOME | EMILY

# CRESSWIND®

Street Address: 1051 Seven Sisters Ave

A/C Sq. Ft.: 2,015

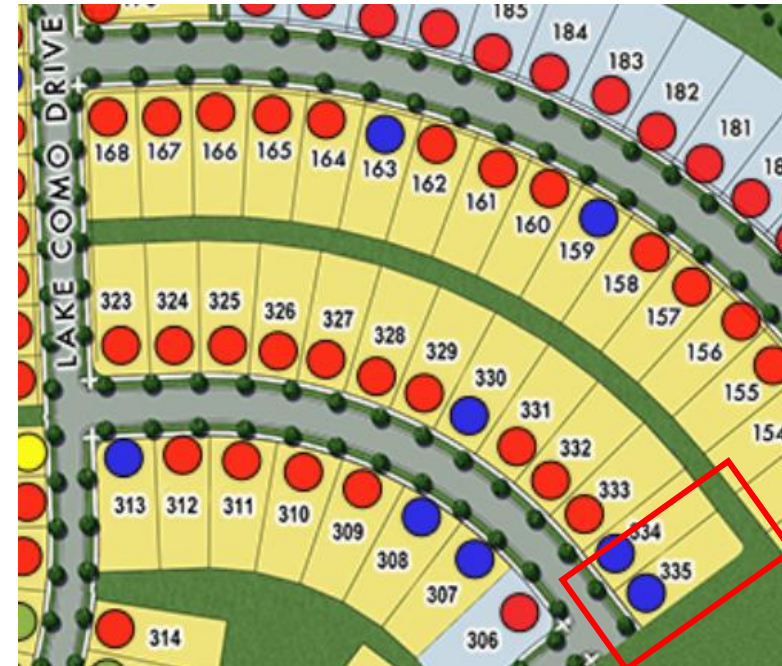
Bedrooms: 2

Bathrooms: 2

Move-In Date: Ready Now



ELEVATION: BB- Craftsman



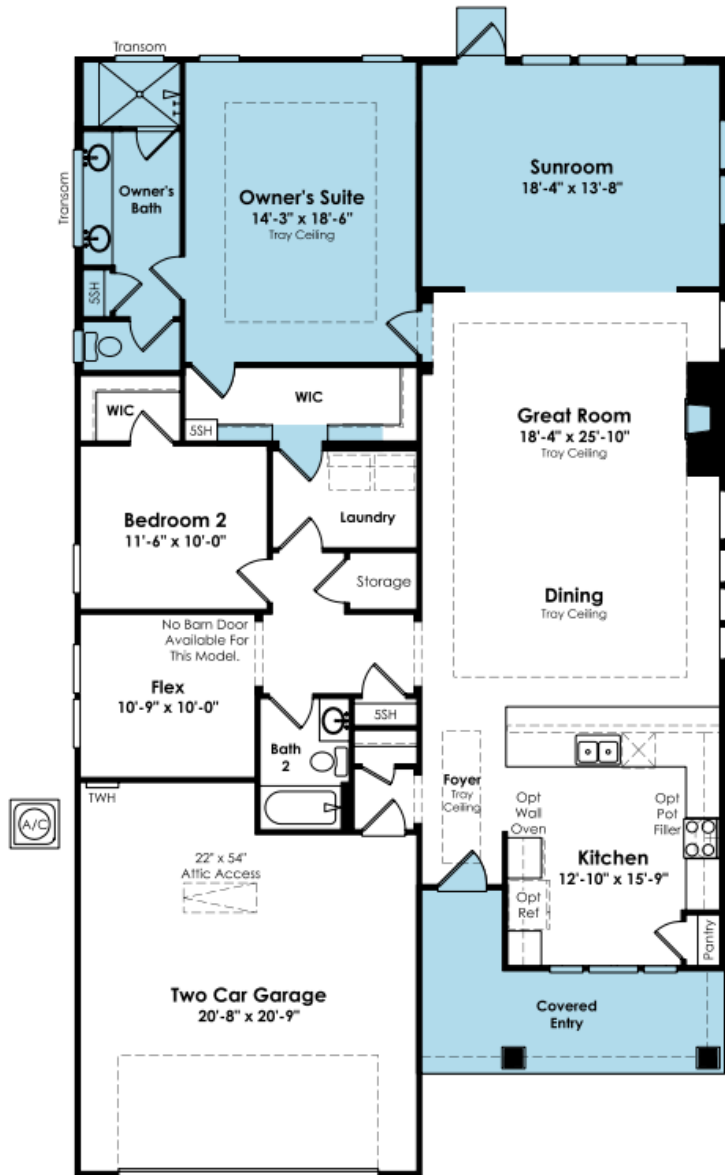
HOMESITE: 335

Exterior Color Package 10: *Light Mist Siding, Moscow Midnight Front Door, Classic Blue Shutters, Weathered Wood Roofing.*



©2022. Prices, homesites, amenities, home designs, square footage and other information subject to errors, changes, omissions, deletions, availability, prior sales and withdrawal at any time without notice. Square footage numbers are approximate and may vary depending on the standard measurement used. Photos and/or drawings of homes may show upgraded landscaping and may not represent the lowest priced homes in the community. All renderings and floorplans in these materials are an artist's conceptual drawings and will vary from the actual plans and homes as built. CGC1509406

KOLTERHOMES®



## SHOWCASE HOME FLOORPLAN

### EMILY

2 Bedroom, 2 Full Bath, Sunroom ILO Covered Lanai, 4' Extended Owner's Suite and Sunroom, Laundry Door to Owner's Walk-In Closet, Oversized Owner's Shower with Barrier Free Shower Entry, Gas Fireplace, Walk-In Kitchen Pantry, Extended Concrete Patio, 2-Car Garage

## SHOWCASE HOME FEATURE HIGHLIGHTS

### KITCHEN DETAILS

- CHEF Kitchen Cabinet & Appliance Package: Upgraded Cabinets, 36" Cooktop Cabinet w/ Drawers, Bump Up Over Hood, Built-In Refrigerator Facade, Crown Molding, Double Trash Roll-out
- CAFÉ Appliances: 36" Touch-Control Electric Cooktop, 36" Commercial Style Hood, Built-in Microwave/ Convection Oven, 30" Smart Single Wall Oven with Convection in Tower Cabinet, Stainless Interior Smart Dishwasher
- Quartz Countertops with Kitchen Full Height Backsplash, to Ceiling, Under Hood
- Moen Chrome Faucet with Farmhouse Cast Iron Kitchen Sink
- Under Kitchen Cabinet Lighting with switch

### DESIGNER FEATURES

- Sunroom ILO Covered Lanai
- 4' Owner Suite and Sunroom Extension
- Extended Concrete Patio
- Laundry Door to Owner's Walk-In Closet
- Gas Fireplace \*Includes TV Prewire 6" AFF
- Owner's Suite Oversized Walk-In Shower with Bench and Barrier Free Shower Entry
- Floor Outlet with Brass Trim in Great Room
- Shaw EVP Flooring throughout home with tile in Bathrooms



## SHOWCASE HOME DESIGNER FEATURES | KITCHEN





## SHOWCASE HOME DESIGNER FEATURES OWNER'S BATH



## SHOWCASE HOME DESIGNER FEATURES | BATH II



3.335 BATH II



## SHOWCASE HOME DESIGNER FEATURE | FIREPLACE SURROUND



## SHOWCASE HOME DESIGNER FEATURE | FIREPLACE MANTLE





## SHOWCASE HOME DESIGNER FEATURE | FLOORING

