

# SHOWCASE HOME | PRISCILLA

Street Address: 14068 Bastille Street

A/C Sq. Ft.: 2,196

Bedrooms: 3

Bathrooms: 3

# KOLTER HOMES®



ELEVATION: A - Tropical Modern



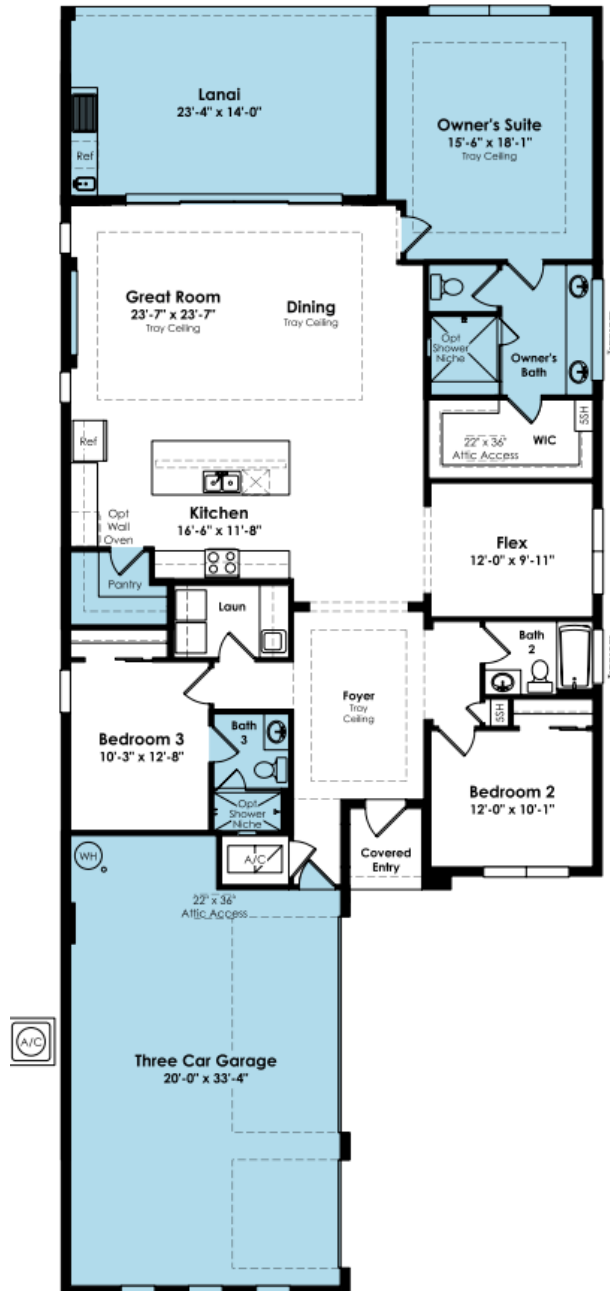
HOMESITE: 187

Exterior Color Package: A5



Prices, homesites, amenities, home designs, square footage and other information subject to errors, changes, omissions, deletions, availability, prior sales and withdrawal at any time without notice. Square footage numbers are approximate and may vary depending on the standard measurement used. Photos and/or drawings of homes may show upgraded landscaping and may not represent the lowest priced homes in the community. All renderings and floorplans in these materials are an artist's conceptual drawings and will vary from the actual plans and homes as built. CRC057817/CGC1514916

KOLTERHOMES®



## SHOWCASE HOME FLOORPLAN

This brand-new Leslie floorplan, built by Kolter Homes, is situated on a southern facing homesite in the new 55+ Esprit community. The home includes 3 bedrooms, 3 bathrooms, and a 3-car garage. The owner's suite and lanai have been extended by 4' to increase both indoor and outdoor living space, and a 16-foot wide by 10-foot tall sliding glass door connects the great room to the lanai, which also features an outdoor summer kitchen.

Inside, the kitchen comes with gas cooking, an upgraded built-in pantry, a waterfall style quartz island, and second tier upper cabinets. The owner's shower has been extended to the deluxe shower option and the great room comes with a 74" electric fireplace. This Leslie also includes a tankless gas water heater and spray foam insulation for added energy efficiency.

## SHOWCASE HOME FEATURE HIGHLIGHTS

### KITCHEN DETAILS

- CHEF KITCHEN CONFIGURATION W/ 36" ARTISAN WOOD HOOD
- GE CAFÉ APPLIANCES W/DOUBLE OVEN
- 2<sup>ND</sup> TIER CABINETS
- FULL-HEIGHT QUARTZ BACKSPLASH
- UNDER CABINET LIGHTING
- PENDANT LIGHTING ABOVE ISLAND
- BUILT-IN PANTRY

### STRUCTURAL OPTIONS

- 4 FT OWNER'S SUITE AND LANAI EXTENSION
- OWNER'S DELUXE (EXTENDED SHOWER)
- 5FT PRIVACY WALL W/PRE-PLUMB FOR SUMMER KITCHEN
- LAUNDRY ROOM PASS-THRU DOOR
- SHOWER I/O TUB BATH #3
- EXTERIOR TANKLESS WATER HEATER
- GAS STUB OUT FOR FUTURE POOL
- OPEN CELL SPRAY FOAM INSULATION
- 16' WIDE BY 10' TALL SLIDER DOOR

# SHOWCASE HOME DESIGNER FEATURES | KITCHEN



**KITCHEN CABINETS – KITCHENCRAFT YURO  
PERIMETER: NORDIC  
ISLAND: PORTOBELLO**



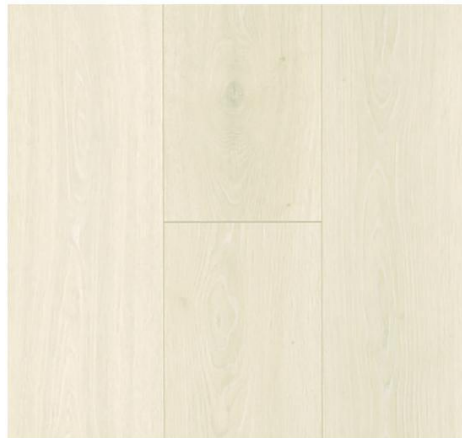
**HARDWARE –  
625-160-PC**



**PERIMETER COUNTERTOP & FULL HEIGHT  
BACKSPLASH – CAMBRIA QUARTZ  
INVERNESS FROST**



**KITCHEN FAUCET – MOEN CIA W/  
MOTION SENSE CHROME**



**FLOORING – MOHAWK REVWOOD  
DRIFTWOOD COLLECTIVE GULF SAND**



**ISLAND COUNTERTOP– CAMBRIA QUARTZ  
IRONSBRIDGE**

## SHOWCASE HOME DESIGNER FEATURES | OWNER'S BATHROOM



**BATHROOM CABINETS – KITCHENCRAFT  
SUMMIT WIRED MERCURY  
(FLOATING CABINET)**



**HARDWARE –  
625-160-PC**



**COUNTERTOP – CAMBRIA  
INVERNESS SWANSEA**



**SHOWER WALL– EMSER TILE  
NOBLEZA LUGO PL 12X24**



**BATHROOM FAUCET –  
CIA 8” CH**



**HANDHELD – ECO  
PERFORMANCE SINGLE  
FUNCTION ON SLIDE BAR CH**



**SHOWER FLOOR – EMSER TILE  
OPUSCAR PEBBLE LIGHT MO**



**FLOORING – EMSER TILE TIMES  
SQUARE WHITE MT 24X24**

## SHOWCASE HOME DESIGNER FEATURES | BATHROOM 2



**BATHROOM CABINETS – KITCHENCRAFT  
YURO PORTOBELLO  
(FLOATING CABINET)**



**HARDWARE –  
625-160-PC**



**COUNTERTOP – DAL TILE  
FREEDOM CALACATTA**



**BATHROOM FAUCET –  
CIA 8" CH**



**TUB WALL & FLOORING– EMSER  
TILE PORTO II WHITE PL 12X24**

# SHOWCASE HOME DESIGNER FEATURES | BATHROOM 3



**BATHROOM CABINETS –  
KITCHENCRAFT SALEM NORDIC**



**HARDWARE –  
625-160-PC**



**COUNTERTOP – CAMBRIA  
QUARTZ INVERNESS FROST**



**SHOWER WALL – EMSER TILE  
CATCH ICE MT 3X12**



**BATHROOM FAUCET –  
CIA 8" CH**



**FLOORING– EMSER TILE  
STERLINA II WHITE PL 12X24**



**SHOWER FLOOR – EMSER TILE  
WINTER FROST 2" HEX MIX MO**