

SHOWCASE HOME | Madison

KOLTER HOMES®

Street Address: 9611 St. Germain Drive

A/C Sq. Ft.: 2,360

Bedrooms: 3 with a Den

Bathrooms: 3

Move-In Date: April/May



ELEVATION: Tropical Modern



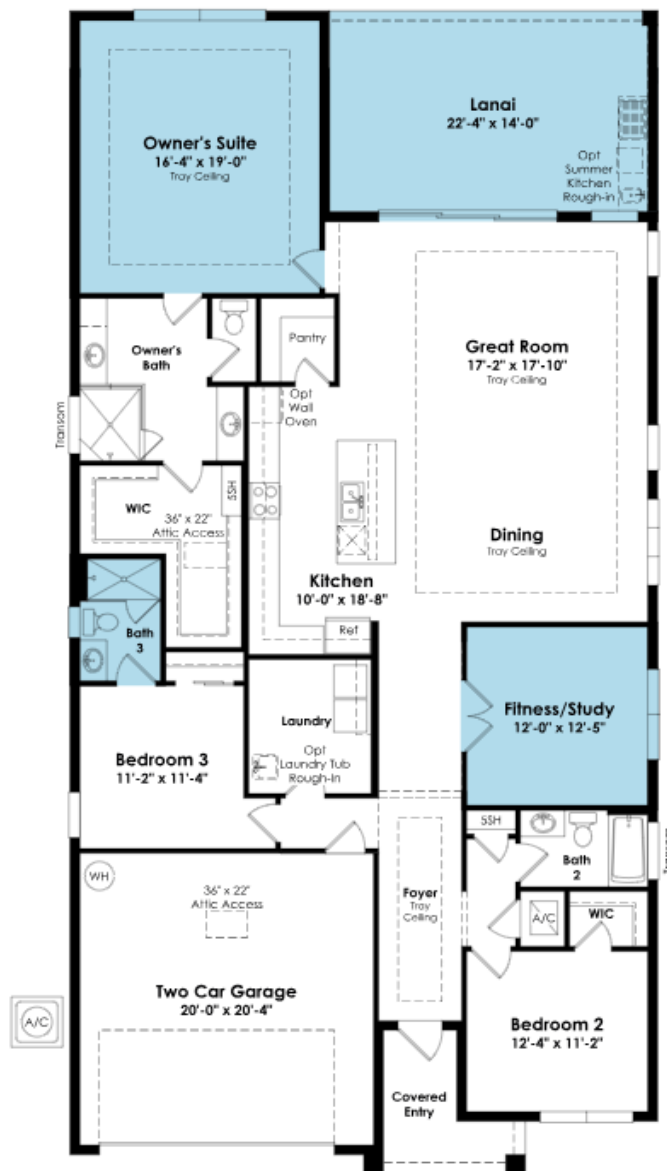
HOMESITE: 1.081

Exterior Color Package: A3



Prices, homesites, amenities, home designs, square footage and other information subject to errors, changes, omissions, deletions, availability, prior sales and withdrawal at any time without notice. Square footage numbers are approximate and may vary depending on the standard measurement used. Photos and/or drawings of homes may show upgraded landscaping and may not represent the lowest priced homes in the community. All renderings and floorplans in these materials are an artist's conceptual drawings and will vary from the actual plans and homes as built. CRC057817/CGC1514916

KOLTERHOMES®



SHOWCASE HOME FLOORPLAN

Model photos used for reference. This 3 Bedroom, 3 Bath, Den and a 2-car Garage with a 4' extension home features east exposure preserve views from Lanai. The centrally located island Kitchen is the heart of the home offering white cabinets with crown molding, quartz countertops, a 3" island edge, gas Cook Top & Wall Oven, and GE cafe appliances. The Great Room and Dining Area open onto the Lanai, allowing you to expand your living area outdoors. This home is on a preserve homesite to allow the tranquility and relaxation throughout the backyard and in the home

SHOWCASE HOME FEATURE HIGHLIGHTS

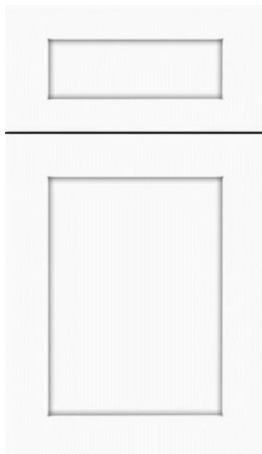
KITCHEN DETAILS

- 30" CAFÉ GAS COOKTOP
- CAFÉ KITCHEN APPLIANCES
- CABINET CROWN MOULDING
- UNDER KITCHEN CABINET LIGHTING
- QUARTZ COUNTERTOPS
- REVWOOD LAMINATE FLOORING
- FULL HEIGHT QUARTZ BACKSPLASH
- 3" QUARTZ ISLAND EDGE
- 2ND TIER CABINETS
- CABINET PANEL PACKAGE

DESIGNER FEATURES

- FITNESS ILO OF FLEX ROOM
- 4' OWNER SUITE AND LANAI EXTENSION
- 5' PRIVACY WALL
- SHOWER ILO OF TUB IN BATHROOM 3
- RAISED TV OPTION IN GREAT ROOM
- RAISED TV OPTION IN OWNER'S SUITE

SHOWCASE HOME DESIGNER FEATURES | KITCHEN



**KITCHEN CABINETS –
KITCHEN CRAFT
SALEM WHITE CAP
(PERIMETER)**



**KITCHEN CABINETS
– KITCHENCRAFT
SALEM BLACK
(ISLAND)**



**HARDWARE –
625-160-SBZ**



**COUNTERTOPS AND
BACKSPLASH –
CAMBRIA IVERNESS
EVERLEIGH**



**KITCHEN FAUCET –
MOEN CIA TWO-
HANDLE BRUSHED
GOLD**



**FLOORING –
DRIFTWOOD
COLLECTIVE GULF
SAND LAMINATE**

SHOWCASE HOME DESIGNER FEATURES | OWNER'S BATHROOM



**BATHROOM CABINETS
– KITCHENCRAFT
SALEM CHARCOAL**



**HARDWARE –
625-160-MB**



**COUNTERTOP –
CAMBRIA
SMITHFIELD**



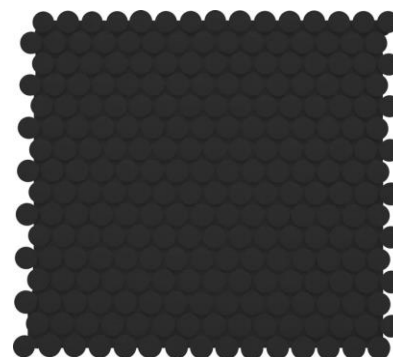
**SHOWER WALL –
EMSER STERLINA II
SILVER PL 12x24**



**BATHROOM FAUCET
– MOEN CIA ONE-
HANDLE MB**



**HANDHELD FOUR
FUNCTION SLIDE BAR
– MOEN MB**



**SHOWER
FLOOR –
EMSER REZONE
PENNY BLACK**



**FLOORING – EMSER
STERLINA II SILVER
24x24**

SHOWCASE HOME DESIGNER FEATURES | BATHROOM 2



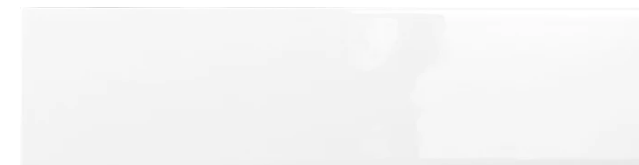
BATHROOM CABINETS
– KITCHENCRAFT
CONTEMPRA
VERTICAL PIER



HARDWARE –
625-160-MB



COUNTERTOP –
CAMBRIA
SMITHFIELD



TUB WALL –
EMSER CATCH
ICE GL 4x16



BATHROOM FAUCET
– MOEN CIA ONE-
HANDLE MB



FLOORING –
EMSER STERLINA
II SILVER 12x24

SHOWCASE HOME DESIGNER FEATURES | BATHROOM 3



BATHROOM CABINETS
– KITCHENCRAFT
CONTEMPRA
VERTICAL PIER



HARDWARE –
625-160-PC



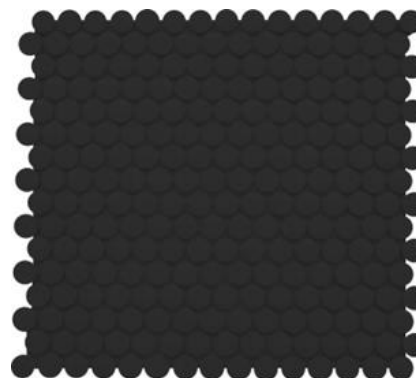
COUNTERTOP –
DAL TILE MORNING
FROST



SHOWER WALL –
EMSER CATHC
ICE GL 4x16



BATHROOM FAUCET –
MOEN BELFIELD TWO-
HANDLE CHROME



BATHROOM NICHE –
EMSER REZONE
PENNY BLACK



FLOORING –
EMSER STERLINA
II SILVER 12x24