

# SHOWCASE HOME | EMILY

# KOLTER HOMES®

Street Address: 805 Liliana Drive, Deland, Florida 32724

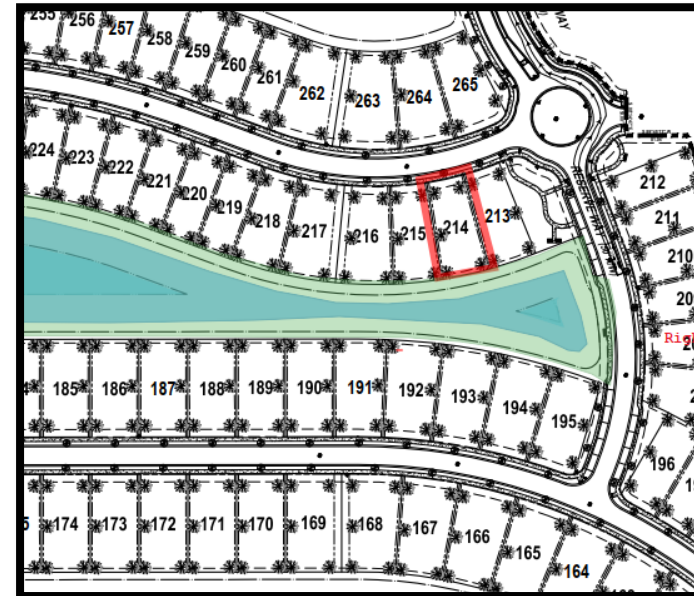
A/C Sq. Ft.: 1,668

Price:

Bedrooms: 2

Bathrooms: 2

Move-In Date: February 2023



## ELEVATION: C

## HOMESITE: 214

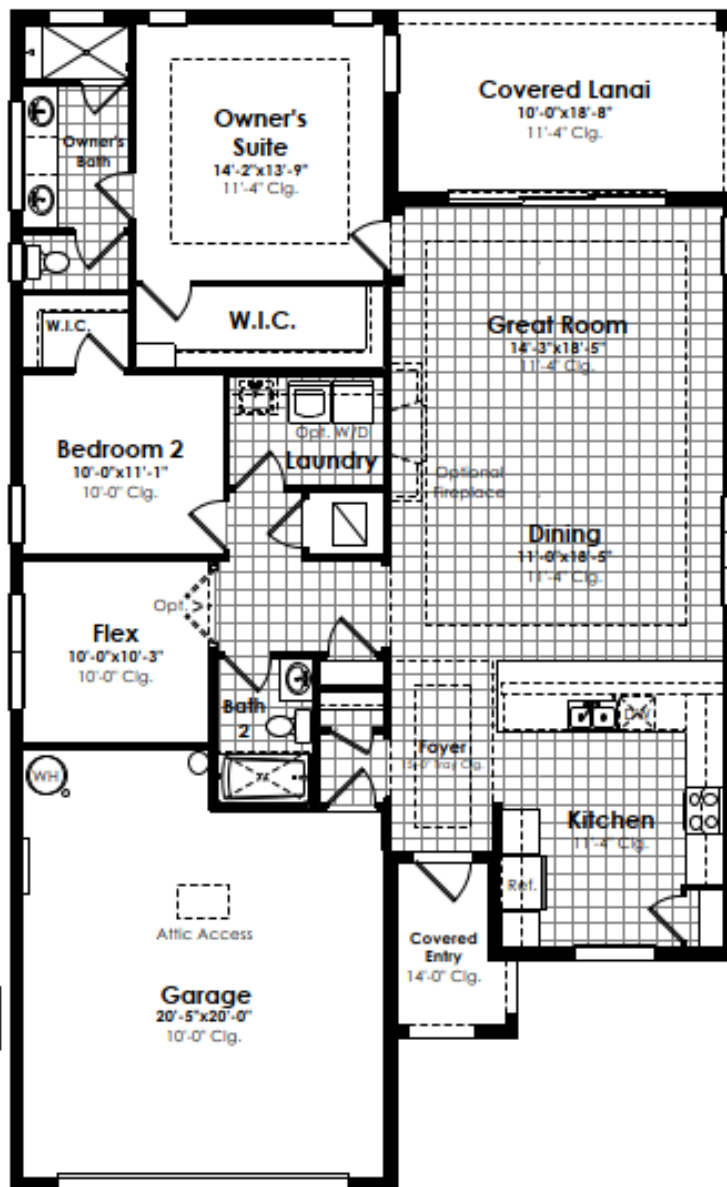
Exterior Color Package C3: Body - SW6204 Sea Salt, Trim - SW7005 Pure White, Accent 1 - SW7005 Pure White, Accent 2 - SW7619 Labradorite

Reserve at Victoria | 805 Liliana Drive, Deland, Florida 32724



©2022. Prices, homesites, amenities, home designs, square footage and other information subject to errors, changes, omissions, deletions, availability, prior sales and withdrawal at any time without notice. Square footage numbers are approximate and may vary depending on the standard measurement used. Photos and/or drawings of homes may show upgraded landscaping and may not represent the lowest priced homes in the community. All renderings and floorplans in these materials are an artist's conceptual drawings and will vary from the actual plans and homes as built. CGC1509406

KOLTERHOMES®



## SHOWCASE HOME FLOORPLAN

### THE EMILY

2 Bedroom, Flex Room, 2 Full Baths, Great Room, Dining Room  
Covered Lanai and 2-Car Garage

Reserve at Victoria | 805 Liliana Drive, Deland, Florida 32724



## SHOWCASE HOME FEATURE HIGHLIGHTS



### KITCHEN DETAILS

- Luxury quartz countertops
- Stainless steel single bowl undermount sink
- Large cabinet crown molding
- Pantry cabinet with four roll-out storage trays  
i/l/o drywall pantry
- 24” deep cabinet above refrigerator with two panels
- Slide-in upgraded range
- Waterfall island countertop
- Matte black faucet and cabinet hardware

### DESIGNER FEATURES

- 12’ wide x 10’ tall sliding glass doors
- Designer upgraded lighting including exterior coach lights
- 12x24 Veined tile flooring in all main areas
- Upgraded interior five panel doors with matte black door hardware
- Double doors added to Flex Space
- Semi-frameless shower enclosure for the Owner’s Bath
- Tile to-the-ceiling in all baths

*\*Featured highlights are subject to change. Please refer to the selections list provided by your New Home Guide for the most current selections.*



# SHOWCASE HOME DESIGNER FEATURES | KITCHEN



CABINET HARDWARE

BACKSPLASH

QUARTZ COUNTERTOP

CABINET

MAIN FLOOR

*\*\*The images shown are conceptual in nature and the perception of color, texture, and pattern may be different when viewed in person. Options subject to change without notice.\*\**

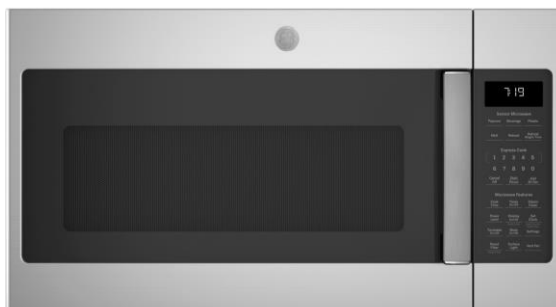


# SHOWCASE HOME DESIGNER FEATURES | KITCHEN APPLIANCES



SLIDE-IN RANGE

**GE®** 30" Slide-In Electric Convection Range with No Preheat Air Fry



MICROWAVE HOOD

GE-1-9-Cu-Ft-Over-the-Range-Sensor-Microwave-Oven



DISHWASHER

GE® Top Control with Stainless Steel Interior Dishwasher with Sanitize Cycle & Dry Boost with Fan Assist

*\*\*Appliances shown are subject to change without notice. Please refer to the selections list provided by your New Home Guide for the most current selections \*\**



## SHOWCASE HOME DESIGNER FEATURES | LIGHTING

FOYER  
FIXTUREDINING  
CHANDELIERISLAND  
PENDANTS

Reserve at Victoria|, 805 Liliana Deland, Florida 32724



©2022. Prices, homesites, amenities, home designs, square footage and other information subject to errors, changes, omissions, deletions, availability, prior sales and withdrawal at any time without notice. Square footage numbers are approximate and may vary depending on the standard measurement used. Photos and/or drawings of homes may show upgraded landscaping and may not represent the lowest priced homes in the community. All renderings and floorplans in these materials are an artist's conceptual drawings and will vary from the actual plans and homes as built. CGC1509406

**KOLTERHOMES**<sup>®</sup>

## SHOWCASE HOME DESIGNER FEATURES | OWNER'S BATH



CABINET

QUARTZ COUNTERTOP

CABINET HARDWARE

SHOWER WALL TILE

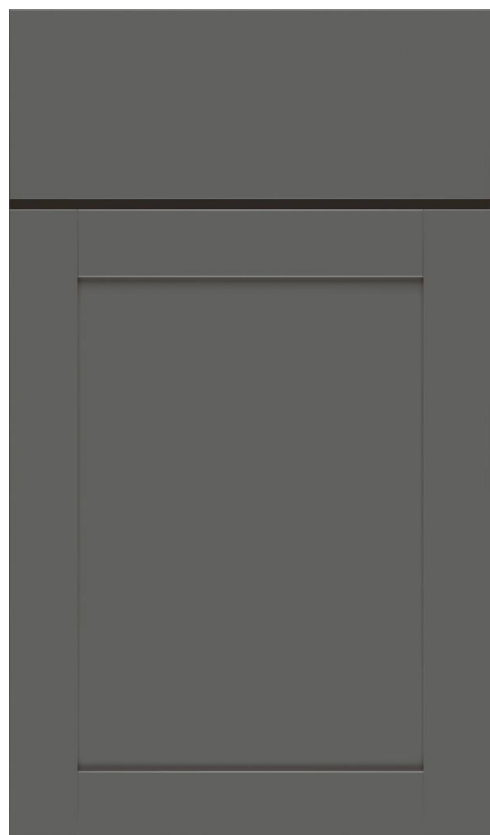
SHOWER FLOOR

FLOOR TILE

*\*\*The images shown are conceptual in nature and the perception of color, texture, and pattern may be different when viewed in person. Options subject to change without notice.\*\**



## SHOWCASE HOME DESIGNER FEATURES | BATH 2



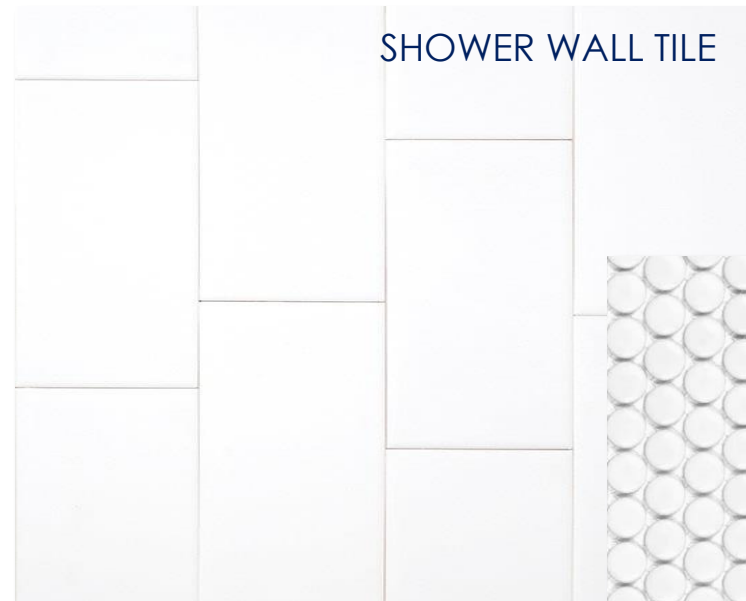
CABINET



CABINET HARDWARE



QUARTZ COUNTERTOP



SHOWER WALL TILE



SHOWER ACCENT TILE



FLOOR TILE

*\*\*The images shown are conceptual in nature and the perception of color, texture, and pattern may be different when viewed in person. Options subject to change without notice.\*\**

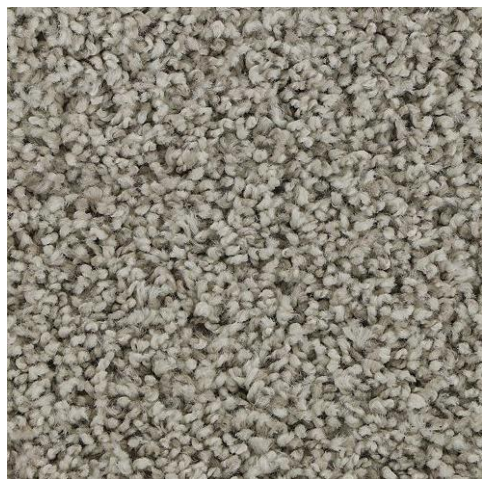




# SHOWCASE HOME DESIGNER FEATURES | GENERAL OPTIONS



INTERIOR PAINT



BEDROOM & FLEX CARPET



MAIN FLOOR



INTERIOR DOOR  
HARDWARE UPGRADE



INTERIOR DOOR  
UPGRADE

*\*\*The images shown are conceptual in nature and the perception of color, texture, and pattern may be different when viewed in person. Options subject to change without notice.\*\**



## SHOWCASE HOME DESIGNER FEATURES | EXTERIOR



FRONT DOOR PAINT  
COLOR



FRONT DOOR STYLE



FRONT DOOR  
HARDWARE



GARAGE COACH LIGHTS

*\*\*The images shown are conceptual in nature and the perception of color, texture, and pattern may be different when viewed in person. Options subject to change without notice.\*\**

