

# SHOWCASE HOME | Julia

Street Address: 6991 SE Haven Lane

A/C Sq. Ft.: 1,968

Bedrooms: 2

Bathrooms: 2

Move-In Date: See Listing

# KOLTER HOMES®



ELEVATION: C



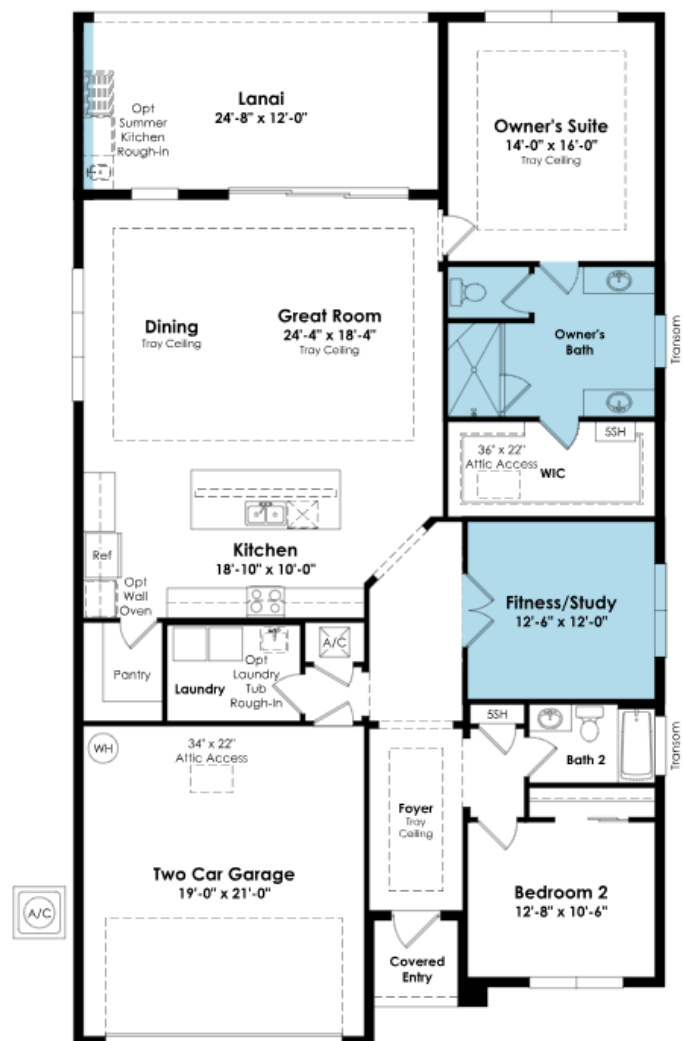
HOMESITE: 078

Exterior Color Package:



Prices, homesites, amenities, home designs, square footage and other information subject to errors, changes, omissions, deletions, availability, prior sales and withdrawal at any time without notice. Square footage numbers are approximate and may vary depending on the standard measurement used. Photos and/or drawings of homes may show upgraded landscaping and may not represent the lowest priced homes in the community. All renderings and floorplans in these materials are an artist's conceptual drawings and will vary from the actual plans and homes as built. CRC057817/CGC1514916

KOLTERHOMES®



## SHOWCASE HOME: Julia

**\*\*New Construction\*\*** This brand-new Julia floorplan, built by Kolter Homes, is situated on a North-East facing homesite with a preserve view, within the gated community of Cove Royale. This home offers 2 bedrooms, 2 bathrooms, and a 2-car garage. This Julia also has double doors added to the flex space to create a private office or exercise room. The lanai has an added 5' privacy wall with gas, electric and water connections for a future outdoor summer kitchen. The owner's bathroom has been upgraded to include separate vanities, and the house includes a tankless gas water heater.

## SHOWCASE HOME FEATURE HIGHLIGHTS

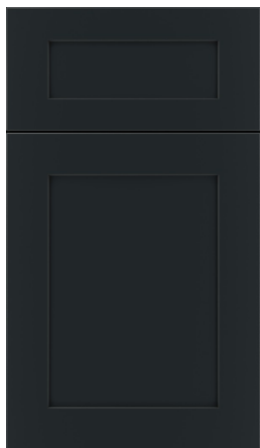
### KITCHEN DETAILS

- UNDER KITCHEN CABINET LIGHTING
- GE PROFILE KITCHEN APPLIANCES
- UPGRADED DESIGNER WALL MOUNT HOOD
- CABINET CROWN MOLDING
- 2<sup>ND</sup> TIER CABINETS
- 24" DEPTH CABINET ABOVE FRIDGE W/1 PANEL ON SIDE
- CABINET PANEL PACKAGE
- DOUBLE TRASH PULL OUT
- 3" ISLAND EDGE
- QUARTZ COUNTERTOPS

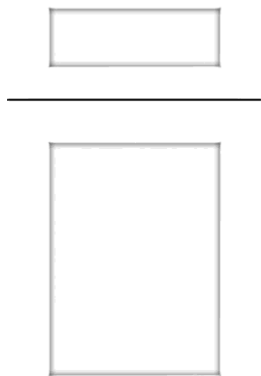
### DESIGNER FEATURES

- 5' PRIVACY WALL WITH PRE-PLUMBING FOR SUMMER KITCHEN
- STUDY ILO FLEX ROOM W/DOUBLE DOORS
- OWNER'S BATHROOM W/SEPARATE VANITIES
- LAUNDRY ROOM WITH UPPER AND BASE CABINETS
- REVWOOD LAMINATE FLOORING IN MAIN LIVING AREA

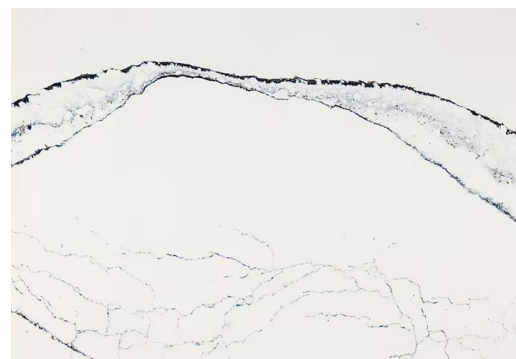
## SHOWCASE HOME DESIGNER FEATURES | KITCHEN



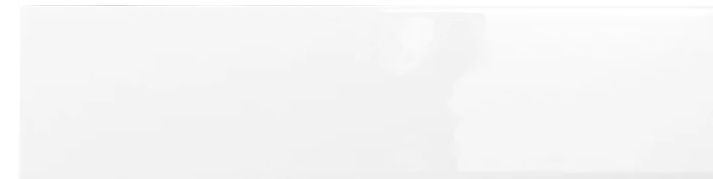
**KITCHEN CABINETS – KTICHENCRAFT  
SALEM (ISLAND-STARLESS; PERIMETER-  
WHITECAP)**



**HARDWARE –  
625-160-SN**



**COUNTERTOPS – CAMBRIA  
QUARTZ PORTRUSH**



**BACKSPLASH – EMSER  
TILE CATCH ICE GL 4x16**

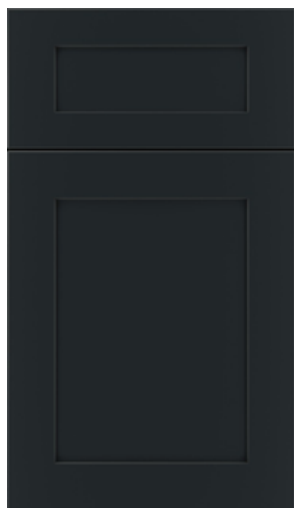


**KITCHEN FAUCET – MOEN ALIGN  
W/SPRING PULLDOWN SPOT RESISTANT  
STAINLESS**



**FLOORING – DRIFTWOOD  
COLLECTIVE LAMINATE  
GULF SAND**

## SHOWCASE HOME DESIGNER FEATURES | OWNER'S BATHROOM



**BATHROOM CABINETS –  
KITCHENCRAFT SALEM STARLESS**



**HARDWARE –  
625-160-PC**



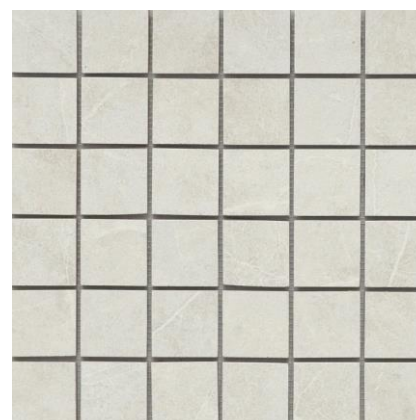
**COUNTERTOP – CAMBRIA  
QUARTZ SANDGATE**



**SHOWER WALL – EMSER TILE  
STERLINA II SILVER PL 12x24**



**BATHROOM FAUCET – MEON  
DOUX 8" CHROME**



**SHOWER FLOOR – EMSER  
TILE STERLINA II SILVER 2x2**



**FLOORING – EMSER TILE  
STERLINA II SILVER MT 24x24**



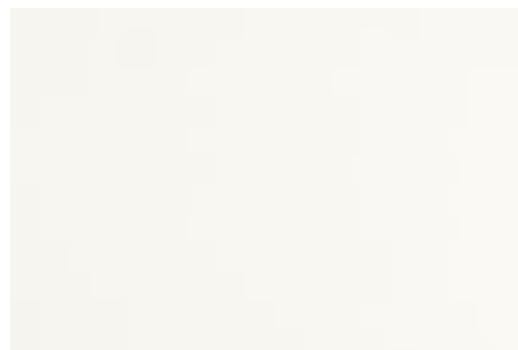
## SHOWCASE HOME DESIGNER FEATURES | BATHROOM 2



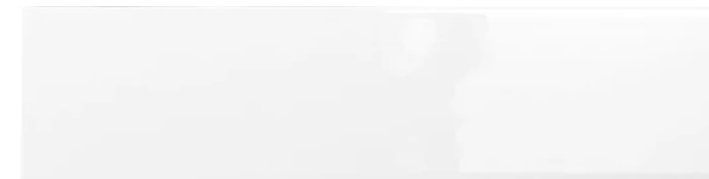
**BATHROOM CABINETS –  
KITCHENCRAFT CONTEMPRA VERTICAL  
DRIFTWOOD**



**HARDWARE –  
625-160-PC**



**COUNTERTOPS – DAL TILE  
QUARTZ MORNING FROST**



**TUB WALL - EMSER TILE  
CATCH ICE GL 4x16**



**BATHROOM FAUCET –  
MOEN DOUX SL CHROME**



**FLOORING – EMSER TILE POTENZA  
IVORY 12x24**